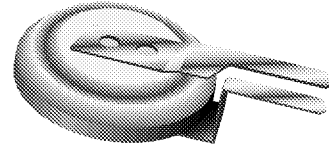


### Electric Double Layer Capacitors (Gold Capacitor)

Series: EL

Type: E



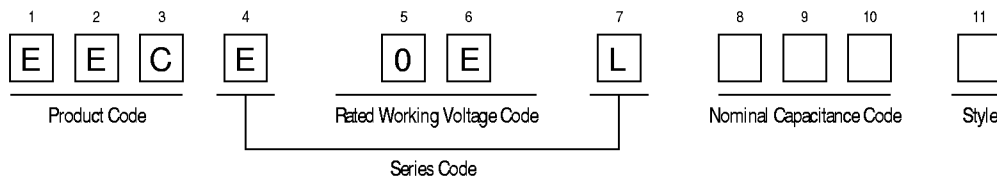
#### ■ Features

- New product ø6.8mm added
- Same shape as coin-type battery
- Quicker charge is available than secondary battery
- Flexible mounting is available
- Various style of terminals are available

#### ■ Recommended Applications

- Memory card (power supply to hold memory)
- Portable CDs, pagers, cameras (power supply for memory backup while exchanging battery)
- Solar-powered calculators, solar-powered watches (second power supply of solar battery)

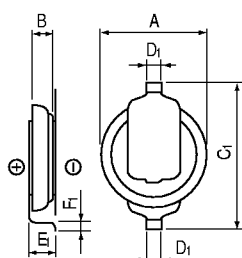
#### ■ Explanation of Part Numbers



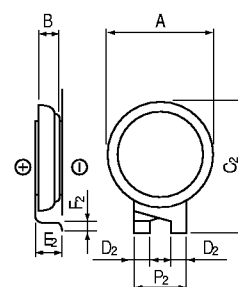
#### ■ Specifications

Operating temperature range	-25 to +70°C	
Rated working voltage	2.5 V.DC	
Nominal capacitance range	0.1 to 2.0 F	
Capacitance tolerance	+80% / -20% (+20°C)	
Characteristics at low temperature	Capacitance change	±30% of initial measured value at +20°C (-25 to +70°C)
	Internal resistance	≤5 times of initial measured value at +20°C (at -25°C)
Endurance	After 1,000 hours application of 2.5 V. DC at +70°C, the capacitor shall meet the following limits:	
	Capacitance change	±30% of initial measured value
	Internal resistance	≤4 times of initial specified value
Shelf life	After 1,000 hours storage at +70°C without load, the capacitor shall meet the specified limits for "Endurance."	
Moisture resistance	After 500 hours storage at +55°C, 90 to 95% R.H., the capacitor shall meet the specified limits for "Endurance."	

■ Dimensions in mm (not to scale)



Terminal: A



Terminal: R

Terminal: A

Part No.	A <sub>-0.3</sub> <sup>0</sup>	B <sub>-0.2</sub> <sup>0</sup>	C <sub>1</sub> ±0.5	D <sub>1</sub> ±0.1	E <sub>1</sub> max.	F <sub>1</sub> ±0.2
EECE0EL104A	6.8	1.4	12.0	0.5	1.8	1.8
EECE0EL334A	9.5	2.1	15.5	2.0	2.9	2.0
EECE0EL474A	11.0	2.0	17.0	2.0	2.8	2.0
EECE0EL684A	20.0	1.6	26.0	2.0	2.5	2.0
EECE0EL205A	18.5	2.2	24.5	2.0	3.0	2.0

Terminal: B

Part No.	A <sub>-0.3</sub> <sup>0</sup>	B <sub>-0.2</sub> <sup>0</sup>	C <sub>2</sub> ±0.5	D <sub>2</sub> ±0.1	E <sub>2</sub> max.	F <sub>2</sub> ±0.2	F <sub>2</sub> ±0.2
EECE0EL104A	6.8	1.4	10.0	0.5	1.8	1.8	2.0
EECE0EL334A	9.5	2.1	13.5	1.5	2.9	2.0	4.5
EECE0EL474A	11.0	2.0	15.0	1.5	2.8	2.0	5.5
EECE0EL684A	20.0	1.6	24.0	1.5	2.5	2.0	5.5
EECE0EL205A	18.5	2.2	22.5	1.5	3.0	2.0	5.5

■ Standard Products

Rated Working Voltage (V. DC)	Capacitance (F)	Part Number	Capacitance Range (F)	Internal Resistance (Ω) at 1 kHz
2.5	0.10	EECE0EL104*	0.08 to 0.18	≤ 50
	0.33	EECE0EL334*	0.26 to 0.59	≤ 40
	0.47	EECE0EL474*	0.38 to 0.85	≤ 40
	0.68	EECE0EL684*	0.54 to 1.22	≤ 10
	2.0	EECE0EL205*	1.6 to 3.6	≤ 15