

field effect transistors

160

NOTE: For Package Sizes see Pages 167 -

AMPLIFIERS VHF/UHF J FET/N-CHANNEL, SINGLE

TYPE	PACKAGE	*BV _{GSS} Volts Min.	I _{GSS} nA Max.	I _{DSS} mA		y _{fs} μmho Min.	V _P Volts Max.	C _{iss} pf Max.	C _{rss} pf Max.	C _{oss} pf Max.	G _P dB Min.	NF in db Max.
				Min.	Max.							
2N3821	TO-72	50	0.1	0.5	2.5	1500 ⁽¹⁾	4	6	3			
2N3822	TO-72	50	0.1	2	10	3000 ⁽¹⁾	6	6	3			
2N3823	†TO-72	30	0.5	4	20	3200 ⁽²⁾	8	6	2			2.5 @ 100 MHz
2N4223	†TO-72	30	0.25	3	18	2700 ⁽²⁾	8	6	2		10 @ 200 MHz	5 @ 200 MHz
2N4224	†TO-72	30	0.5	2	20	1700 ⁽²⁾	8	6	2			
2N4416	TO-72	30	0.1	5	15	4000 ⁽³⁾	6	4	0.8	2	10 @ 400 MHz	4 @ 400 MHz
2N4416A	TO-72	35	0.1	5	15	4000 ⁽³⁾	6	4	0.8	2	10 @ 400 MHz	4 @ 400 MHz
2N4417	CC-3	30	0.1	5	15	4000 ⁽³⁾	6	3.5	0.8	1.3	10 @ 400 MHz	4 @ 400 MHz
2N5103	TO-72	25	0.1	1	8	2000	4	5	1			
2N5104	TO-72	25	0.1	2	6	3500	4	5	1			
2N5105	TO-72	25	0.1	5	15	5000	4	5	1			
KE4416	TO-106	30	0.1	5	15	4000 ⁽³⁾	6	4	0.8	2	10 @ 400 MHz	4 @ 400 MHz
UC734	TO-72	30	5	4	20	3000 ⁽²⁾	8	4	0.8			
UC734E	TO-106	30	5	4	20	3000 ⁽²⁾	8	4.5	1.0			

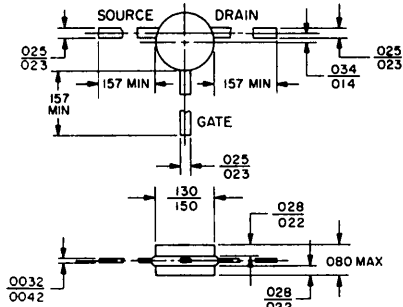
(1) at 100 MHz (2) at 200 MHz (3) at 400 MHz †Available in Solitron Micro-Package CC3

SWITCHING JUNCTION FET/N-CHANNEL, SINGLE

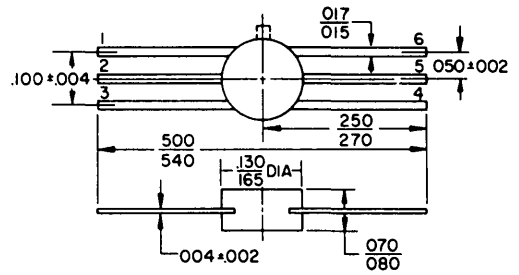
TYPE	PACKAGE	BV _{GSS} Min. Volts	I _{GSS} *I _{DGO} Max. nA	I _{D(off)} Max. nA	I _{DSS} mA		V _P Volts Max.	C _{iss} Max. pf	C _{rss} Max. pf	R _{on} Max. Ohms	t _{on} n Sec Max.	t _{off} n Sec Max.
					Min.	Max.						
2N3824	TO-72	50	0.1	0.1	—	—	8	6	3	250	—	—
2N3970	TO-18	40	0.25	0.25	50	150	10	25	6	30	20	30
2N3971	TO-18	40	0.25	0.25	25	75	5	25	6	60	30	60
2N3972	TO-18	40	0.25	0.25	5	30	3	25	6	100	80	100
2N4091	†TO-18	40	0.2	0.2	30	—	10	16	5	30	25	40
2N4092	†TO-18	40	0.2	0.2	15	—	7	16	5	50	35	60
2N4093	†TO-18	40	0.2	0.2	8	—	5	16	5	80	60	80
2N4391	†TO-18	40	0.1	0.1	50	150	10	14	3.5	30	20	35
2N4392	†TO-18	40	0.1	0.1	25	75	5	14	3.5	60	20	55
2N4393	†TO-18	40	0.1	0.1	5	30	3	14	3.5	100	20	80
2N4856	TO-18	40	0.25	0.25	50	—	10	18	8	25	9	25
2N4857	TO-18	40	0.25	0.25	20	100	6	18	8	40	10	50
2N4858	TO-18	40	0.25	0.25	8	80	4	18	8	60	20	100
2N4859	TO-18	30	0.25	0.25	50	—	10	18	8	25	9	25
2N4860	TO-18	30	0.25	0.25	20	100	6	18	8	40	10	50
2N4861	TO-18	30	0.25	0.25	8	80	4	18	8	60	20	100
UC155	TO-72	30	0.1	0.1	10	—	10	4	1	125	—	—
UC155E	TO-106	30	0.1	0.1	10	—	10	4	1	125	—	—
UC155W	CC-3	30	0.1	0.1	10	—	10	3.5	1	125	—	—
UC201	†TO-72	50	0.1	0.1	15	—	8	7	4	125	—	—
UC250	TO-18	30	1	1	50	150	10	25	6	30	—	—
UC251	TO-18	30	1	1	7.5	75	6	25	6	75	—	—

outline drawings

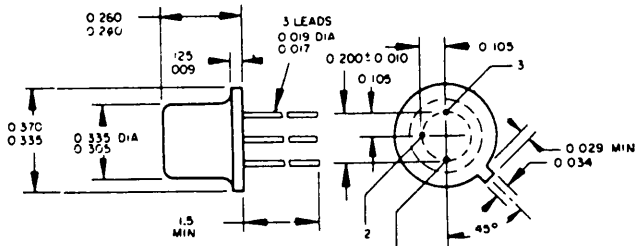
CC3



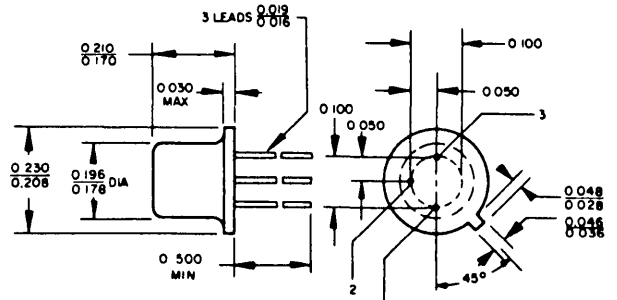
CC6



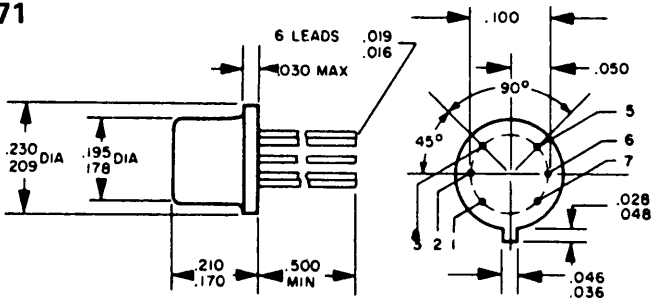
T05



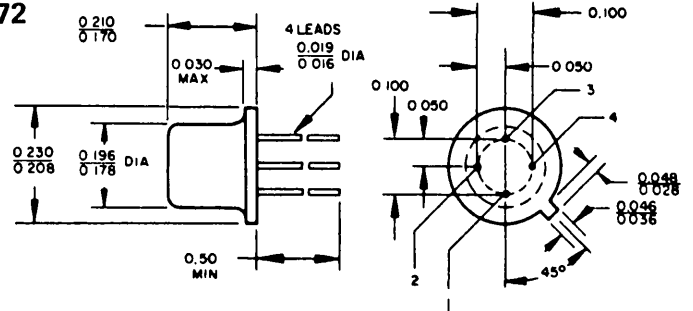
T018



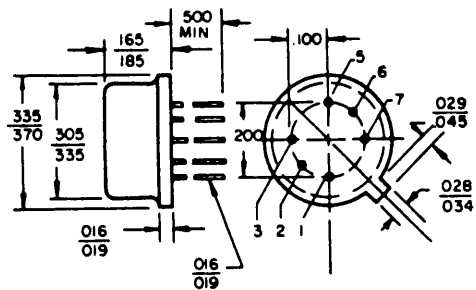
T071



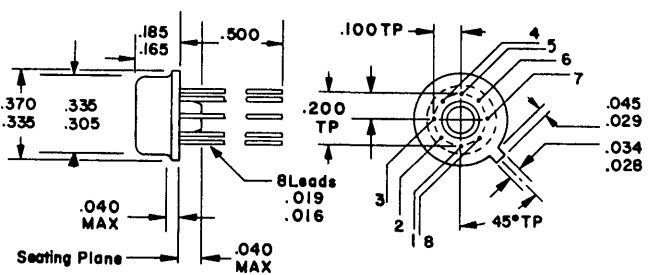
T072



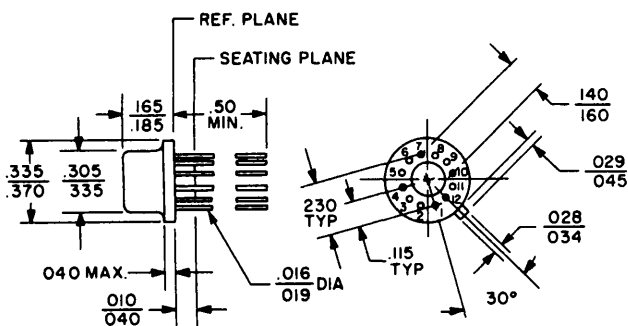
T078



T099



T0101



T0106

