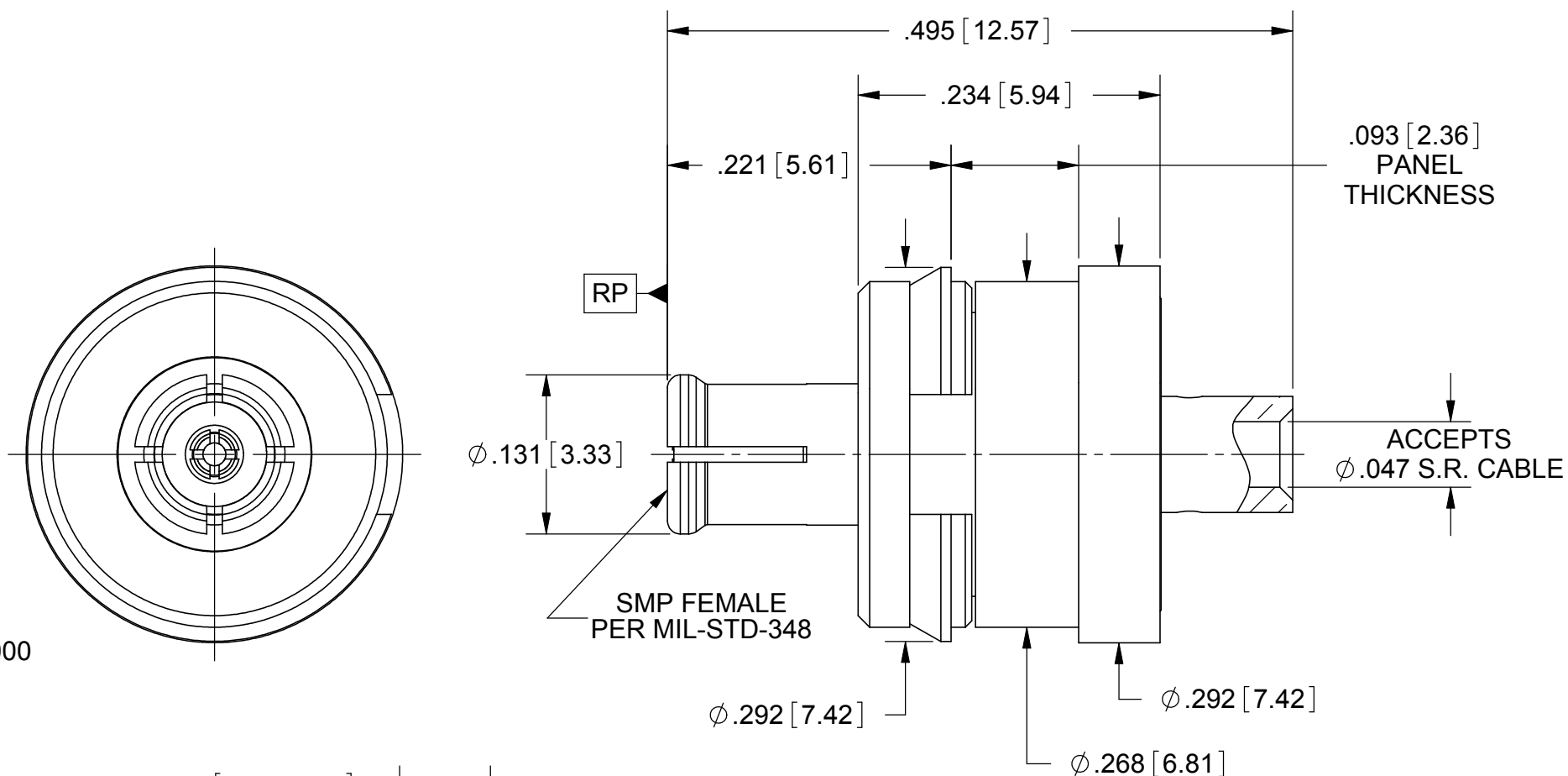


PRODUCT DATA DRAWING

REVISION HISTORY			
REV	DESCRIPTION	DATE	APPROVED
-	DCN 37911	12/10	PJS



MATERIALS:

BODIES, CONTACT & SPRING CLIP: BERYLLIUM COPPER PER ASTM B196
 SLEEVE & INSERT: STAINLESS STEEL PER AMS 5640, ALLOY No. UNS S30300, TYPE 1
 BUSHING: BRASS PER ASTM B16, ALLOY UNS No. C36000
 SPRING: STAINLESS STEEL PER ASTM A313
 INSULATOR: PTFE PER ASTM D1710
 DIELECTRIC SPACER: TORLON 4203
 HEAT SHRINK TUBING: AMS-DTL-23053 (NOT SHOWN)

FINISHES:

BODIES, CONTACT & SPRING CLIP: GOLD PER ASTM B488, TYPE II GRADE C, CLASS 1.27, OVER NICKEL PER AMS-QQ-N-290, CLASS 1
 BUSHING: NICKEL PER AMS-QQ-N-290, CLASS 2
 SLEEVE, INSERT & SPRING: PASSIVATED PER AMS 2700

ELECTRICAL:

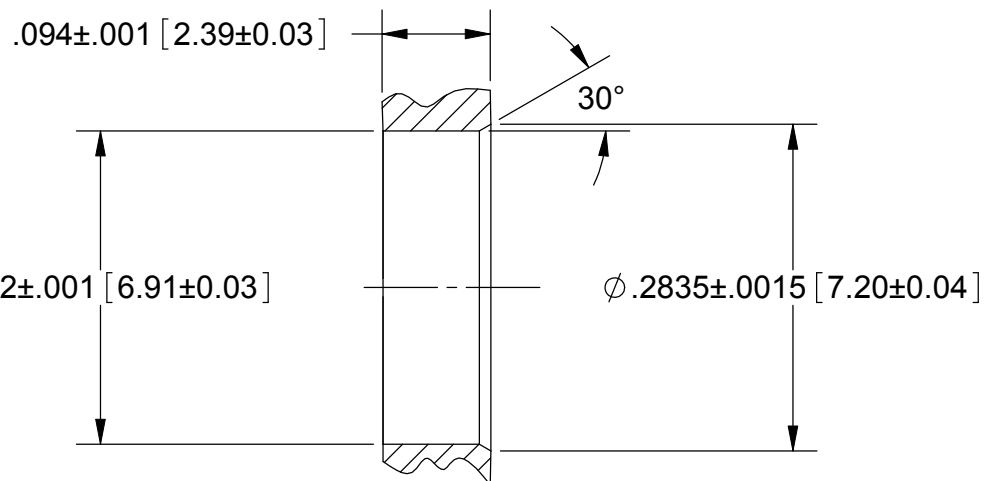
IMPEDANCE: 50 OHMS
 FREQ. RANGE: DC TO 40.0 GHZ
 VSWR: 1.15:1 DC TO 18.0 GHZ.
 1.25:1 DC TO 26.5 GHZ.
 D.W.V.: 500 VRMS
 INSULATION RES.: 5,000 MEGOHMS MINIMUM

FLOAT:

AXIAL FLOAT: .040 INCH
 RADIAL FLOAT: .020 INCH

SPRING FORCE:

SPRING RATE: 39 LBS/INCH NOM.
 PRE-LOAD: 0.81 LBS NOM.
 .035" COMPRESSION: 2.15 LBS NOM.
 .125" COMPRESSION: 5.6 LBS NOM.



RECOMMENDED MOUNTING HOLE

MATERIAL: SEE NOTES	DIMENSIONS ARE IN INCHES TOLERANCES: FRACTIONAL: ±1/64 ANGULAR: X° ±1'0" X'X' ±15'	UNLESS OTHERWISE SPECIFIED 1) ALL DIMENSIONS ARE IN INCHES (MILLIMETERS) 2) ALL DIMENSIONS ARE AFTER PLATING 3) BREAK CORNERS & EDGES .005 R. MAX. 4) CHAM. 1ST & LAST THREADS. 5) SURFACE ROUGHNESS 63-MIL-STD-10. 6) DIA. 'S ON COMMON CENTERS TO BE CONCENTRIC WITHIN .005 T.I.R. 7) REMOVE ALL BURRS	SV Microwave, Inc. 2400 Centrepark West Drive, Suite 100 West Palm Beach, FL 33409
FINISH: SEE NOTES	DECIMAL: X ±.030 .XX ±.010 .XXX ±.005	INTERPRET DIMENSIONS AND TOLERANCES PER ASME Y14.5M - 1994	TITLE: SMP FEMALE FLOAT MT. FOR S.R. Ø.047 CABLE, Ø.093" PANEL THK.
SURFACE AREA: N/A	THIRD ANGLE PROJECTION	DRAWN: FED 12/02/10 CHECKED: PJS 12/02/10 APPROVED: PJS 12/02/10	SIZE: B CAGE CODE: 95077 DWG. NO. 1221-60008
PROPRIETARY THE INFORMATION CONTAINED IN THIS DRAWING IS THE SOLE PROPERTY OF SV MICROWAVE, INC. ANY REPRODUCTION IN PART OR AS A WHOLE WITHOUT THE WRITTEN PERMISSION OF SV MICROWAVE, INC IS PROHIBITED.			SCALE: 8:1 SHEET 1 OF 1