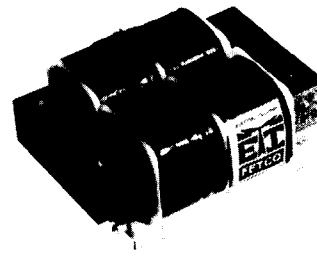


**POWER TRANSFORMERS  
LOW PROFILE /  
PRINTED CIRCUIT MOUNT**

**Features:**

- Dual primaries: 115/230V, 50/60 Hz
- Semi-toroid construction reduces magnetic radiation & noise
- Class "B" insulation - 130°C
- Molded - in P.C. terminals: Precision spaced
- Split bobbin: Side by side windings - no static shield required
- High isolation: For low leakage applications
- Four sizes to choose from:
  - 2.5VA (0.650") for 0.75" card spacing
  - 6.0VA (0.850") for 1.00" card spacing
  - 12.VA (1.065") for 1.25" card spacing
  - 24.VA (1.250") for 1.87" card spacing



**Specifications:**

**ELECTRICAL**

OUTPUT POWER RATINGS: 2.5VA, 6.0VA, 12.0VA, & 24.0VA

OUTPUT VOLTAGE: 5.0V, 6.3V, 8.0V, 10.0V, 12.0V, 15.0V, 17.0V, 20.0V, 24.0V, 28.0V, 30.0V, 34.0V, 40.0V, 44.0V, 56.0V, 60.0V, 88.0V, 115.0V, 120.0V, & 230.0V

DIELECTRIC STRENGTH: 2,000 VRMS

TEMPERATURE CLASS: Insulation class B, 130°C

**MECHANICAL**

BOBBIN: Split type, Nylon

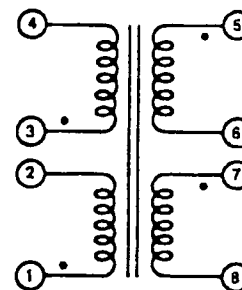
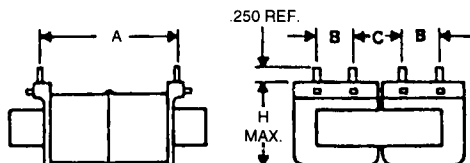
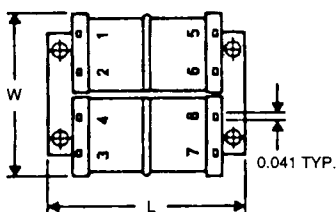
TERMINALS: Brass, solder coated

RATED: 130°C

WEIGHT: (See table)

**DIMENSIONS**

NOTE: WHITE DOT INDICATES PIN NO. 1 FOR ORIENTATION



PRIMARIES  
115/230V  
50/60 Hz

• INDICATES LIKE POLARITY



## POWER TRANSFORMER - LOW PROFILE / PRINTED CIRCUIT MOUNT STANDARD CONFIGURATION AND ELECTRICAL SPECIFICATIONS @ 25°C

FETCO TYPE	POWER RATING (VA)	SECONDARY		DIMENSIONS (Inches)						WEIGHT Oz.
		SERIES	PARALLEL	H	W	L	A	B	C	
FPCL	2.5	10.0V CT @ 0.25A	5.0V @ 0.5A	0.650	1.562	1.875	1.600	0.375	0.375	5
		12.6V CT @ 0.2A	6.3V @ 0.4A							
		16.0V CT @ 0.15A	8.0V @ 0.3A							
		20.0V CT @ 0.125A	10.0V @ 0.25A							
		24.0V CT @ 0.1A	12.0V @ 0.2A							
		30.0V CT @ 0.008A	15.0V @ 0.16A							
		34.0V CT @ 0.075A	17.0V @ 0.15A							
		40.0V CT @ 0.06A	20.0V @ 0.12A							
		56.0V CT @ 0.045A	28.0V @ 0.09A							
		88.0V CT @ 0.028A	44.0V @ 0.056A							
		120.0V CT @ 0.02A	60.0V @ 0.04A							
		230.0V CT @ 0.01A	115.0V @ 0.02A							
		FPCL	6.0							
12.6V CT @ 0.475A	6.3V @ 0.95A									
16.0V CT @ 0.375A	8.0V @ 0.75A									
20.0V CT @ 0.3A	10.0V @ 0.6A									
24.0V CT @ 0.25A	12.0V @ 0.5A									
30.0V CT @ 0.2A	15.0V @ 0.4A									
34.0V CT @ 0.17A	17.0V @ 0.34A									
40.0V CT @ 0.15A	20.0V @ 0.3A									
56.0V CT @ 0.1A	28.0V @ 0.2A									
88.0V CT @ 0.065A	44.0V @ 0.13A									
120.0V CT @ 0.05A	60.0V @ 0.1A									
230.0V CT @ 0.025A	115.0V @ 0.05A									
FPCL	12.0			10.0V CT @ 1.2A	5.0V @ 2.4A	1.062	2.000	2.500	2.000	0.500
		12.6V CT @ 0.95A	6.3V @ 1.9A							
		16.0V CT @ 0.75A	8.0V @ 1.5A							
		20.0V CT @ 0.6A	10.0V @ 1.2A							
		24.0V CT @ 0.5A	12.0V @ 1.0A							
		30.0V CT @ 0.4A	15.0V @ 0.8A							
		34.0V CT @ 0.34A	17.0V @ 0.68A							
		40.0V CT @ 0.3A	20.0V @ 0.6A							
		56.0V CT @ 0.2A	28.0V @ 0.4A							
		88.0V CT @ 0.13A	44.0V @ 0.26A							
		120.0V CT @ 0.1A	60.0V @ 0.2A							
		230.0V CT @ 0.05A	115.0V @ 0.1A							
		FPCL	24.0	10.0V CT @ 2.4A	5.0V @ 4.8A					
12.6V CT @ 1.9A	6.3V @ 3.8A									
16.0V CT @ 1.5A	8.0V @ 3.0A									
20.0V CT @ 1.2A	10.0V @ 2.4A									
24.0V CT @ 1.0A	12.0V @ 2.0A									
30.0V CT @ 0.8A	15.0V @ 1.6A									
34.0V CT @ 0.68A	17.0V @ 1.36A									
40.0V CT @ 0.6A	20.0V @ 1.2A									
56.0V CT @ 0.4A	28.0V @ 0.8A									
88.0V CT @ 0.26A	44.0V @ 0.52A									
120.0V CT @ 0.2A	60.0V @ 0.4A									
230.0V CT @ 0.1A	115.0V @ 0.2A									

CT = Center Tap

### CONNECTIONS

**SERIES CONNECTION @ 230V:**  
 PRIMARY: Input 1 & 4  
           Connect 2 & 3  
 SECONDARY: Output 5 & 8  
               Connect 6 & 7

**PARRALLEL CONNECTION @ 115V:**  
 PRIMARY: Input 1 & 2  
           Connect 1 & 3, 2 & 4  
 SECONDARY: Output 5 & 6  
               Connect 5 & 7, 6 & 8

### FETCO ORDERING INFORMATION

**FPCL - 12 - 24 - S**  
**1    2    3    4**

1. FETCO type
2. Power rating (VA)
3. Voltage rating
4. Secondary connection used in specifying the voltage rating

Toll Free: 800/576-9579  
 Phone: 813/536-7861  
 Fax: 813/535-3508

