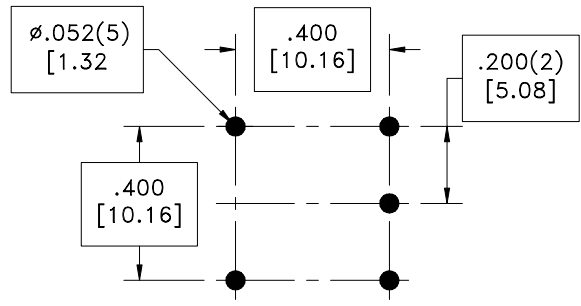
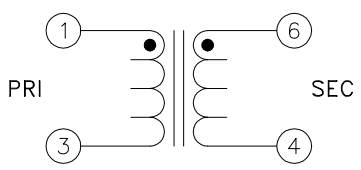
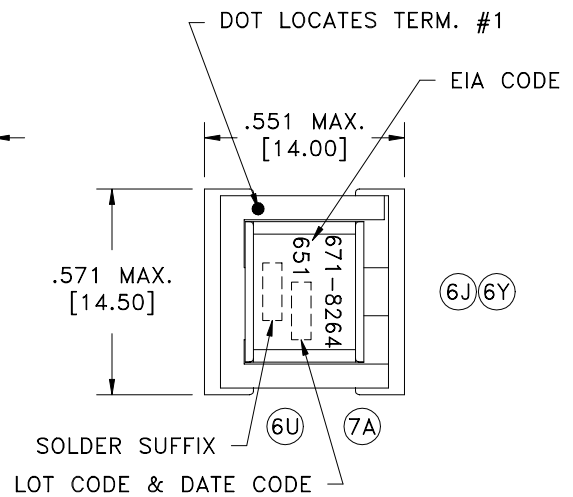
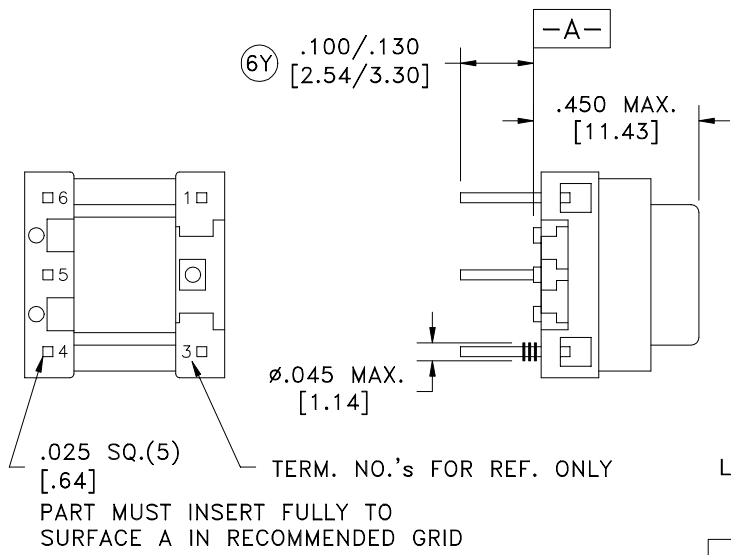


SOLDER SUFFIX	CUSTOMER TERMINAL	RoHS	LEAD(Pb)-FREE	(7A)
	Sn63%, Pb37%	No	No	
LF1	Sn96%, Ag4%	Yes	Yes	



(6Y) RECOMMENDED P.C. PATTERN, COMPONENT SIDE

**ELECTRICAL SPECIFICATIONS @ 25°C unless otherwise noted:**

IMPEDANCE:	Designed to reflect 600 ohms on the PRI with 442 ohm load on SEC.
LONGITUDINAL BALANCE:	60dB, 200 - 1000Hz; 40dB, 1000 - 4000Hz per FCC part 68.310.
(6E) D.C. RESISTANCE (@20°C):	1-3, 80 ohms ±10%. 6-4, 87 ohms ±10%.
FREQUENCY RESPONSE:	±0.25dB, 300 - 3500Hz.
INSERTION LOSS:	2.0dB max., 1kHz.
(6D)(6J) DIELECTRIC RATING:	1000VAC, 1 minute tested by applying 1250VAC for 1 second between PRI-SEC. Meets or exceeds requirements of: CAN/CSA-C22.2 No. 225 (M90); DOC's CS-03 (Issue 7); UL's UL1459, 2nd Ed. (1992) and FCC's Part 68 (58 FR 44907, Aug. 25, 1993).
(6Q) D.C. CURRENT:	None.
RETURN LOSS:	21.0dB min., 300Hz.
ECHO RETURN LOSS:	25.0dB min.
URNS RATIO:	(1-3):(6-4) = 1:1, ±2%.
TOTAL HARMONIC DISTORTION:	-76dB max., 600Hz, 10dBm (V.32bis).

(6K) AGENCY NUMBER	
UL	E99406
CSA	LR61218

**Midcom, Inc.**  
 Watertown, SD USA  
 Toll Free: 800-643-2661  
 Fax: 605-886-4486  
 This drawing is dual dimensioned.  
 Dimensions in brackets are in millimeters.

Unless otherwise specified:  
 Tolerances: Fractions: ±1/64  
 Angles: ±1° Decimals: ±.005 [1.13]  
 DRAWING TITLE  
**TRANSFORMER**  
 REVISIONS: SEE SHEET 1

**Midcom**  
 DRAWING NO. (7A) REV. 7A  
**671-8264/-LF1** 6/06  
 SCALE --- SHEET 2 OF 5

DWG# 671-8264/-LF1