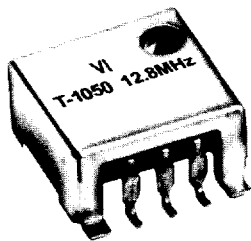


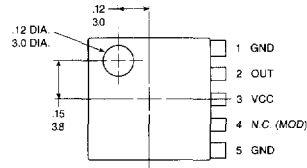
Miniature TCXOs

T-1050 Series



Features

- Low profile design
- 1.2 mA current
- 5.0 VDC and 3.3 VDC options
- Voltage tune option
- Low cost
- Many parts in stock

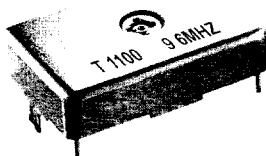


T-1050



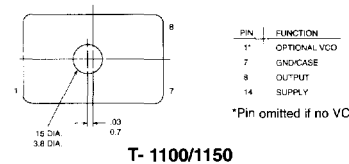
Note: dimensions in inches

T-1100 & T-1150 Series

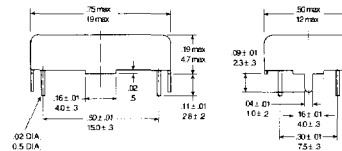


Features

- Low profile design
- Low current
- 5.0 VDC and 3.3 VDC options
- Voltage tune option
- Low cost
- Many parts in stock



T-1100/1150



Note: dimensions in inches

SPECIFICATIONS

T-1050-XXX = CLIPPED SINEWAVE SURFACE MOUNT*

T-1100-XXX = LS-TTL THRU HOLE

T-1150-XXX = CLIPPED SINEWAVE THRU HOLE

FREQUENCY RANGE	8.0 to 24.0 MHz						
STANDARD FREQUENCIES	9.6 MHz, 10 MHz, 12.8 MHz, 15.36 MHz						
STABILITY OPTIONS	<table border="0"> <tr> <td>1 = ±1.5 PPM</td> <td rowspan="3"> </td> <td rowspan="3">-30°C to +70°C relative to +25°C</td> </tr> <tr> <td>2 = ±2.5 PPM</td> </tr> <tr> <td>3 = ±3.5 PPM</td> </tr> </table>		1 = ±1.5 PPM		-30°C to +70°C relative to +25°C	2 = ±2.5 PPM	3 = ±3.5 PPM
1 = ±1.5 PPM		-30°C to +70°C relative to +25°C					
2 = ±2.5 PPM							
3 = ±3.5 PPM							
STABILITY VS. SUPPLY AGING MECHANICAL TRIM	<±0.3 PPM for a change in B+ of <±5% < 1.0 PPM/Year after 30 days at +40°C ±3.0 PPM Minimum, sufficient for 5 years aging						
STORAGE TEMPERATURE	-40°C to +80°C						
INPUT VOLTAGE	<table border="0"> <tr> <td>A =+5.0 VDC ±5%</td> </tr> <tr> <td>B =+3.0 VDC ±5%</td> </tr> </table>		A =+5.0 VDC ±5%	B =+3.0 VDC ±5%			
A =+5.0 VDC ±5%							
B =+3.0 VDC ±5%							

	T-1100	5.0 VDC	3.0 VDC	T-1050 T-1150	+5.0 VDC	+3.0 VDC
LOGIC "1"		4.5 V Min.	2.6 V Min.		1.0 V P-P	0.8 V P-P
LOGIC "0"		0.4 V Max.	0.4 V Max.		<1.2 mA	<1.0 mA
CURRENT LOAD		10 mA Max.	5 mA Max.		10 KΩ/10pf	10 KΩ/10pf
		2 TTL	2 TTL			

OPTIONAL VOLTAGE CONTROL

- 0 = NO VCO Option
- 1 = ±3.0 PPM Min. 2.5V ± 1.5V*
- 2 = ±6.0 PPM Min. 2.5V ± 1.5V*

* 3.0 VDC units' VC is +1.5V±1.0V. Option 2 is not available.
VCO Option is only available with ±2.5PPM vs TEMP.