

Adjustable Type Coils M Type Series

Coils, Filters

M5-S2

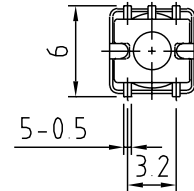
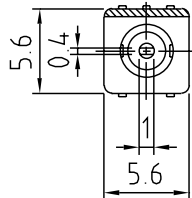


Specifications

- (1) 0.03~3 μ H
- (2) 10~200MHz
- (3) F: \pm 1.5%
L: \pm 3%
- (4) -
- (5) 40~70

Features

- SMD
- 2000pcs./Reel



M5-N1

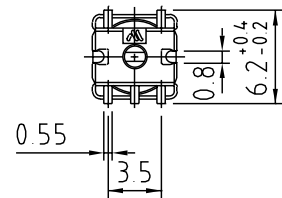
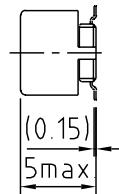
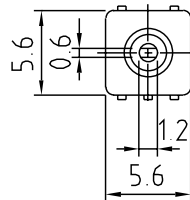


Specifications

- (1) 0.03~40 μ H
- (2) 3~200MHz
- (3) F: \pm 2%
L: \pm 4%
- (4) -
- (5) 30~80

Features

- SMD
- 1000pcs./Reel



M5-N

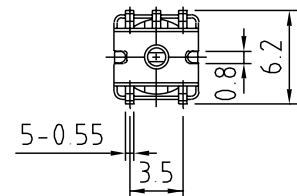
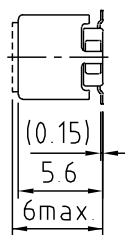
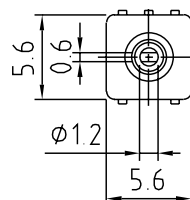


Specifications

- (1) 0.03~130 μ H
- (2) 3~200MHz
- (3) F: \pm 2%
L: \pm 4%
- (4) -
- (5) 30~80

Features

- SMD
- 1000pcs./Reel

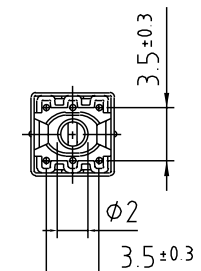
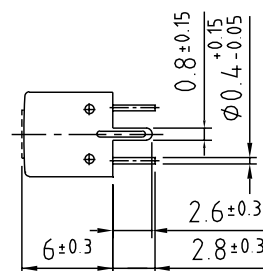
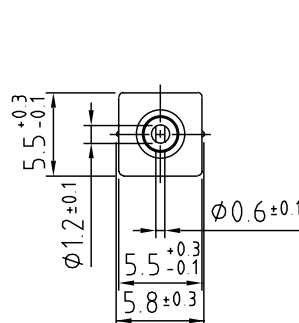


M5-H1



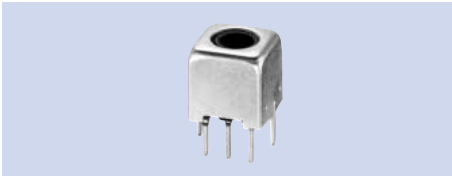
Specifications

- (1) 0.03~130 μ H
- (2) 10~200MHz
- (3) F: \pm 2%
L: \pm 4%
- (4) -
- (5) 30~80

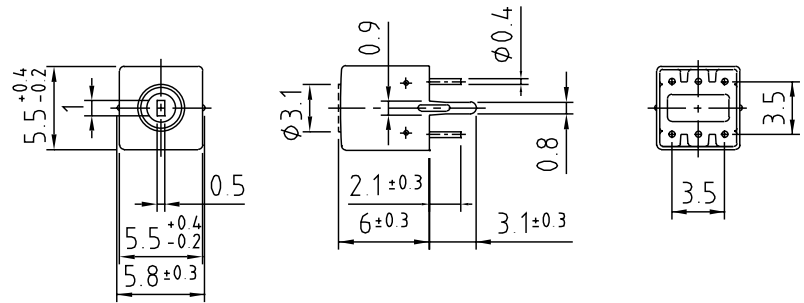


- (1) Inductance
- (2) Operational frequency
- (3) Variable range of F & L
- (4) Internal capacitance
- (5) Unloaded Q

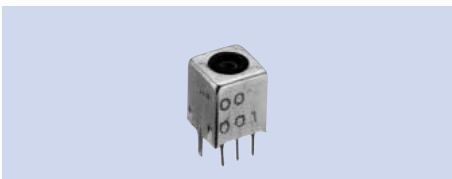
M5-D2



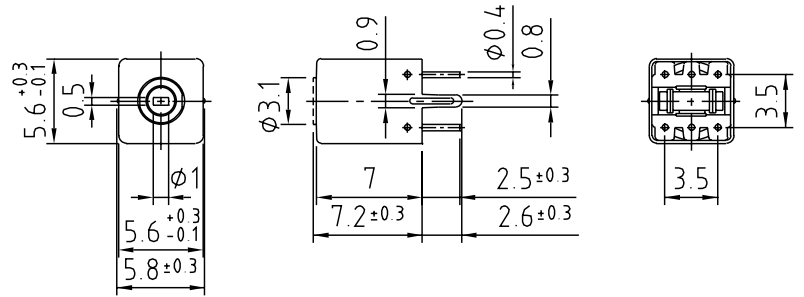
- Specifications**
 (1) 0.03~10 μ H
 (2) 10~200MHz
 (3) F: \pm 2%
 L: \pm 4%
 (4) -
 (5) 30~80



M5-F1



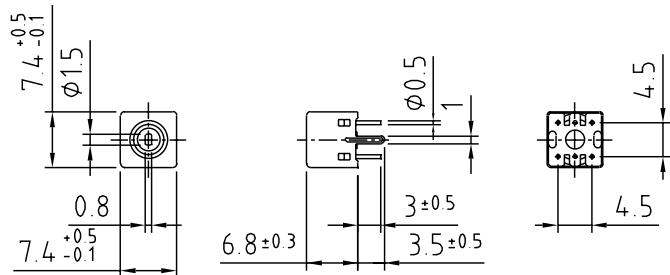
- Specifications**
 (1) 0.03~18 μ H
 (2) 10~200MHz
 (3) F: \pm 2%
 L: \pm 4%
 (4) 10~82pF
 (5) 30~80



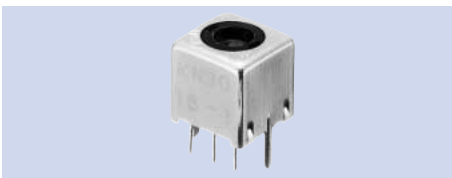
M7-C



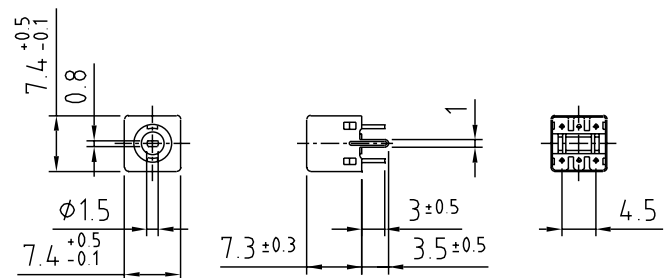
- Specifications**
 (1) 0.1~40 μ H
 (2) 10~120MHz
 (3) F: \pm 2%
 L: \pm 5%
 (4) -
 (5) 70~110



M7-B

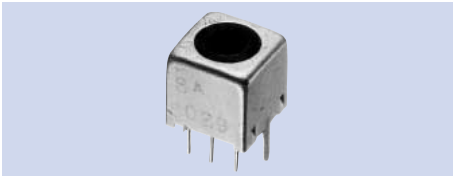


- Specifications**
 (1) 0.1~80 μ H
 (2) 10~120MHz
 (3) F: \pm 2%
 L: \pm 4%
 (4) 10~120pF
 (5) 40~100



- (1) Inductance
 (2) Operational frequency
 (3) Variable range of F & L
 (4) Internal capacitance
 (5) Unloaded Q

M7-F1

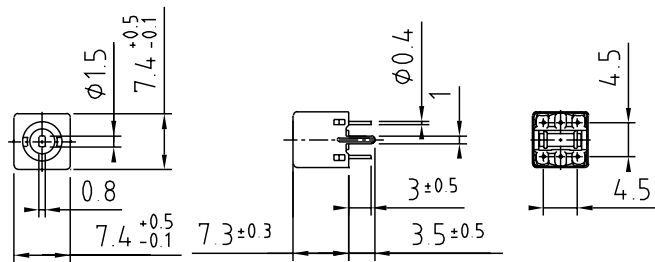


Specifications

- (1) 0.1~95 μ H
- (2) 10~200MHz
- (3) F: \pm 2%
L: \pm 4%
- (4) 10~200pF
- (5) 30~100

Features

FM-detector with Phase discriminator.

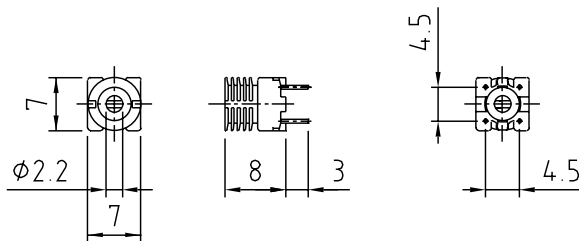


M7-V



Specifications

- (1) 0.1~40 μ H
- (2) 10~200MHz
- (3) F: \pm 3%
L: \pm 6%
- (4) -
- (5) 80~120



M7-A

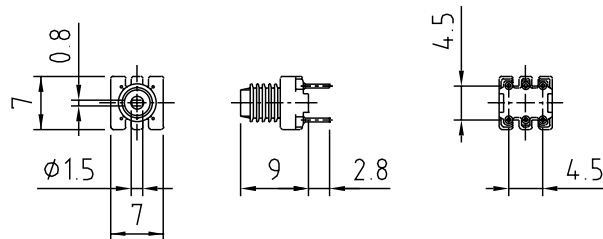


Specifications

- (1) 0.1~40 μ H
- (2) 10~200MHz
- (3) F: \pm 2%
L: \pm 5%
- (4) -
- (5) 40~100

Features

Can be soldered by a reflow furnace.

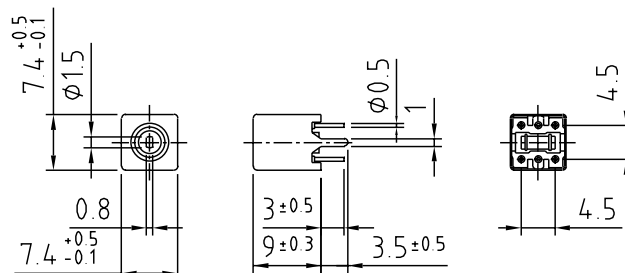


M7-T1



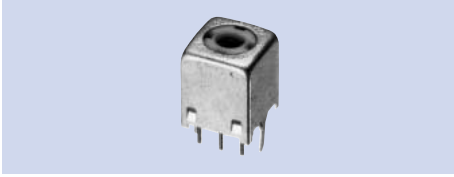
Specifications

- (1) 0.1~40 μ H
- (2) 10~200MHz
- (3) F: \pm 2%
L: \pm 5%
- (4) 10~120pF
- (5) 40~100



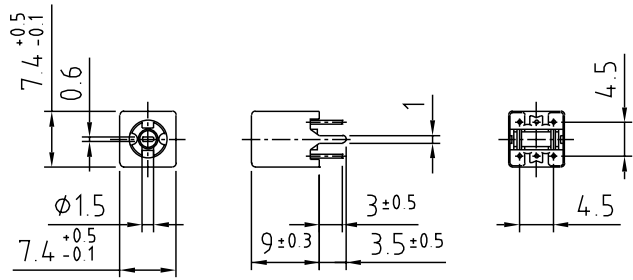
- (1) Inductance
- (2) Operational frequency
- (3) Variable range of F & L
- (4) Internal capacitance
- (5) Unloaded Q

M7-F



- Specifications**
 (1) 0.1 μ ~95 μ H
 (2) 10~200MHz
 (3) F: \pm 2%
 L: \pm 4%
 (4) 10~120pF
 (5) 30~100

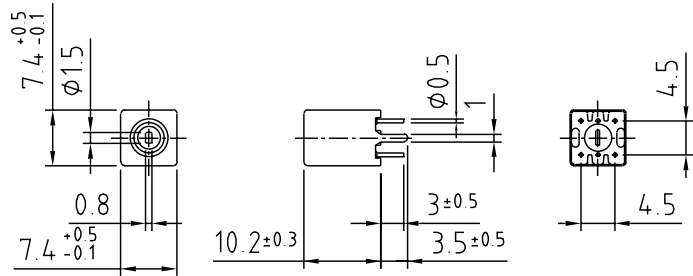
Features
 FM-detector with
 Phase discriminator.



M7-D3



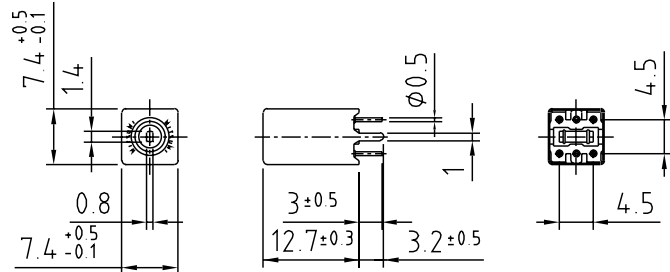
- Specifications**
 (1) 0.1~40 μ H
 (2) 10~200MHz
 (3) F: \pm 3%
 L: \pm 6%
 (4) -
 (5) 40~100



M7-M



- Specifications**
 (1) 0.1~150 μ H
 (2) 1~200MHz
 (3) F: \pm 3%
 L: \pm 6%
 (4) 10~120pF
 (5) 40~100



- (1) Inductance
 (2) Operational frequency
 (3) Variable range of F & L
 (4) Internal capacitance
 (5) Unloaded Q