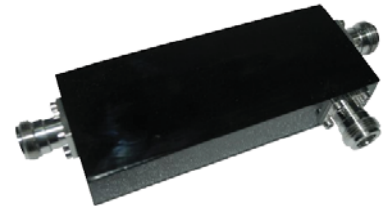


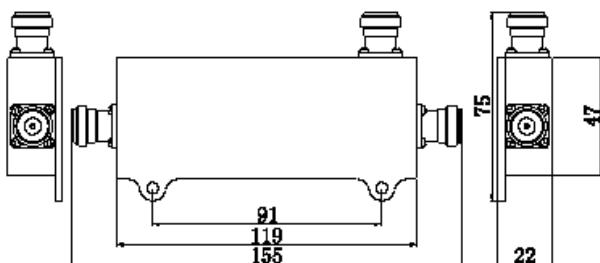
DC-xxHX-NF-CC

Directional Coupler | 698-4000 MHz | N Female

This model was previously released as ADC-xx-WBH-XP-NF-CC.



| | | |
|-------------------------------|----------------|------------------|
| Ordering Options | | 40 dB Coupler |
| Model Number (xx) | | DC-40HX-NF-CC |
| Electrical Characteristics | | |
| Frequency Range | | 698-4000 MHz |
| Coupling | | 40 dB |
| Coupling Tolerance | | ±1.5 dB |
| Insertion Loss | | ≤ 0.2 dB |
| Isolation | | ≥ 55 dB |
| VSWR | | ≤ 1.30 |
| Average Power (max) | | 200 W |
| Peak Power (max) | | 1 kW |
| PIM3 (2x43 dBm) | | ≤ -160 dBc |
| Impedance | | 50Ω |
| Mechanical Characteristics | | |
| Plating | Inner Contact | Silver |
| | Outer Trimetal | Trimetal |
| Connector | | N Female |
| Environmental Characteristics | | |
| Operating Temperature | | -35° C to +70° C |
| Relative Humidity | | Up to 95% |
| RoHs Compliant | | yes |
| Application | | Indoor / Outdoor |
| Ingress Protection | | IP65 |



Quoted performance parameters are provided to offer typical, peak or range values only and may vary as a result of normal testing, manufacturing and operational conditions. Extreme operational conditions and/or stress on structural supports is beyond our control. Such conditions may result in damage to this product. Improvements to products may be made without notice.