

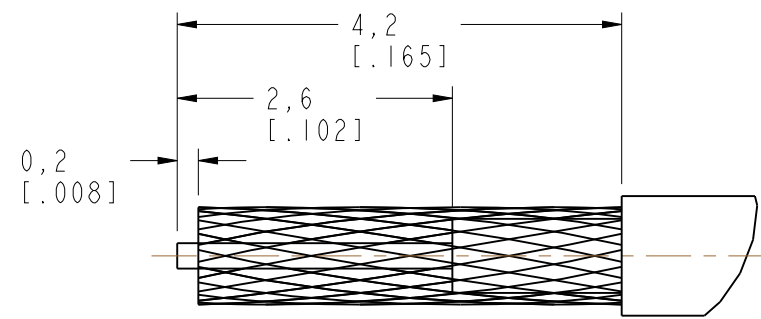
NOTES:

1. MATERIAL AND FINISH (PLATING THICKNESS IN MICRO-INCHES):
 BODY - BERYLLIUM COPPER, GOLD PLATING
 HOUSING - BRASS, GOLD PATING
 CONTACT - BRASS, GOLD PATING
 INSULATOR - PTFE, NATURAL
2. ELECTRICAL:
 A. IMPEDANCE: 50 OHM
 B. DIELECTRIC WITHSTANDING VOLTAGE: 1000 VRMS, MIN.
3. MECHANICAL:
 A. DURABILITY: 500 CYCLES MIN.
 B. TEMPERATURE RANG: -65°C TO +165°C
4. CRIMPED FERRULE
 HEX CRIMP SIZE .105"
5. CONTACT PIN TO SOLDER

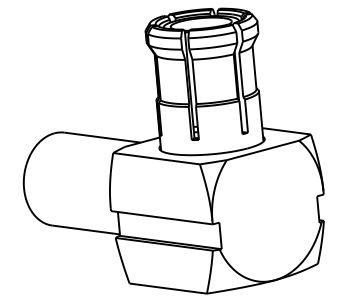
THIRD ANGLE PROJ.

REVISIONS

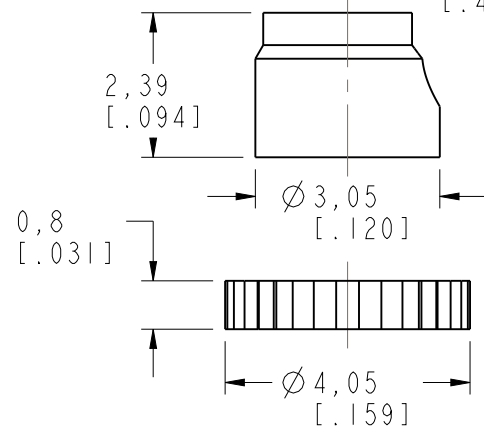
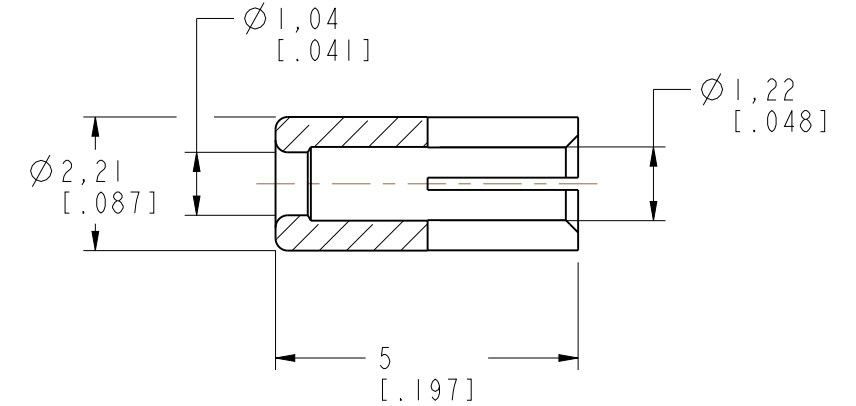
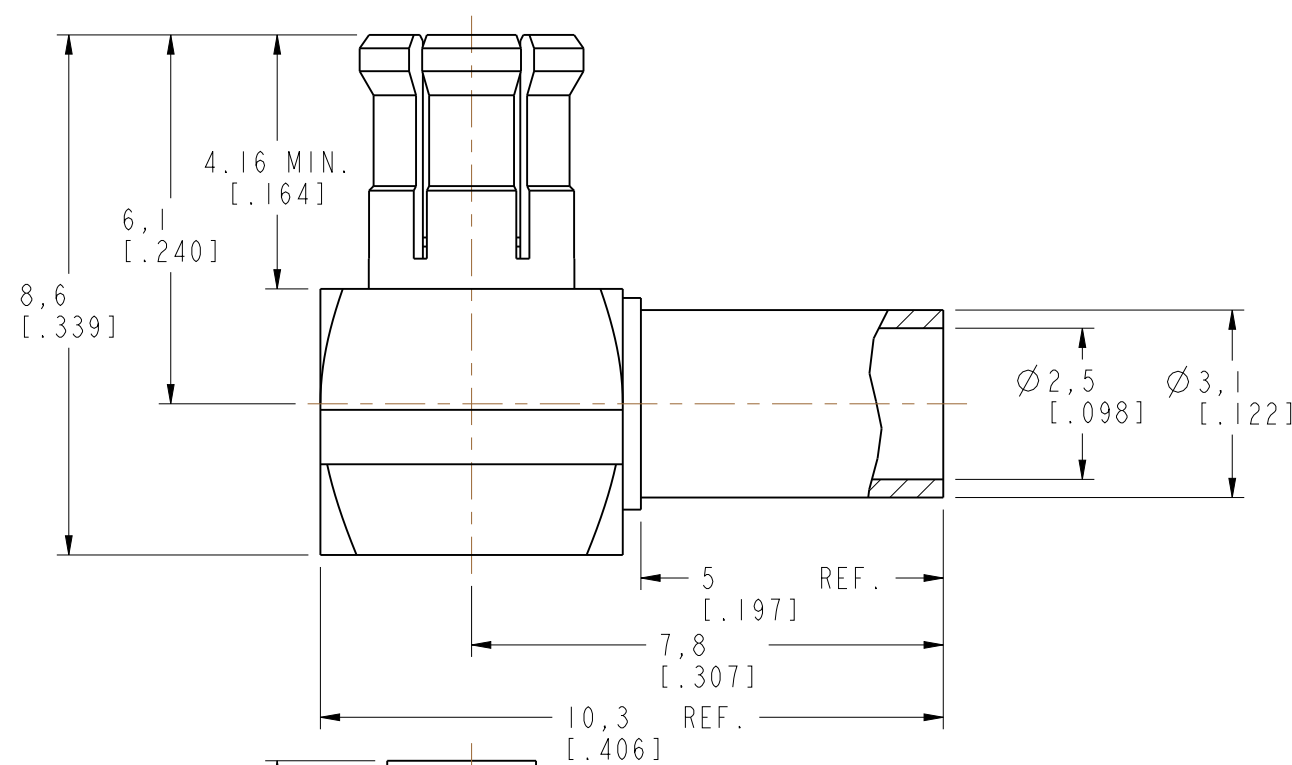
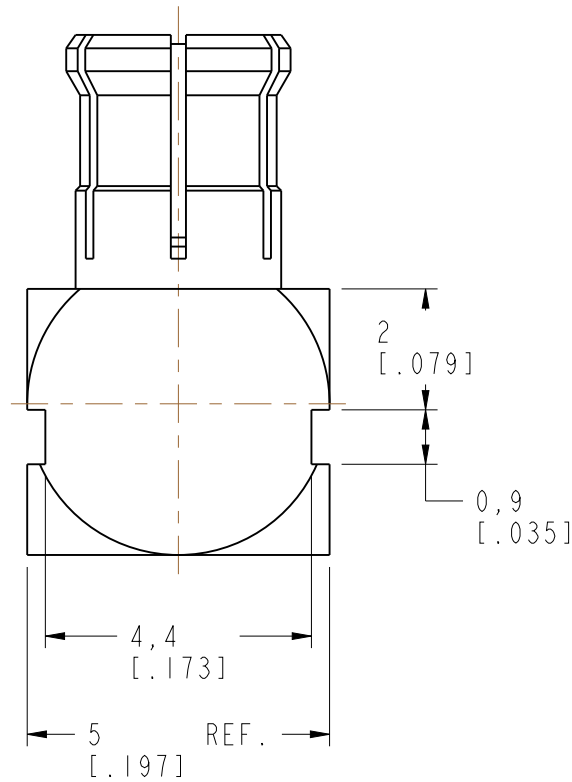
REV	DESCRIPTION	DATE	ECO	APPR
NC	INITIAL RELEASE	01-Jun-09	--	--
A	REDRAWN	09-Aug-17	4642	KEN



RECOMMENDED
CABLE STRIPPING DIMS



SCALE 4.000



CUSTOMER OUTLINE DRAWING

ALL OTHER SHEETS ARE FOR INTERNAL USE ONLY

UNLESS OTHERWISE SPECIFIED, DIMENSIONS ARE IN METRIC AND TOLERANCES ARE:
 <0.5mm ±0.05mm 0.5 - 6mm ±0.1mm 6 - 30mm ±0.2mm 30 - 120mm ±0.3mm ANGLES ±1°

NOTICE - These drawings, specifications, or other data (1) are, and remain the property of Amphenol corp. (2) must be returned upon request; and (3) are confidential and not to be disclosed to any person other than those to whom they are given by Amphenol Corp. the furnishing of these drawings, specifications, or other data by Amphenol Corp., or to any other person to anyone for any purpose is not to be regarded by implication or otherwise in any manner licensing, granting rights to permitting such holder or any other person to manufacture, use or sell any product, process or design, patented or otherwise, that may in any way be related to or disclosed by said drawings, specifications, or other data.

MATERIAL	DRAWN STAR	DATE 22-Jul-17	TITLE MCX R/A CRIMP PLUG (FOR 1.13MM CABLE)		Amphenol RF www.amphenolrf.com
REFERENCE AND CONFIGURATION LEVEL: In Work	ENGINEER	DATE	SCALE: 8.0:1.0	SHEET 2 OF 2	
FINISH	APPROVED K. CAPOZZI	DATE 09-Aug-17	DWG SIZE B	REV A	DRAWING NO. MCX1112A6-3GT30G-C113-50
					ITEM NO. 081112ABL63GE5F
					PART NO. 252196