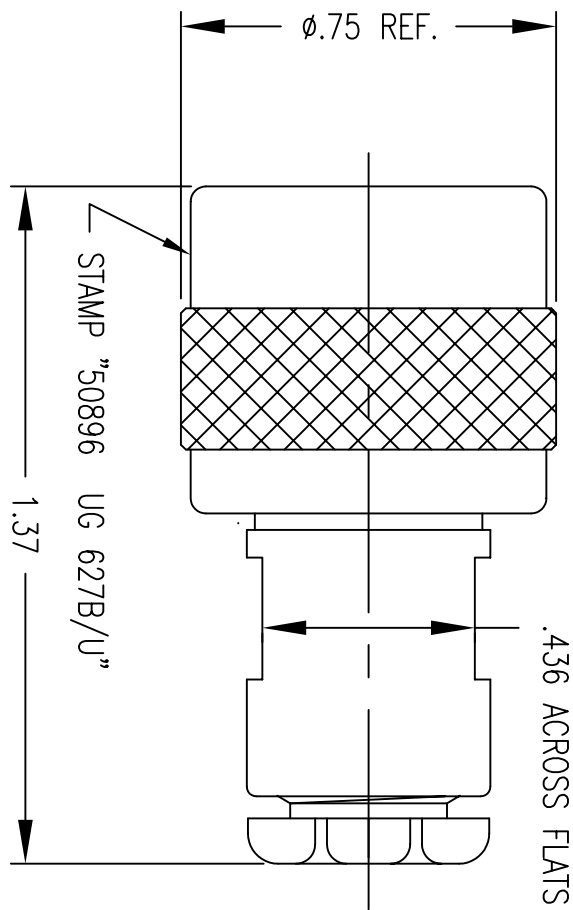
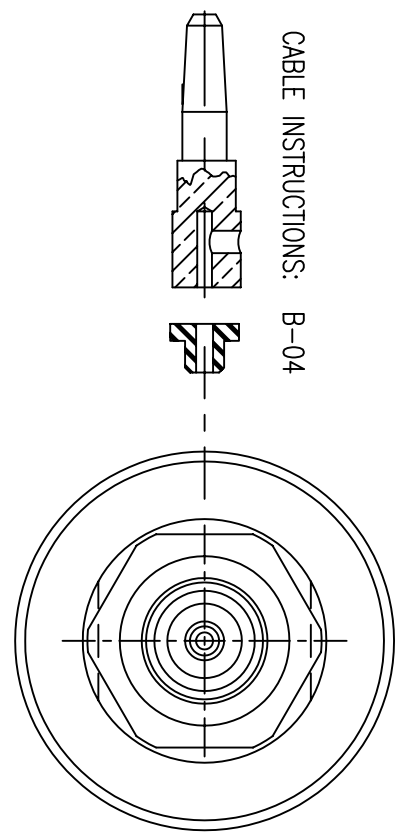


- 1.0 PERFORMANCE
- 1.1 FREQUENCY RANGE: DC-11GHz
- 1.2 VOLTAGE RATING: 1000V RMS (sea level)
- 1.3 NOMINAL IMPEDANCE: 50 OHMS
- 1.4 DWV: 3000 V RMS @ 60 Hz (sea level)
- 1.5 TEMPERATURE RANGE: -65° C TO +165° C

- 2.0 MATERIALS
- 2.1 DIELECTRICS: TEFLON, ASTM-D-1710
- 2.2 CENTER CONTACT: BRASS ASTM-B-16
- 2.3 FEMALE OUTER CONTACT: PHOSPHOR BRONZE, ASTM-B-139, ALLOY B2
- 2.4 OTHER METAL PARTS: BRASS, ASTM-B-16
- 2.5 GASKETS: SILICONE RUBBER, ZZ-R-765, CLASS II, GR. 50
- 3.0 FINISHES:
- 3.1 CENTER CONTACT: SILVER PLATED
- 3.2 ALL OTHER METAL PARTS: NICKEL PLATED
- 4.0 MECHANICAL
- 4.1 INTERFACE IN ACCORDANCE WITH MIL-STD-348



CABLE INSTRUCTIONS: B-04



PROPRIETARY  
 THIS DRAWING CONTAINS CONFIDENTIAL INFORMATION PROPRIETARY TO SAN\*TRON INC. IT MUST NOT BE REPRODUCED OR DISCLOSED TO OTHERS OR USED IN ANY OTHER WAY, IN WHOLE OR PART EXCEPT AS AUTHORIZED IN WRITING BY SAN\*TRON INCORPORATED.

REMOVE ALL BURRS AND SHARP EDGES .005 MAX. UNLESS OTHERWISE STATED ALL DIMENSIONS ARE IN INCHES AND APPLY AFTER PLATING

Rev.	Revisions	Date	Dwn.	Appd.
A	ORIGINAL	01/08/03	X	X
RECOM. STOCK SIZE		FT/M PCS	QTY REQD	

UNSPECIFIED TOL.	DWN	LAP	01/08/03
.XX ± .01	CHKD	S/S	
.XXX ± .005	APPR	FSH	
FRAC. ± 1/64			
CONCENTRICITY .004 TIR			63
ALL MACHINED SURFACES			

**SAN-TRON, INC.**  
 4 NEWBURYPORT TPK. IPSWICH MA USA 01938  
 TEL (978) 356-1585 FAX (978) 356-1573  
 WWW: santron.com E MAIL: santron@santron.com

TITLE: C PLUG, STRAIGHT, CLAMP FOR CABLE GROUPS 2, 2A

MATERIAL: SEE NOTE 2.0

FINISH: SEE NOTE 3.0

FSCM NO. 50896

DWG NO. 01-627B-1

SCALE 3 : 1

REV. A