

Internal High Density Feed Through



DM6100 (Male/Female)

The DM6100 series of high density pluggable feed-thru terminators installs between the I/O port and a ribbon cable bus connector. This permits a quick and simplified change in peripheral devices within an existing system configuration.

Features

- Mechanical polarization for proper orientation
- 100% electrically tested
- .050" contact spacing
- Available in standard or custom circuitry

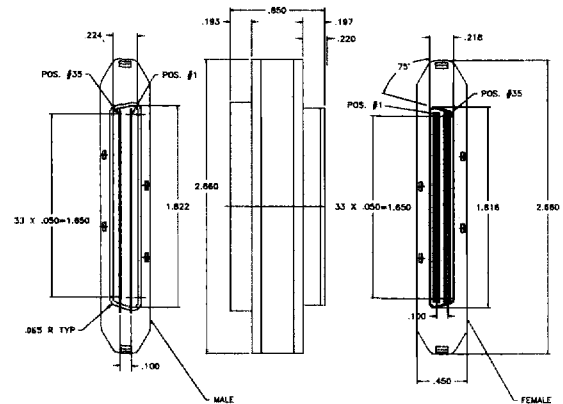
Specifications

Contact Material: Phosphor Bronze 510

Contact Plating: Selective Gold over Nickel

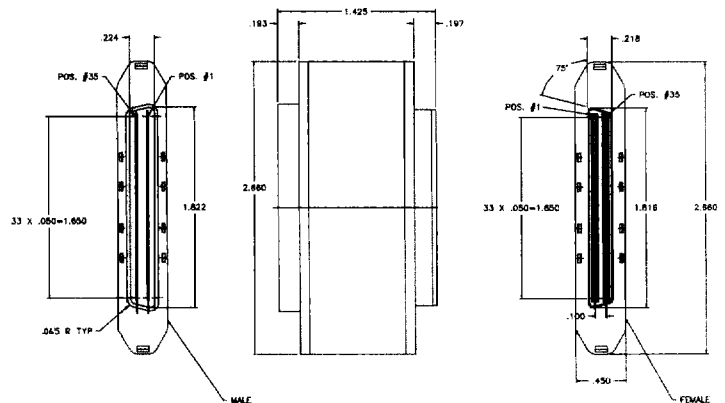
Insulator Material: Valox 420SEO 94V-0

Housing Material: Valox 420SEO 94V-0



DM6100-01-68

Part Number	No. of Rows/Pos.	Bus Interface Description
DM6100-01-68	34/68	Differential
DM6100-02-68	34/68	Single Ended
DM6100-02-68R	34/68	Regulated
DM6100-02-68ADR	34/68	Active Deassertion Regulated
DM6100-02-68RSK	34/68	Regulated SLICK
DM6100-5050-SE	25/50	Single Ended
DM6100-5050-R	25/50	Regulated
DM6100-5050-RSK	25/50	Regulated SLICK



DM6100-02-68R

