

RED INDICATES ORIGINAL

DASH NO	CONNECTOR TYPE	MATERIAL	ASSEMBLER	FIG	MTG HOLE FIG
-1	PL75	310-0002-7	TAI-189	1A	—
-2	CJ70	3-0043-7		2A	—
-3	BJ79	3-0018-7		3A	10
-4	BJ74	3-0055-7		4A	11
-5	PL375	315-0011-7		1B	—
-6	CJ370	3-0066-7		2B	—
-7	BJ379	3-0074-7		3B	10
-8	BJ374	3-0073-7		4B	11
-9	PL74	310-0025-7		5A	—
-10	CJ70TL	3-0217-7		6A	—
-11	BJ79TL	3-0112-7		7A	10
-12	BJ74TL	3-0105-7		8A	11
-13	PL75FL	310-0006-7		5B	—
-14	CJ70FL	3-0101-7		6B	—
-15	BJ79FL	3-0052-7		7B	10
-16	BJ74FL	3-0099-7		8B	11
-17	PL73	310-0038-7		9	—

DATA CONTAINED IN THIS DOCUMENT IS PROPRIETARY TO TROMPETER ELECTRONICS INC. AND SHALL NOT BE DISCLOSED, COPIED OR USED FOR PROCUREMENT OR MANUFACTURE WITHOUT EXPRESS WRITTEN PERMISSION.

REVISIONS			305-0546		SH
REV	ED	DESCRIPTION	OWN	APPROVED	DATE
D	11943	ADDED NOTES Δ SEE ECD	AAH	<i>Bm</i>	3/15/84

FIG 1

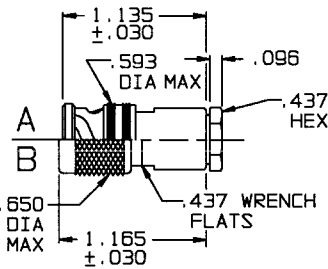


FIG 2

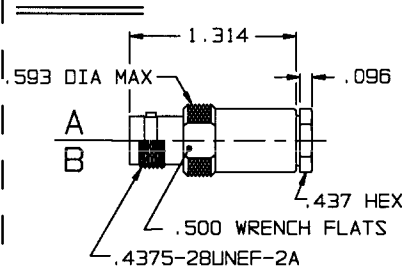


FIG 3

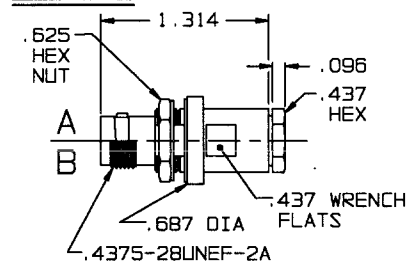


FIG 4

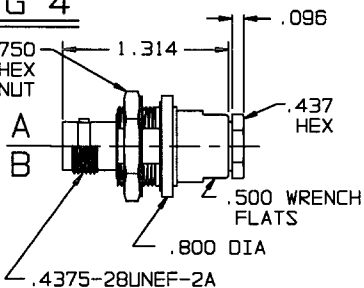


FIG 5

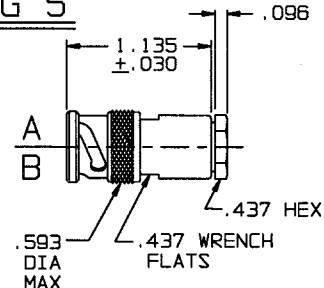


FIG 6

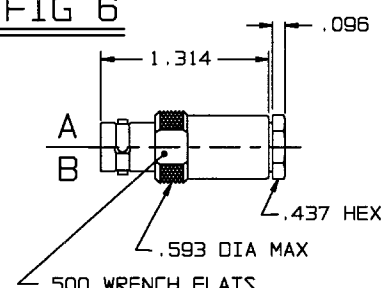
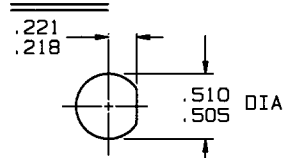
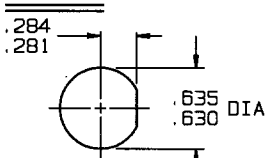


FIG 10



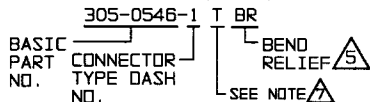
RECOMMENDED
PANEL CUTOUT
MAX PNL THK .109

FIG 11



RECOMMENDED
PANEL CUTOUT
MAX PNL THK .140

6. EXAMPLE OF COMPLETE P/N:



Δ IF "BR" VERSION REQD REPLACE 8-1580-30 WITH 8-1939-30

Δ REPLACE THE FOLLOWING: WITH THE FOLLOWING:
8-1590-7 CONE 8-1590-9 CONE
8-1580-7 CLAMP NUT 8-1580-30 CLAMP NUT

3. CONCENTRIC TWIAX/TRIAX, 2-LUG, 3-LUG, 4-LUG AND THREADED CABLE PLUGS/RECEPTACLES, INSULATED & NONINSULATED BULKHEAD MOUNT RECEPTACLE & PUSH-ON CABLE FOR MCDONNELL DOUGLAS CABLE # ST5M1323 (TIMES AA-2325) HUGHES HMS 2-1149/76, HAVEG 51-04423, TENSOLITE 26895/15X-1

2. FINISH TFS-1A (NICKEL)

1. ALL DIM ARE IN INCHES

Δ POLARIZATION LETTER I.A.W. TOP ASSEMBLY MATERIAL CALL-OUT. NONE REQUIRED FOR STANDARD

QTY	DESCRIPTION		PART NUMBER	ITEM
TOL UNLESS SPECIFIED	TROMPETER ELECTRONICS, INC.		"70" SERIES ST5M1323 / AA-2325 / 26895 / 15X-1	
.XX ±	MATERIAL		CODE IDENT	DRAWING NO.
.XXX ±	—		14949	305-0546
.XXX ±	—		DATE 12-13-84	REV
ANGLES ±	—		SCALE —	D
DWN AAH 3-6-97	ENGR —		APPR <i>fa</i> 3/7/97	SHEET