

# 7.0 mm x 5.0 mm XO

# C85F series

### Description:

The C85F Crystal Oscillator (XO) Series products provide a wide range of options in temperature stability, operating frequency range, and ultra low phase jitter in a 7.0 x 5.0 mm ceramic package.



### Features:

- Available in frequencies from 19.44 MHz to 320 MHz.
- Tri-state Enable/Disable
- Hermetically sealed ceramic SMD package
- RoHS-6/Leadfree compliant
- Integrated jitter 0.3 pS max.
- PECL and LVDS outputs

### Frequency Range, Operating Temperature, and Frequency Stability:

Frequency	Operating Temperature	Product Code	Freq. Stability	Product Code
19.44 to 320MHz	-10 to +60C	<b>A</b>	+/- 25 ppm	<b>A</b>
	0 to +70C	<b>B</b>	+/- 50 ppm	<b>B</b>
	-20 to 70C	<b>C</b>	+/- 75 ppm	<b>C</b>
	-40 to 85C	<b>D</b>	+/-100ppm	<b>D</b>

- \*\*\*Frequency stability includes 25C tolerance, drift over temperature, change versus voltage and load, 20 year aging, shock and vibration

### Aging: (typical at 20MHz after 30 days continuous operation)

Frequency	Timeframe	Aging	Product Code
20 MHz	1st Year	+/- 5.0ppm	<b>N/A</b>

### Supply Voltage (Vs):

Power Supply (Vs)	2.5 Vdc +/-10%	3.3 Vdc +/-10%
<b>Product Code</b>	<b>A</b>	<b>B</b>

### Supply Voltage Sensitivity ( +/- 10% ) : +/- 2 ppm max. frequency change

### Current Consumption ( I<sub>DD</sub> ):

Frequency Range ( MHz )	I <sub>DD</sub> ( at 2.5V )	I <sub>DD</sub> ( at 3.3V )
	PECL / LVDS	PECL / LVDS
	mA	mA
19.440 to 160.000	75 / 50	75 / 50
160.000 to 250.000	100 / 50	100 / 50
250.000 to 320.000	100 / 65	100 / 65

### Environmental:

Storage Temperature	-55 to +125 °C
---------------------	----------------

### Output Waveform:

	PECL	PECL	LVDS	LVDS
<b>Product Code</b>	<b>A</b>		<b>B</b>	
	At 2.5 V	At 3.3 V	At 2.5 V	At 3.3 V
Output Logic 1	1.475 Vmin	2.275Vmin	1.6Vmax	1.6Vmax
Output Logic 0	1.095 Vmax	1.680Vmax	0.9Vmin	0.9Vmin
Rise/Fall Time ( nS )	1 max	1 max	1 max	1 max

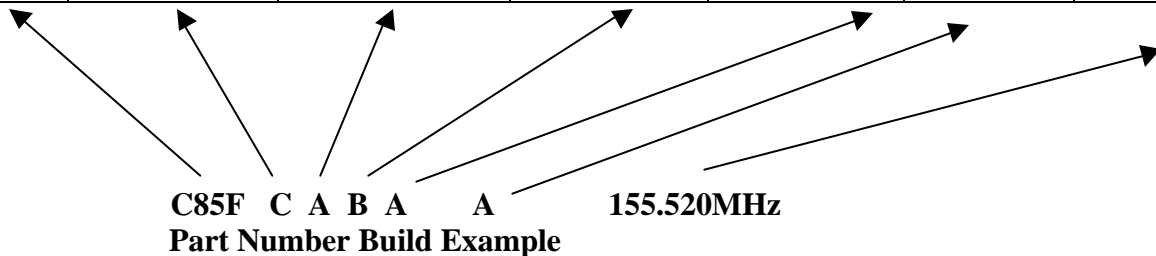
**Start-up Time: 3 mS max.**

### Tri-state function Pin 1 or Pin 2:

Pin 1 or 2 = Output Active with 2.0 V or 2.5 V on Pin 1 or 2 for 2.5V or 3.3V supply respectively  
 Pin 1 or 2 = Output in high impedance state when 0.5 volts or less on Pin 1 or 2

### Ordering Options:

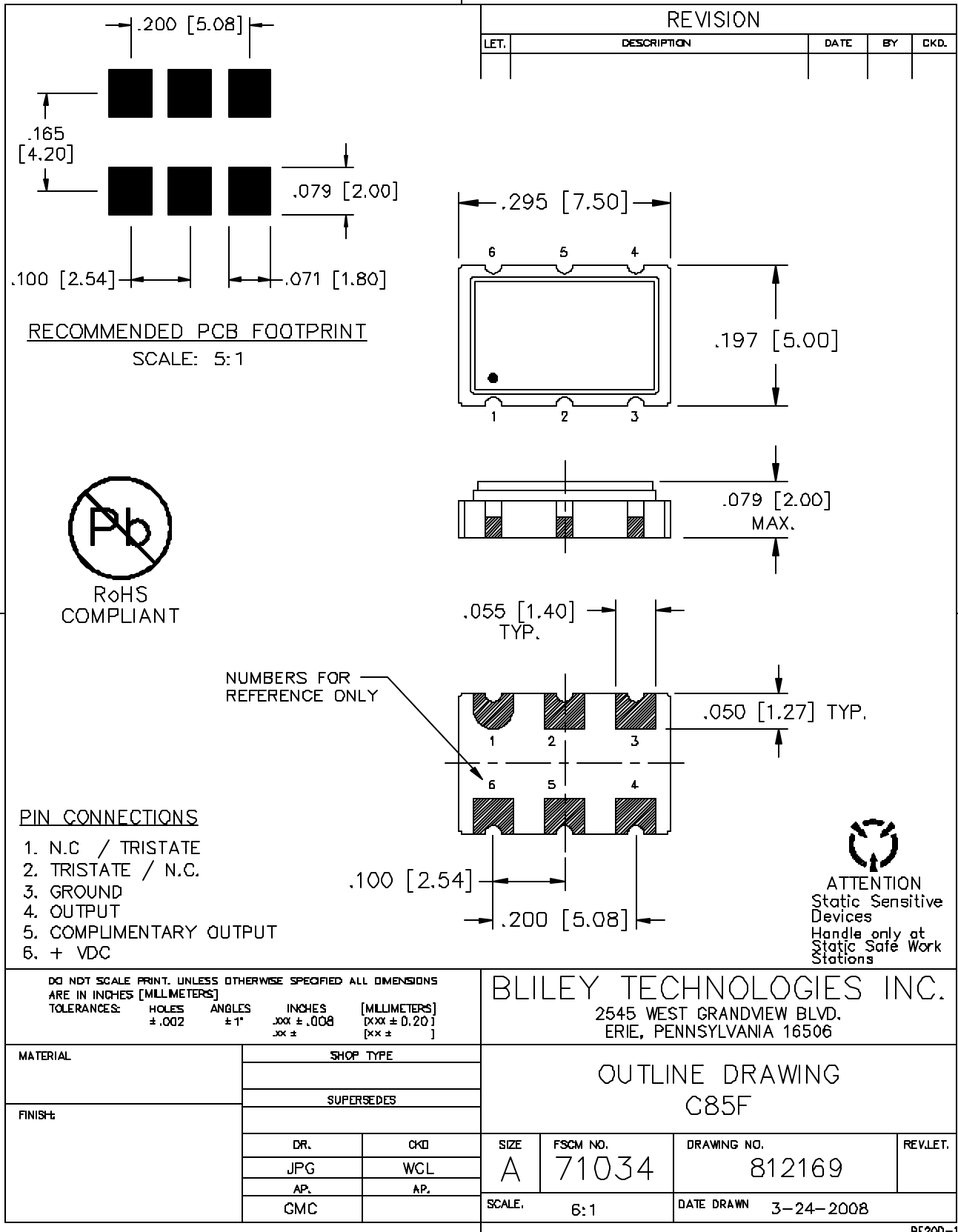
Product Family	Operating Temperature	Frequency Stability	Supply Voltage	Pin 1 or Pin 2 as Tri-state	Output Type	Operating Frequency
C85F	A	A	A	A ( Pin 1 )	A	XXX.XXXMHz
C85F	B	B	B	B ( Pin 2 )	B	XXX.XXXMHz
C85F	C	C				XXX.XXXMHz
C85F	D	D				XXX.XXXMHz



**\*\*Consult Bliley sales if other options required**

**\*\* Not all combinations of operating frequency and supply voltage are available.**

**RoHs compliant; -20 to 70C; +/- 25 ppm with a 3.3 volt supply; Pin1 as Tri-state; Pin 2 as N/C; PECL outputs and 155.520 MHz nominal operating frequency.**



PE200-1

**How to Order This Product:**

Contact Bliley Technologies with Product Selection Code from Ordering Options Section above.

**Attn:**

Sales @ Bliley

Fax: **814-833-2712**

Phone: 814-838-3571

Email: [info@bliley.com](mailto:info@bliley.com)

Web: [www.bliley.com](http://www.bliley.com)

Date: \_\_\_\_\_

**From:**

Name: \_\_\_\_\_ Company: \_\_\_\_\_

Fax: \_\_\_\_\_ Phone: \_\_\_\_\_

Email: \_\_\_\_\_

Quantities to Quote: \_\_\_\_\_ Target Price: \$\_\_\_\_\_

Application / Reference #: \_\_\_\_\_