
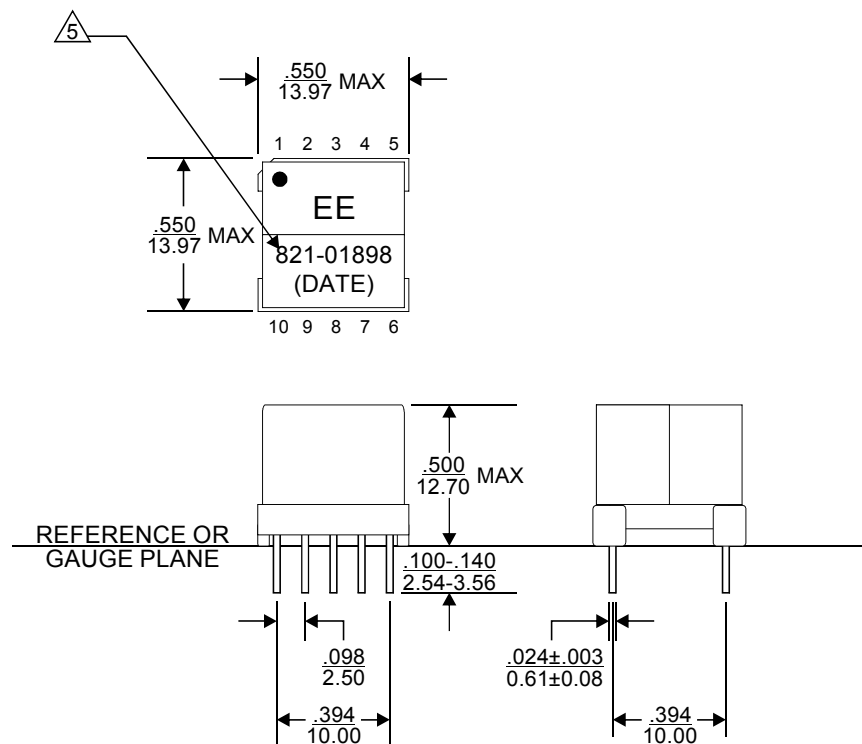


REVISIONS			
REV.	DESCRIPTION	ECN NO.	DATE
01	FIRST RELEASE FOR RFQ#D2008-6845	-----	01/31/08

PAGE 4 IS FOR INTERNAL USE ONLY

PART NUMBER		PART DESCRIPTION		TITLE											
821-01898		Standard version, with Lead(Pb)		TRANSFORMER, TH, 10 PIN											
821-01898F		RoHS compliant per EU Directive 2002/95/EC(without exemption of solder content)													
<p align="center"><u>WARNING !</u></p> <p>ALL SHEETS OF THIS DOCUMENT ARE CONTROLLED DOCUMENTATION AND ARE NOT TO BE RELEASED OUTSIDE OF E&E OR ITS SUB-CONTRACTORS WITHOUT AUTHORIZATION.</p>		UNLESS OTHERWISE SPECIFIED, DIMENSIONS ARE IN INCH/mm.		APPROVALS											
		<p align="center"><u>TOLERANCE ARE:</u></p> <table border="0"> <tr> <td>INCH</td> <td>mm</td> <td>ANGLE</td> </tr> <tr> <td>.XXX ± .005</td> <td>.XX ± .13</td> <td>X.X ± 0.3</td> </tr> <tr> <td>.XX ± .02</td> <td>.X ± .5</td> <td>X. ± 1</td> </tr> </table>		INCH	mm	ANGLE	.XXX ± .005	.XX ± .13	X.X ± 0.3	.XX ± .02	.X ± .5	X. ± 1	DATE		 <p>E & E Magnetic Products Ltd.</p>
		INCH	mm	ANGLE											
		.XXX ± .005	.XX ± .13	X.X ± 0.3											
		.XX ± .02	.X ± .5	X. ± 1											
DRAWN BY		W.P. CHENG		01/31/08											
PROJ. ENG		W.P. CHENG		01/31/08											
APPROVED BY		V. TSUI		01/31/08											
Q.A.		C.M. TSUI		01/31/08											
				DRAWING NO./MODEL											
				821-01898											
				REV											
				01											
				SCALE											
				DO NOT SCALE											
				PAGE											
				1											
				OF											
				4											



MECHANICAL OUTLINE

1. Dimensions are specified in $\frac{\text{inches}}{\text{mm}}$ with higher precedence in inches.
2. Unless otherwise specified, all tolerances are $\pm \frac{.010}{.025}$.
3. "(DATE)" includes at least the manufacturing date code (in YYWW format) plus two character country code.
4. For RoHS compliant version, 821-01898F, the part will be marked with "821-01898F", instead of "821-01898".



E & E Magnetic Products Ltd.

DRAWING NO./MODEL

821-01898

REV

01

SCALE

DO NOT SCALE

PAGE

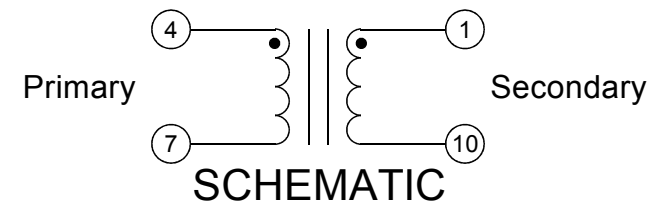
2

OF

4

ELECTRICAL SPECIFICATION @25°C:

PARAMETERS	UNIT	LIMITS
Turns Ratio(4-7):(1-10)	-	1 : 0.046 ± 1%
Polarity	-	Per Schematic
Ls(4-7)@10kHz, 0.1Vrms, 0Adc	mH	1.9 ± 10%
Ls(4-7)@10kHz, 0.1Vrms,500mAdc	mH	1.7 typical
LL(4-7), short 1-10@100kHz, 0.1Vrms	uH	130 Max
DCR(4-7)	Ω	2.57 ± 15%
DCR(1-10)	mΩ	46.4 ± 15%
Hipot(1):(4), 3mA, 2s	Vrms	1500 Min



5. Operating temperature: 0°C to +70°C. The part temperature (ambient temperature + temperature rise) should not exceed the upper limit of the operating temperature under worst case operating conditions. Circuit design, component placement, PWB trace size and thickness, airflow and other cooling provisions all affect the part temperature. Part temperature should be verified in the end application.



E & E Magnetic Products Ltd.

DRAWING NO./MODEL

821-01898

REV

01

SCALE

DO NOT SCALE

PAGE

OF

3

4