

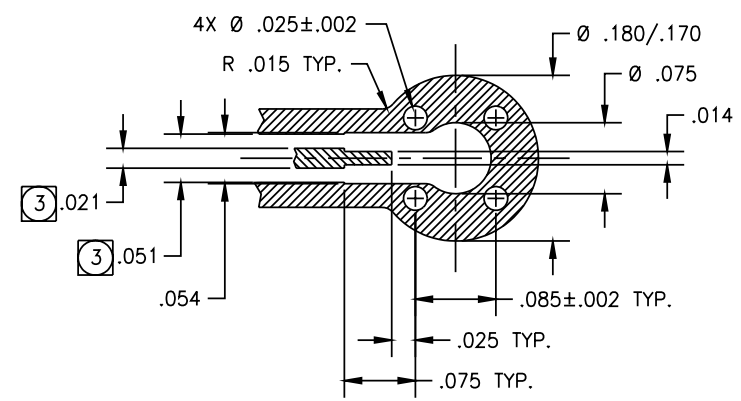
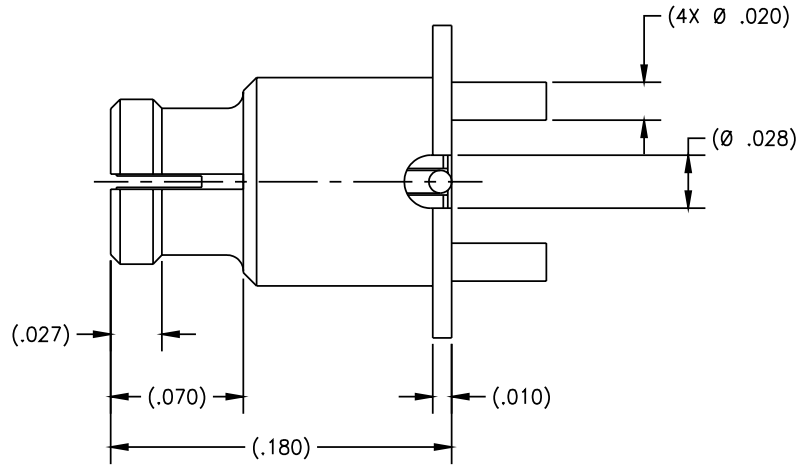
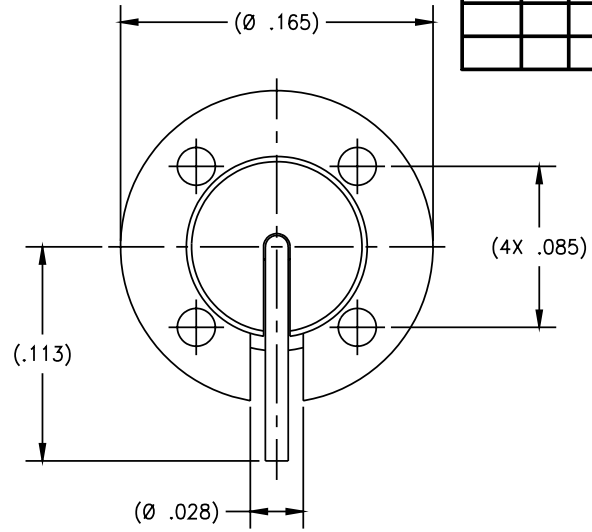
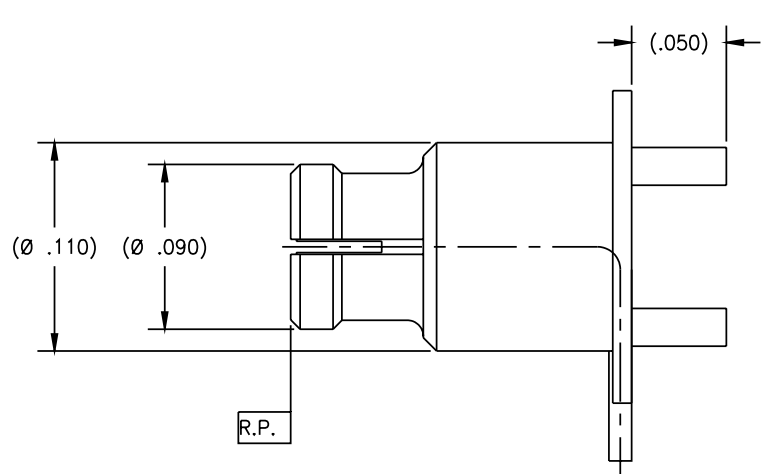
4

3

2

1

REVISIONS				
ZONE	REV	DESCRIPTION	DATE	BY
-	-	-	-	-



DRAWING NO.	P310	REV.	-
-------------	------	------	---

NOTE(S):

- 1. MATERIAL(S):
 - 1.1 BODY & CONTACT: BRASS ALLOY PER ASTM B-16
 - 1.2 INSULATOR: POLYAMIDE-IMIDE (TORLON) PER MIL-P-46179.
- 2. FINISH(ES):
 - 2.1 BODY & CONTACT: GOLD PLATED PER ASTM B-488 OVER NICKEL PLATE PER QQ-N-290
 - 2.3 INSULATOR: NONE
- 3. DIMENSIONS SHOWN ARE FOR ROGERS 4350 PCB MATERIAL. THESE DIMENSIONS MAY VARY DEPENDING ON PCB MATERIAL USED.

NOTICE
 THIS DRAWING EMBODIES A CONFIDENTIAL PROPRIETARY DESIGN ORIGINATED BY TENSOLITE COMPANY AND ALL DESIGN, MANUFACTURING REPRODUCTION, USE AND SALE RIGHTS REGARDING THE SAME ARE EXPRESSLY RESERVED. IT IS SUBMITTED UNDER A CONFIDENTIAL RELATIONSHIP FOR A SPECIFIED PURPOSE AND THE RECIPIENT AGREES BY ACCEPTING THIS DRAWING NOT TO SUPPLY OR DISCLOSE ANY INFORMATION REGARDING IT TO ANY UNAUTHORIZED PERSON OR TO INCORPORATE IN OTHER PRODUCTS ANY SPECIAL FEATURES PECULIAR TO THIS DESIGN. ALL PATENT RIGHTS HERETO ARE EXPRESSLY RESERVED BY TENSOLITE COMPANY, LONG BEACH, CALIFORNIA 90815

TOLERANCES AND NOTES EXCEPT AS NOTED
 DIMENSIONS ARE IN INCHES.
 LINEAR .XXX ±.016
 FRACTION .XXX ±.005 ANGULAR ± 1/2°
 FRACTION ± 1/32

1. MACHINE FINISH: $\sqrt{32}$ RMS
2. BREAK ALL SHARP EDGES .003 MAX.
3. MACHINED FILLETS .005 MAX.
4. MACHINED SURFACES SQUARE TO RESPECTIVE AXIS WITHIN .005 INCHES PER INCH.
5. MACHINED DIAMETERS CONCENTRIC WITHIN .002 T.L.R.
6. DIMENSIONS TO BE MET BEFORE PLATING.
7. CHAMFER ALL THREADS 45°.
8. THREADS PER H-28
9. REMOVE FRAYED EDGES ON TEFLON.
10. REMOVE ALL BURRS.

MATERIAL	SIZE	SPECIFICATION	PROCUREMENT
APPROVAL INITIALS	DATE	TITLE	
		SSMP FEMALE RIGHT ANGLE SURFACE MOUNT	
DRAWN BY	AGS	04.20.01	
CHECKED			
QUALITY			
ENGINEERING	JD	04.20.01	
SCALE		SUB-DIRECTORY FILENAME	
20:1		_OLPXXX\OLP310	
SIZE	CAGE CODE	DRAWING NO.	
C 30990		P310	
SHEET 1 OF 1			REV. -

4

3

2

1