

.050" 1,27 mm Center Rectangular Connectors

UMI Ulti Mate Inc.
Orange, CA
714-937-9388

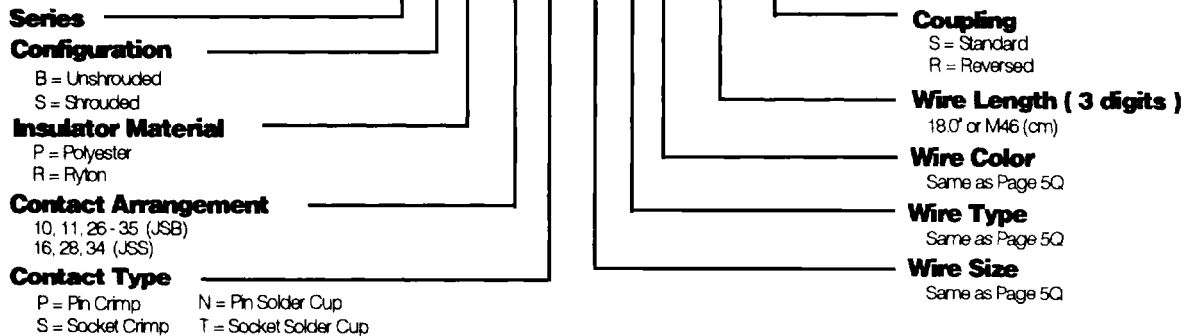
JS Series Center Jackscrew Connectors

A Family of microminiature center jackscrew connectors, the JSB Series is currently available with layouts of 10, 11, 26 and 35 contacts. The shrouded JSS Series is designed with 16, 28 and 34 contacts. Both the JSB and the JSS Series have a full range of terminations including cable to cable, board to cable, board to board and other combinations.

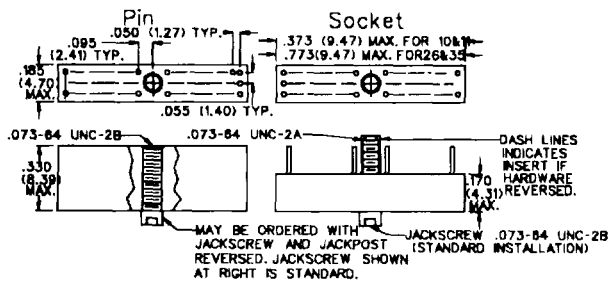


Ordering Information

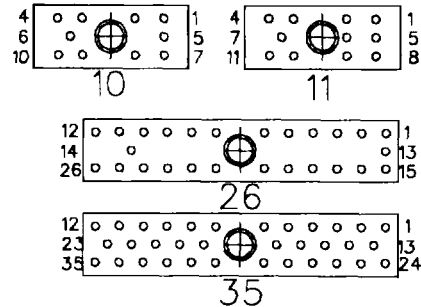
JS B P -26 P -26 E 5 -18.0 S



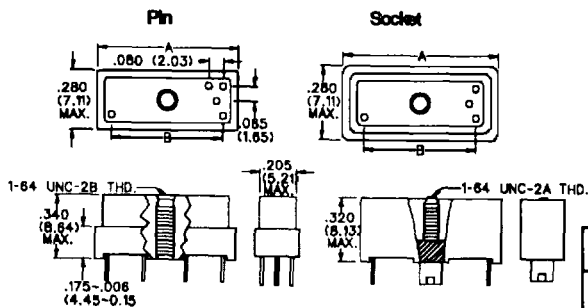
JSB Series / Unshrouded
Dimensions Inches (mm)



Front View of Pin Insert

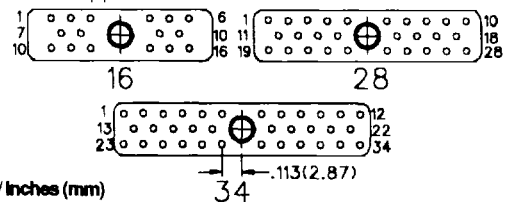


JSS Series / Shrouded
Dimensions / Inches (mm)



Front View of Pin Insert

Identification numbers are for reference only and do not appear on the connectors.



No. of Contacts	Dim A Max.	Dim B BSC
16 P or S	.700 17.78	545 13.64
28 P or S	1.020 25.91	865 21.97
34 P or S	1.080 29.97	1.025 26.04

