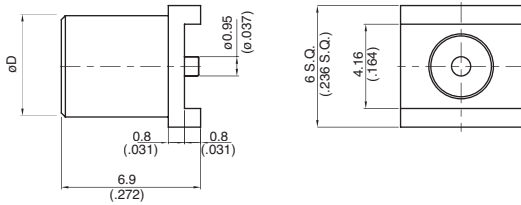
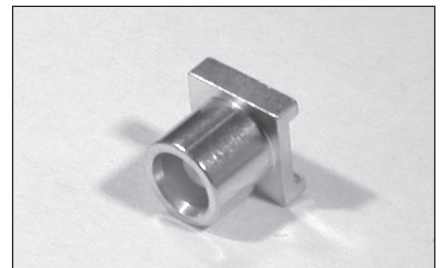
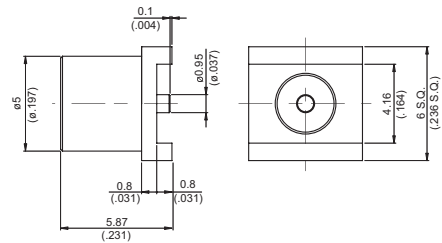


► **MCX JACK P.C.B. SURFACE MOUNT**



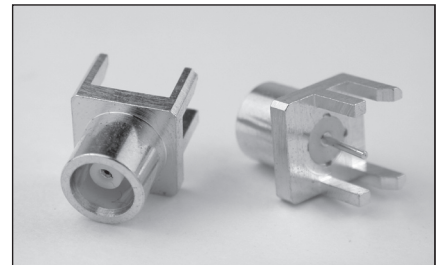
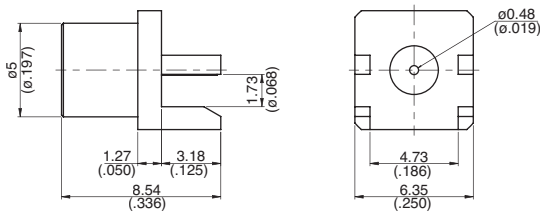
Part Number	Measurements	M.H.	Weight	Material	Remarks
MCX8401-0000	$\phi D=4.5(.177)$	53	0.72g	C1	
MCX8400-0001	$\phi D=5.0(.197)$	53	0.76g	C1	
MCX8400-0003	$\phi D=5.0(.197)$	53	0.83g	C1	Mylar Cap;Tape & Reel Packaged

► **MCX JACK P.C.B. SURFACE MOUNT**



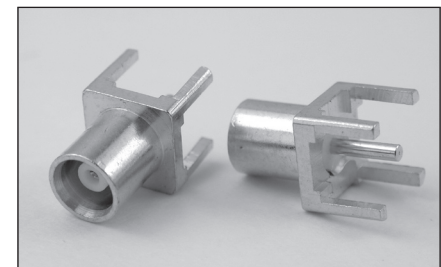
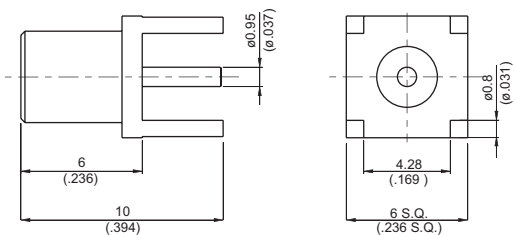
Part Number	M.H.	Weight	Material	Remarks
MCX8400-0002	53	0.68g	C1	Mylar Cap; Tape & Reel packaged

► **MCX JACK P.C.B. MOUNT (END LAUNCH)**



Part Number	Weight	Material	Remarks
MCX8401A-0000	0.84g	C1	
MCX8475A-0000	0.58g	C1	Impedance=75ohm

► **MCX JACK P.C.B. MOUNT**



Part Number	M.H.	Weight	Material
MCX8402-0000	79	0.7 g	C1

MCX