

National Semiconductor is now part of  
Texas Instruments.

Search <http://www.ti.com/> for the latest technical  
information and details on our current products and services.

## 3G HD/SD SDI Low Power Extended Reach Adaptive Cable Equalizer

### General Description

The LMH0394 3 Gbps HD/SD SDI Low Power Extended Reach Adaptive Cable Equalizer is designed to equalize data transmitted over cable (or any media with similar dispersive loss characteristics). The equalizer operates over a wide range of data rates from 125 Mbps to 2.97 Gbps and supports SMPTE 424M, SMPTE 292M, SMPTE 344M, SMPTE 259M, and DVB-ASI standards.

The LMH0394 provides extended cable reach with ultra low power consumption. The equalizer includes active sensing circuitry that ensures robust performance and enhanced immunity to variations in the input signal launch amplitude. The output driver offers programmable de-emphasis for up to 40" of FR4 trace losses. The LMH0394 includes power management to further reduce power consumption when no input signal is present.

The LMH0394 supports two modes of operation. In pin mode, the LMH0394 operates with control pins to set its operating state, and is footprint compatible with the LMH0384, LMH0344, and legacy SDI equalizers. In SPI mode, an optional SPI serial interface can be used to access and configure multiple LMH0394 devices in a daisy-chain configuration. This allows programming the output common mode voltage and swing, output de-emphasis level, input launch amplitude, and power management settings, as well as access to a cable length indicator and all pin mode features.

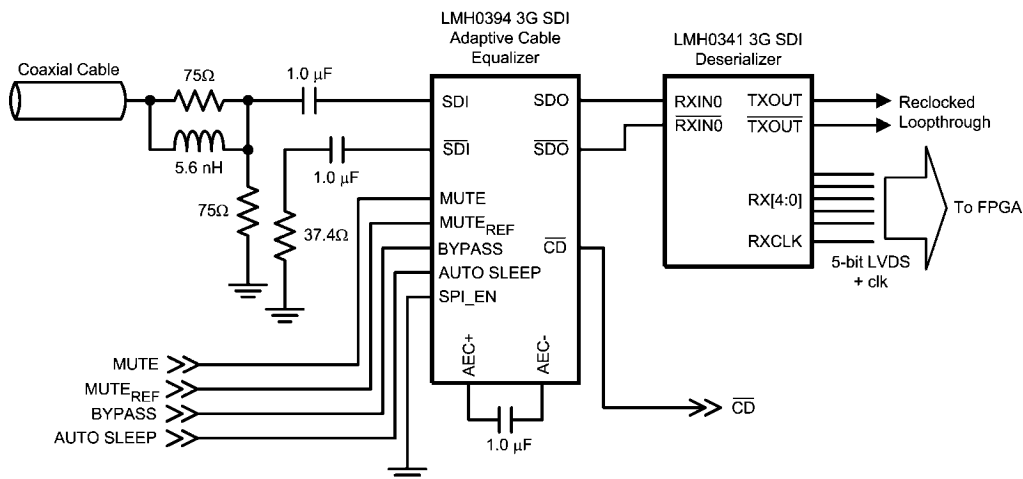
### Features

- SMPTE 424M, SMPTE 292M, SMPTE 344M, SMPTE 259M, and DVB-ASI compliant
- Equalizes up to 200 meters of Belden 1694A at 2.97 Gbps, up to 220 meters of Belden 1694A at 1.485 Gbps, or up to 400 meters of Belden 1694A at 270 Mbps
- Ultra low power consumption: 115 mW (normal operation)
- Power save mode with auto sleep control (17 mW typical power consumption in power save mode)
- Output de-emphasis to compensate for FR4 board trace losses
- Digital and analog programmable MUTE<sub>REF</sub> threshold control
- Optional SPI register access
- Wide range of data rates: 125 Mbps to 2.97 Gbps
- Internally terminated 100Ω LVDS outputs with programmable output common mode voltage and swing
- Programmable launch amplitude optimization
- Cable length indicator
- Single 2.5V supply operation
- 16-pin LLP package
- Industrial temperature range: -40°C to +85°C
- Footprint compatible with the LMH0384 and also the LMH0344, LMH0044, and LMH0074 in pin mode.

### Applications

- SMPTE 424M, SMPTE 292M, SMPTE 344M, and SMPTE 259M serial digital interfaces
- Broadcast Video routers, switchers, and distribution amplifiers

### Typical Application (Pin Mode)



30101501

## Absolute Maximum Ratings *(Note 1)*

|                            |                        |
|----------------------------|------------------------|
| Supply Voltage             | 3.1V                   |
| Input Voltage (all inputs) | -0.3V to $V_{CC}+0.3V$ |
| Storage Temperature Range  | -65°C to +150°C        |
| Junction Temperature       | +125°C                 |
| Package Thermal Resistance |                        |
| $\theta_{JA}$ 16-pin LLP   | +40°C/W                |
| $\theta_{JC}$ 16-pin LLP   | +6°C/W                 |
| ESD Rating (HBM)           | $\geq \pm 6$ kV        |
| ESD Rating (MM)            | $\geq \pm 300$ V       |
| ESD Rating (CDM)           | $\geq \pm 2$ kV        |

## Recommended Operating Conditions

|   |                |
|---|----------------|
| Supply Voltage ( $V_{CC} - V_{EE}$ )            | 2.5V $\pm 5\%$ |
| Input Coupling Capacitance                      | 1.0 $\mu$ F    |
| AEC Capacitor (Connected between AEC+ and AEC-) | 1.0 $\mu$ F    |
| Operating Free Air Temperature ( $T_A$ )        | -40°C to +85°C |

## DC Electrical Characteristics

Over Supply Voltage and Operating Temperature ranges, unless otherwise specified *(Note 2, Note 3)*.

| Symbol          | Parameter   | Conditions   | Reference              | Min      | Typ  | Max      | Units             |
|-----------------|---|--|------------------------|----------|------|----------|-------------------|
| $V_{IH}$        | Input Voltage High Level  |  | Logic Inputs           | 1.7      |      | $V_{CC}$ | V                 |
| $V_{IL}$        | Input Voltage Low Level   |  |                        | $V_{EE}$ |      | 0.7      | V                 |
| $V_{SDI}$       | Input Voltage Swing   | 0m cable length, <i>(Note 5)</i>                                       | SDI, $\overline{SDI}$  | 720      | 800  | 880      | mV <sub>P-P</sub> |
| $V_{CMIN}$      | Input Common Mode Voltage                                       |  |                        |          | 1.65 |          | V                 |
| $V_{SSP-P}$     | Differential Output Voltage, P-P                                | 100 $\Omega$ load, default register settings <i>(Note 6, Figure 1)</i> | SDO, $\overline{SDO}$  | 500      | 700  | 900      | mV <sub>P-P</sub> |
| $V_{OD}$        | Differential Output Voltage                                     |  |                        | 250      | 350  | 450      | mV                |
| $\Delta V_{OD}$ | Change in Magnitude of $V_{OD}$ for Complimentary Output States |  |                        |          |      | 50       | mV                |
| $V_{OS}$        | Offset Voltage  |  |                        | 1.1      | 1.2  | 1.35     | V                 |
| $\Delta V_{OS}$ | Change in Magnitude of $V_{OS}$ for Complimentary Output States |  |                        |          |      | 50       | mV                |
| $I_{OS}$        | Output Short Circuit Current                                    |  |                        |          |      | 30       | mA                |
|                 | MUTE <sub>REF</sub> DC Voltage (floating)                       |  | MUTE <sub>REF</sub>    |          | 1.3  |          | V                 |
|                 | MUTE <sub>REF</sub> Range                                       |  |                        |          | 0.8  |          | V                 |
| $V_{OH}$        | Output Voltage High Level                                       | $I_{OH} = -2$ mA   | $\overline{CD}$ , MISO | 2.0      |      |          | V                 |
| $V_{OL}$        | Output Voltage Low Level  | $I_{OL} = +2$ mA   |                        |          |      | 0.2      | V                 |
| $I_{CC}$        | Supply Current  | Normal operation, <i>(Note 7)</i>                                      |                        |          | 45   | 63       | mA                |
|                 |   | Power save mode  |                        |          | 7    | 10       | mA                |

## AC Electrical Characteristics

Over Supply Voltage and Operating Temperature ranges, unless otherwise specified (*Note 3*).

| Symbol                          | Parameter                        | Conditions  | Reference | Min | Typ  | Max  | Units |
|---------------------------------|----------------------------------|---|-----------|-----|------|------|-------|
| BR <sub>MIN</sub>               | Minimum Input Data Rate          |   | SDI, SDI  |     | 125  |      | Mbps  |
| BR <sub>MAX</sub>               | Maximum Input Data Rate          |   |           |     |      | 2970 | Mbps  |
|                                 | Jitter for Various Cable Lengths | 2.97 Gbps, Belden 1694A, 0-100 meters ( <i>Note 8</i> )   |           |     |      | 0.2  | UI    |
|                                 |                                  | 2.97 Gbps, Belden 1694A, 100-140 meters ( <i>Note 8</i> ) |           |     |      | 0.3  | UI    |
|                                 |                                  | 2.97 Gbps, Belden 1694A, 140-180 meters ( <i>Note 8</i> ) |           |     |      | 0.5  | UI    |
|                                 |                                  | 2.97 Gbps, Belden 1694A, 180-200 meters                   |           |     | 0.55 |      | UI    |
|                                 |                                  | 1.485 Gbps, Belden 1694A, 0-200 meters ( <i>Note 8</i> )  |           |     |      | 0.2  | UI    |
|                                 |                                  | 1.485 Gbps, Belden 1694A, 200-220 meters                  |           |     | 0.3  |      | UI    |
|                                 |                                  | 270 Mbps, Belden 1694A, 0-400 meters ( <i>Note 8</i> )    |           |     |      | 0.3  | UI    |
| t <sub>r</sub> , t <sub>f</sub> | Output Rise Time, Fall Time      | 20% – 80%, 100Ω load, ( <i>Note 4</i> ), <i>Figure 1</i>  | SDO, SDO  |     | 80   | 130  | ps    |
|                                 | Mismatch in Rise/Fall Time       | ( <i>Note 4</i> )   |           |     | 2    | 15   | ps    |
| t <sub>OS</sub>                 | Output Overshoot                 | ( <i>Note 4</i> )   |           |     | 1    | 5    | %     |
| RL <sub>IN</sub>                | Input Return Loss                | 5 MHz - 1.5 GHz, ( <i>Note 9</i> )                        | SDI, SDI  | 15  |      |      | dB    |
|                                 |                                  | 1.5 GHz - 3.0 GHz, ( <i>Note 9</i> )                      |           | 10  |      |      | dB    |
| R <sub>IN</sub>                 | Input Resistance                 | single-ended  |           |     | 1.5  |      | kΩ    |
| C <sub>IN</sub>                 | Input Capacitance                | single-ended  |           |     | 0.7  |      | pF    |

## SPI Interface AC Electrical Characteristics

Over Supply Voltage and Operating Temperature ranges, unless otherwise specified (*Note 3*).

| Symbol                                | Parameter                    | Conditions         | Reference | Min | Typ | Max | Units        |
|---------------------------------------|------------------------------|--------------------|-----------|-----|-----|-----|--------------|
| Recommended Input Timing Requirements |                              |                    |           |     |     |     |              |
| f <sub>SCK</sub>                      | SCK Frequency                | Figure 2, Figure 3 | SCK       |     |     | 20  | MHz          |
| t <sub>PH</sub>                       | SCK Pulse Width High         |                    |           | 40  |     |     | % SCK period |
| t <sub>PL</sub>                       | SCK Pulse Width Low          |                    |           | 40  |     |     | % SCK period |
| t <sub>SU</sub>                       | MOSI Setup Time              | Figure 2, Figure 3 | MOSI      | 4   |     |     | ns           |
| t <sub>H</sub>                        | MOSI Hold Time               |                    |           | 4   |     |     | ns           |
| t <sub>SSSU</sub>                     | SS Setup Time                | Figure 2, Figure 3 | SS        | 14  |     |     | ns           |
| t <sub>SSH</sub>                      | SS Hold Time                 |                    |           | 4   |     |     | ns           |
| t <sub>SSOF</sub>                     | SS Off Time                  |                    |           | 1   |     |     | SCK period   |
| Switching Characteristics             |                              |                    |           |     |     |     |              |
| t <sub>ODZ</sub>                      | MISO Driven-to-Tristate Time | Figure 3           | MISO      |     |     | 20  | ns           |
| t <sub>OZD</sub>                      | MISO Tristate-to-Driven Time |                    |           |     |     | 10  | ns           |
| t <sub>OD</sub>                       | MISO Output Delay Time       |                    |           |     |     | 15  | ns           |

**Note 1:** "Absolute Maximum Ratings" are those parameter values beyond which the life and operation of the device cannot be guaranteed. The stating herein of these maximums shall not be construed to imply that the device can or should be operated at or beyond these values. The table of "Electrical Characteristics" specifies acceptable device operating conditions.

**Note 2:** Current flow into device pins is defined as positive. Current flow out of device pins is defined as negative. All voltages are stated referenced to V<sub>EE</sub> = 0 Volts.

**Note 3:** Typical values are stated for  $V_{CC} = +2.5V$  and  $T_A = +25^\circ C$ .

**Note 4:** Specification is guaranteed by characterization.

**Note 5:** The LMH0394 can be optimized for different launch amplitudes via the SPI.

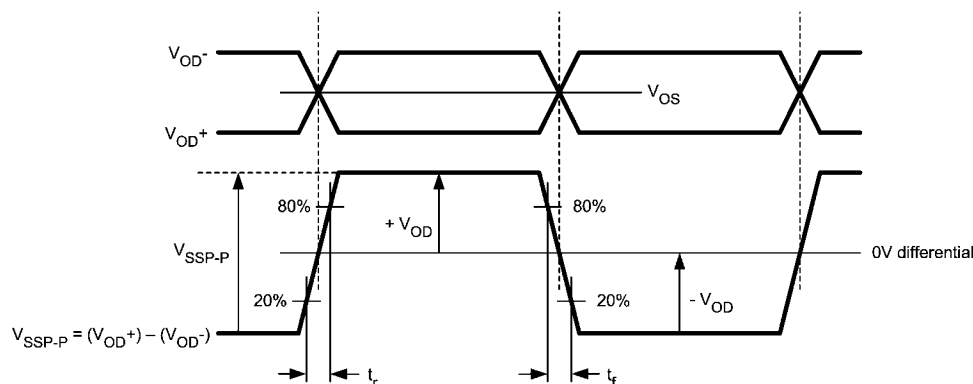
**Note 6:** The differential output voltage and offset voltage are adjustable via the SPI.

**Note 7:** Typical  $I_{CC}$  is measured with a 2.97 Gbps input signal.

**Note 8:** Based on design and characterization data over the full range of recommended operating conditions of the device. Jitter is measured in accordance with SMPTE RP 184, SMPTE RP 192, and the applicable serial data transmission standard: SMPTE 424M, SMPTE 292M, or SMPTE 259M.

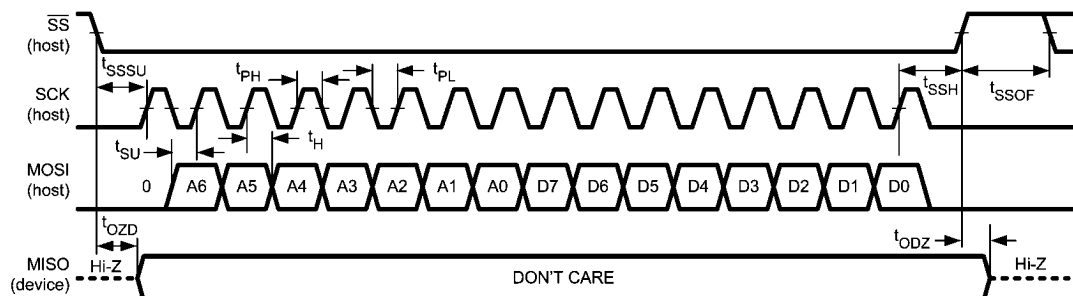
**Note 9:** Input return loss is dependent on board design. The LMH0394 exceeds this specification on the SD394 evaluation board with a return loss network consisting of a 5.6 nH inductor in parallel with a 75 $\Omega$  series resistor on the input.

## Timing Diagrams



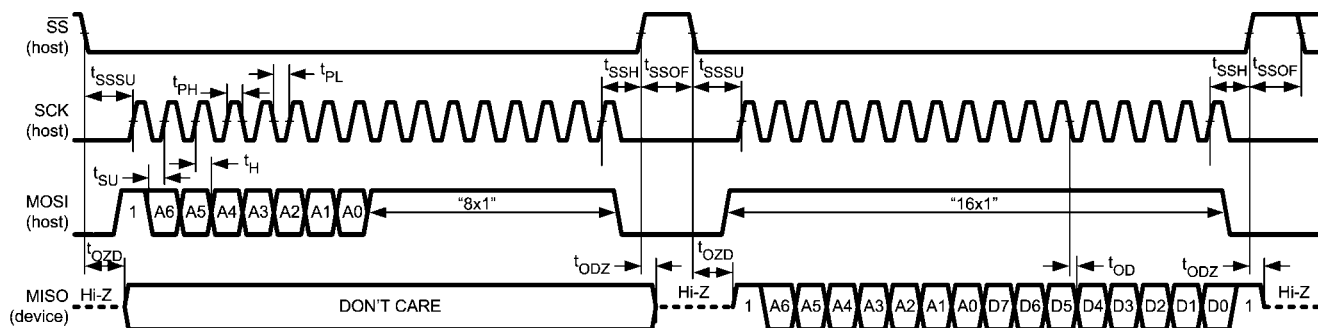
30101508

**FIGURE 1. LVDS Output Voltage, Offset, and Timing Parameters**



30101509

**FIGURE 2. SPI Write**

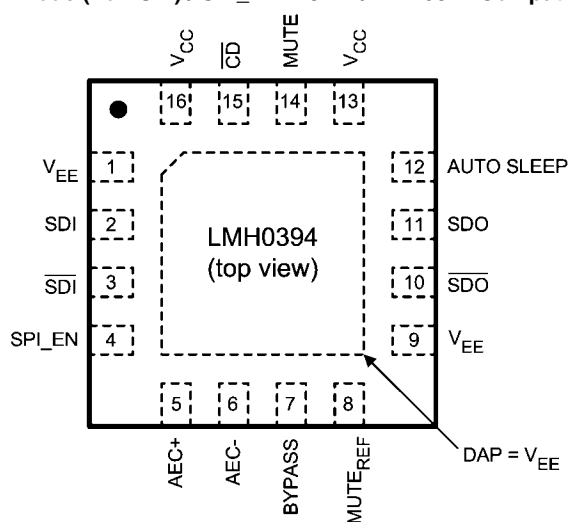


30101510

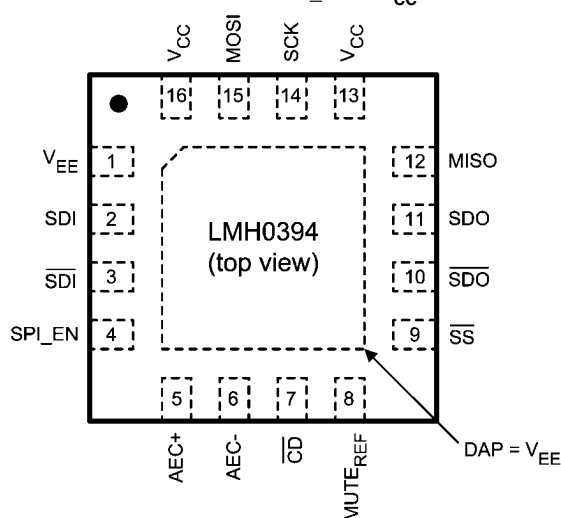
**FIGURE 3. SPI Read**

## Connection Diagrams

Pin Mode (non-SPI) / SPI\_EN = GND / LMH0344 Compatible



SPI Mode / SPI\_EN =  $V_{CC}$



The exposed die attach pad is a negative electrical terminal for this device. It should be connected to the negative power supply voltage.

**16-Pin LLP**  
**Order Number LMH0394SQ**  
**See NS Package Number SQB16A**

## Pin Descriptions – Pin Mode (non-SPI) / SPI\_EN = GND / LMH0344 Compatible

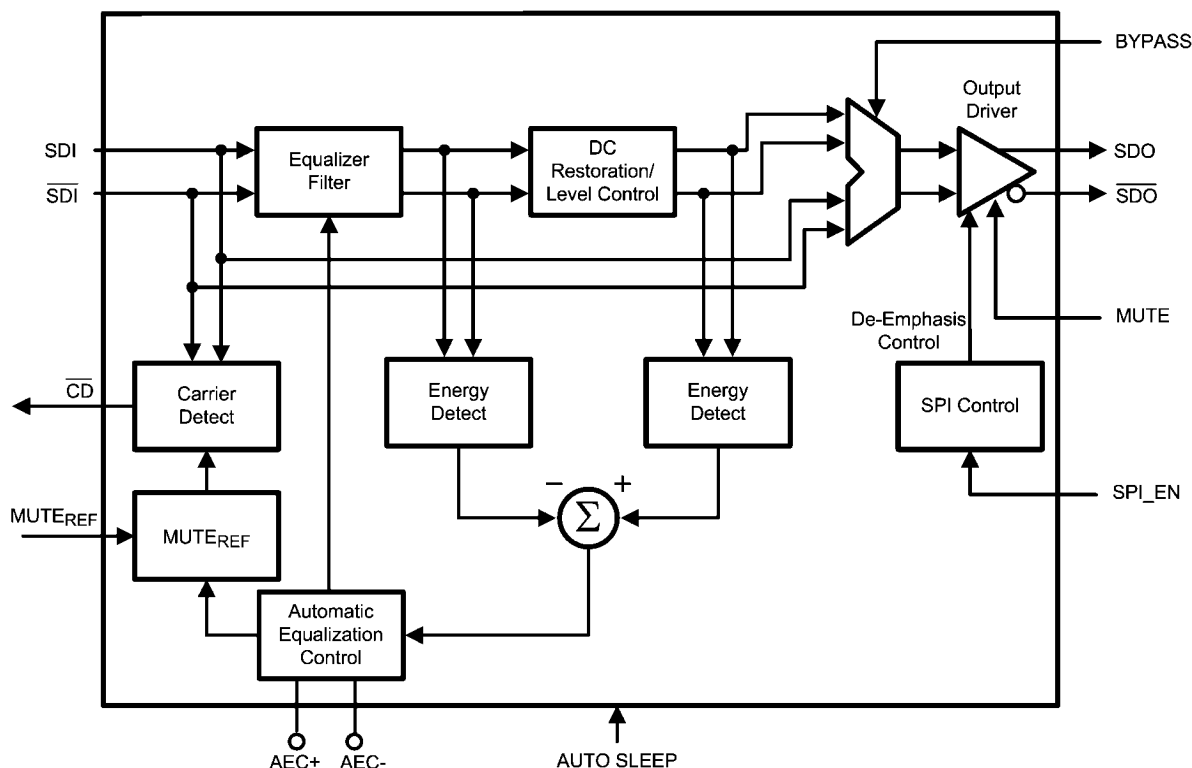
| Pin | Name             | I/O, Type   | Description  |
|-----|------------------|-------------|--|
| 1   | $V_{EE}$         | Ground      | Negative power supply (ground).  |
| 2   | SDI              | I, SDI      | Serial data true input.  |
| 3   | $\overline{SDI}$ | I, SDI      | Serial data complement input.  |
| 4   | SPI_EN           | I, LVCMOS   | SPI register access enable. This pin has an internal pulldown.<br>H = SPI register access mode.<br>L = Pin mode. |
| 5   | AEC+             | I/O, Analog | AEC loop filter external capacitor (1 $\mu$ F) positive connection (capacitor is optional).                      |
| 6   | AEC-             | I/O, Analog | AEC loop filter external capacitor (1 $\mu$ F) negative connection (capacitor is optional).                      |

| Pin | Name                | I/O, Type | Description   |
|-----|---------------------|-----------|---|
| 7   | BYPASS              | I, LVCMOS | Equalization bypass. This pin has an internal pulldown.<br>H = Equalization is bypassed (no equalization occurs).<br>L = Normal operation.  |
| 8   | MUTE <sub>REF</sub> | I, Analog | Mute reference input. Sets the threshold for $\overline{CD}$ and (with $\overline{CD}$ tied to MUTE) determines the maximum cable to be equalized before muting. MUTE <sub>REF</sub> may be either unconnected or connected to ground for normal $\overline{CD}$ operation. |
| 9   | V <sub>EE</sub>     | I, LVCMOS | Connect this pin to ground or drive it logic low.   |
| 10  | SDO                 | O, LVDS   | Serial data complement output.  |
| 11  | SDO                 | O, LVDS   | Serial data true output.  |
| 12  | AUTO SLEEP          | I, LVCMOS | Auto Sleep. AUTO SLEEP has precedence over MUTE and BYPASS. This pin has an internal pullup.<br>H = Device will power down when no input is detected.<br>L = Normal operation (device will not enter auto power down).  |
| 13  | V <sub>CC</sub>     | Power     | Positive power supply (+2.5V).  |
| 14  | MUTE                | I, LVCMOS | Output mute. $\overline{CD}$ may be tied to this pin to inhibit the output when no input signal is present. MUTE has precedence over BYPASS. This pin has an internal pulldown.<br>H = Outputs forced to a muted state.<br>L = Outputs enabled.                             |
| 15  | $\overline{CD}$     | O, LVCMOS | Carrier detect.<br>H = No input signal detected.<br>L = Input signal detected.  |
| 16  | V <sub>CC</sub>     | Power     | Positive power supply (+2.5V).  |
| DAP | V <sub>EE</sub>     | Ground    | Connect exposed DAP to negative power supply (ground).  |

## Pin Descriptions – SPI Mode / SPI\_EN = V<sub>CC</sub>

| Pin | Name                  | I/O, Type   | Description   |
|-----|-----------------------|-------------|---|
| 1   | V <sub>EE</sub>       | Ground      | Negative power supply (ground).   |
| 2   | SDI                   | I, SDI      | Serial data true input.   |
| 3   | $\overline{SDI}$      | I, SDI      | Serial data complement input.   |
| 4   | SPI_EN                | I, LVCMOS   | SPI register access enable. This pin has an internal pulldown.<br>H = SPI register access mode.<br>L = Pin mode.  |
| 5   | AEC+                  | I/O, Analog | AEC loop filter external capacitor (1μF) positive connection (capacitor is optional).   |
| 6   | AEC-                  | I/O, Analog | AEC loop filter external capacitor (1μF) negative connection (capacitor is optional).   |
| 7   | $\overline{CD}$       | O, LVCMOS   | Carrier detect.<br>H = No input signal detected.<br>L = Input signal detected.  |
| 8   | MUTE <sub>REF</sub>   | I, Analog   | Mute reference input. Sets the threshold for $\overline{CD}$ and (with $\overline{CD}$ tied to MUTE) determines the maximum cable to be equalized before muting. MUTE <sub>REF</sub> may be either unconnected or connected to ground for normal $\overline{CD}$ operation. |
| 9   | $\overline{SS}$ (SPI) | I, LVCMOS   | SPI slave select. This pin has an internal pullup.  |
| 10  | $\overline{SDO}$      | O, LVDS     | Serial data complement output.  |
| 11  | SDO                   | O, LVDS     | Serial data true output.  |
| 12  | MISO (SPI)            | O, LVCMOS   | SPI Master Input / Slave Output. LMH0394 control data transmit.   |
| 13  | V <sub>CC</sub>       | Power       | Positive power supply (+2.5V).  |
| 14  | SCK (SPI)             | I, LVCMOS   | SPI serial clock input. This pin has an internal pulldown.  |
| 15  | MOSI (SPI)            | I, LVCMOS   | SPI Master Output / Slave Input. LMH0394 control data receive. This pin has an internal pulldown.   |
| 16  | V <sub>CC</sub>       | Power       | Positive power supply (+2.5V).  |
| DAP | V <sub>EE</sub>       | Ground      | Connect exposed DAP to negative power supply (ground).  |

## Block Diagram (Pin Mode)



30101502

## Device Operation

### BLOCK DESCRIPTION

The **Equalizer Filter** block is a multi-stage adaptive filter. If Bypass is high, the equalizer filter is disabled.

The **DC Restoration / Level Control** block receives the differential signals from the equalizer filter block. This block incorporates a self-biasing DC restoration circuit to fully DC restore the signals. If Bypass is high, this function is disabled.

The signals before and after the DC Restoration / Level Control block are used to generate the **Automatic Equalization Control (AEC)** signal. This control signal sets the gain and bandwidth of the equalizer filter.

The **Carrier Detect** block generates the carrier detect signal based on the SDI input and an adjustment from the **Mute Reference** block.

The **SPI Control** block uses the MOSI, MISO, SCK, and SS signals in SPI mode to control the SPI registers. SPI\_EN selects between SPI mode and pin mode. In pin mode, SPI\_EN is driven logic low.

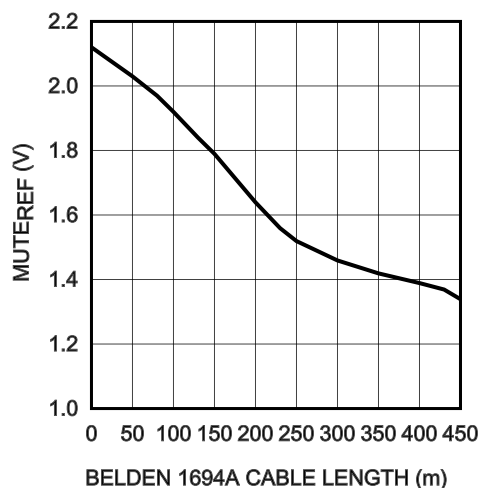
The **Output Driver** produces SDO and SDO-bar.

### MUTE REFERENCE (MUTE<sub>REF</sub>)

The mute reference sets the threshold for CD and (with CD tied to MUTE) determines the amount of cable to equalize before automatically muting the outputs. This is set by applying a voltage inversely proportional to the length of cable to equalize. The applied voltage must be greater than the MUTE<sub>REF</sub> floating voltage (typically 1.3V) in order to change the CD threshold. As the applied MUTE<sub>REF</sub> voltage is increased, the amount of cable that can be equalized before

carrier detect is de-asserted and the outputs are muted is decreased. MUTE<sub>REF</sub> may be left unconnected or connected to ground for normal CD operation. Optionally, the LMH0394 allows the mute reference to be set digitally via SPI register 03h.

Figure 4 shows the minimum MUTE<sub>REF</sub> input voltage required to force carrier detect to inactive vs. Belden 1694A cable length. The results shown are valid for Belden 1694A cable lengths of 0-200m at 2.97 Gbps, 0-220m at 1.485 Gbps, and 0-450m at 270 Mbps.



30101512

FIGURE 4. MUTE<sub>REF</sub> vs. Belden 1694A Cable Length



## CARRIER DETECT ( $\overline{CD}$ ) AND MUTE

Carrier detect  $\overline{CD}$  indicates if a valid signal is present at the LMH0394 input. This signal is logical OR operation of the internal energy detector and MUTE<sub>REF</sub> setting (if used). The internal energy detector detects energy across different data rates. If MUTE<sub>REF</sub> is used, the carrier detect threshold will be altered accordingly.  $\overline{CD}$  provides a high voltage when no signal is present at the LMH0394 input.  $\overline{CD}$  is low when a valid input signal is detected.

MUTE can be used to manually mute or enable SDO and  $\overline{SDO}$ . Applying a high input to MUTE will mute the LMH0394 outputs by forcing the output to a logic 1. Applying a low input will force the outputs to be active.

In pin mode,  $\overline{CD}$  and MUTE may be tied together to automatically mute the output when no input signal is present.

## AUTO SLEEP

The auto sleep mode allows the LMH0394 to power down when no input signal is detected. If the AUTO SLEEP pin is set high, the LMH0394 goes into a deep power save mode when no signal is detected. The device powers on again once an input signal is detected. The auto sleep functionality can be turned off by setting AUTO SLEEP low or tying this pin to ground. An additional auto sleep setting available in SPI mode can be used to force the equalizer to power down regardless of whether there is an input signal or not. Auto sleep has precedence over mute and bypass modes.

In auto sleep mode, the time to power down the equalizer when the input signal is removed is less than 200  $\mu$ s and should not have any impact on the system timing requirements. The device will wake up automatically once an input signal is detected, and the delay between signal detection and full functionality of the equalizer is negligible (about 5 ms). The overall system will be limited only by the settling time constant of the equalizer adaptation loop.

## INPUT INTERFACING

The LMH0394 accepts either differential or single-ended input. The input must be AC coupled. The [Typical Application \(Pin Mode\)](#) diagram on the front page shows the typical configuration for a single-ended input. The unused input must be properly terminated as shown.

The LMH0394 can be optimized for different launch amplitudes via the SPI (see [LAUNCH AMPLITUDE OPTIMIZATION](#) in the [SPI Register Access](#) section).

The LMH0394 correctly handles equalizer pathological signals for standard definition and high definition serial digital video, as described in SMPTE RP 178 and RP 198, respectively.

## OUTPUT INTERFACING

SDO and  $\overline{SDO}$  together are internally terminated 100 $\Omega$  LVDS outputs. These outputs can be DC coupled to most common differential receivers.

The default output common mode voltage ( $V_{OS}$ ) is 1.2V. The output common mode voltage may be adjusted via the SPI in 200 mV increments, from 0.8V to 1.2V (see [OUTPUT DRIVER ADJUSTMENTS AND DE-EMPHASIS SETTING](#) in the [SPI Register Access](#) section). When the output common mode is supply referenced, the common mode voltage is about 1.35V (for 700 mV<sub>P-P</sub> differential swing). This adjustable output common mode voltage offers flexibility for interfacing to many types of receivers.

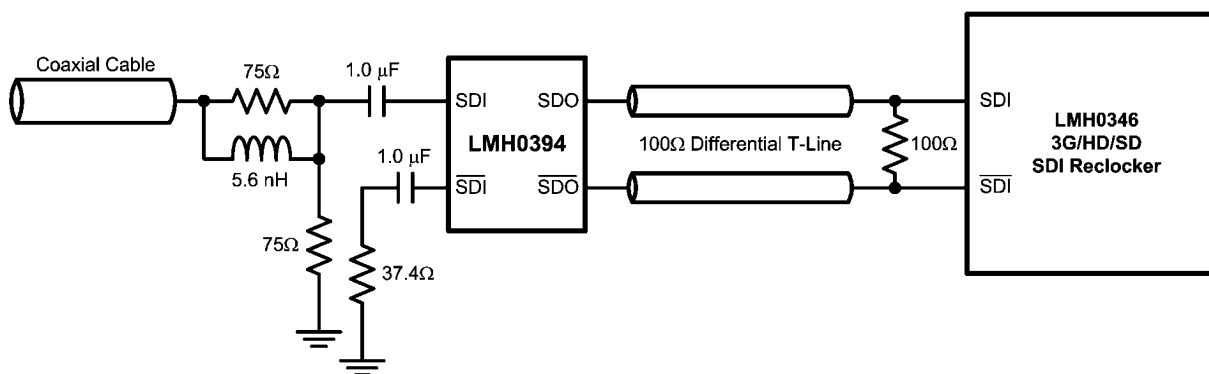
The default differential output swing ( $V_{SSP-P}$ ) is 700 mV<sub>P-P</sub>. The differential output swing may be adjusted via the SPI. Valid options are 400, 600, 700, or 800 mV<sub>P-P</sub> (see [OUTPUT DRIVER ADJUSTMENTS AND DE-EMPHASIS SETTING](#) in the [SPI Register Access](#) section).

The LMH0394 output should be DC coupled to the input of the receiving device as long as the common mode ranges of both devices are compatible. 100 $\Omega$  differential transmission lines should be used to connect between the LMH0394 outputs and the input of the receiving device where possible. [Figure 5](#) shows an example of a DC-coupled interface between the LMH0394 and LMH0346 SDI reclocker. All that is required is the 100 $\Omega$  differential termination as shown. The resistor should be placed as close as possible to the LMH0346 input. If desired, this network may be terminated with two 50 $\Omega$  resistors and a center tap capacitor to ground in place of the signal 100 $\Omega$  resistor.

[Figure 6](#) shows an example of a DC-coupled interface between the LMH0394 and LMH0356 SDI reclocker. The LMH0356 inputs have 50 $\Omega$  internal terminations (100 $\Omega$  differential) to terminate the transmission line, so no additional components are required.

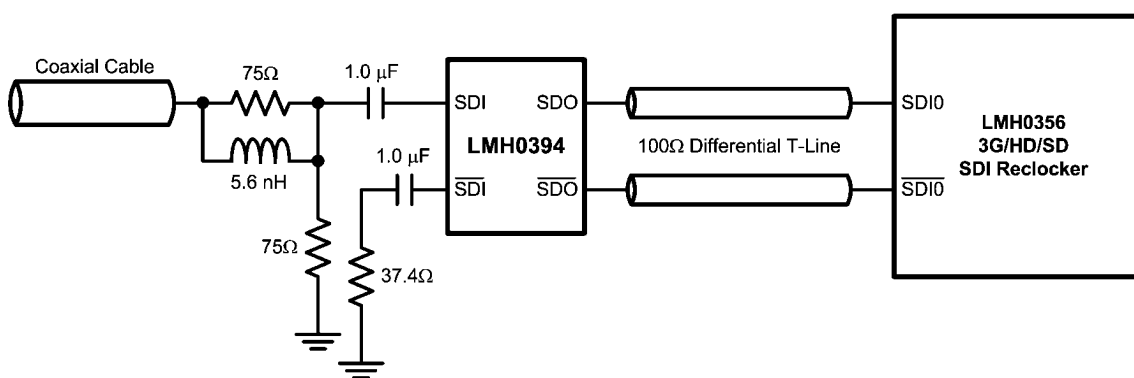
The LMH0394 may be AC coupled to the receiving device when necessary. For example, the LMH0394 outputs are not strictly compatible with 2.5V CML and thus should not be connected via 50 $\Omega$  resistors to 2.5V. If the input common mode range of the receiving device is not compatible with the output common mode range of the LMH0394, then AC coupling is required. Following the AC coupling capacitors, the signal may have to be biased at the input of the receiving device.

The LMH0394 output driver is equipped with programmable output de-emphasis to minimize inter-symbol interference caused by the loss dispersion from driving signals across PCB traces (see [OUTPUT DRIVER ADJUSTMENTS AND DE-EMPHASIS SETTING](#) in the [SPI Register Access](#) section). De-emphasis works with all combinations of output common mode voltage and output voltage swing settings to support DC coupling to the receiving device.



30101518

FIGURE 5. DC Output Interface to LMH0346 Reclocker



30101516

FIGURE 6. DC Output Interface to LMH0356 Reclocker

## SPI Register Access

Setting SPI\_EN high enables the optional SPI register access mode. In SPI mode, the LMH0394 provides register access to all of its features along with a cable length indicator, programmable output de-emphasis, programmable output common mode voltage and swing, digital MUTE<sub>REF</sub>, and launch amplitude optimization. There are eight supported 8-bit registers in the device (see Table 1). The LMH0394 supports SPI daisy-chaining among an unlimited number of LMH0394 devices. With SPI\_EN set low, the device operates in pin mode and is footprint compatible with the LMH0384, LMH0344, LMH0044, and LMH0074.

### SPI Transaction Overview

Each SPI transaction to a single device is 16-bits long. The transaction is initiated by driving  $\overline{SS}$  low, and completed by returning  $\overline{SS}$  high. The 16-bit MOSI payload consists of the read/write command ("1" for reads and "0" for writes), the seven address bits of the device register (MSB first), and the eight data bits (MSB first). The LMH0394 MOSI input data is latched on the rising edge of SCK, and the MISO output data is sourced on the falling edge of SCK.

In order to facilitate daisy-chaining, the prior SPI command, address, and data are shifted out on the MISO output as the current command, address, and data are shifted in on the MOSI input. For SPI writes, the MISO output is typically ignored as "Don't Care" data. For SPI reads, the MISO output

provides the requested read data (after 16 periods of SCK). The MISO output is active when  $\overline{SS}$  is low, and tri-stated when  $\overline{SS}$  is high.

### SPI Write

The SPI write is shown in Figure 2. The SPI write is 16 bits long. The 16-bit MOSI payload consists of a "0" (write command), seven address bits, and eight data bits. The  $\overline{SS}$  signal is driven low, and the 16 bits are sent to the LMH0394's MOSI input. After the SPI write,  $\overline{SS}$  must return high. The prior SPI command, address, and data shifted out on the MISO output during the SPI write is shown as "Don't Care" on the MISO output in Figure 2.

### SPI Read

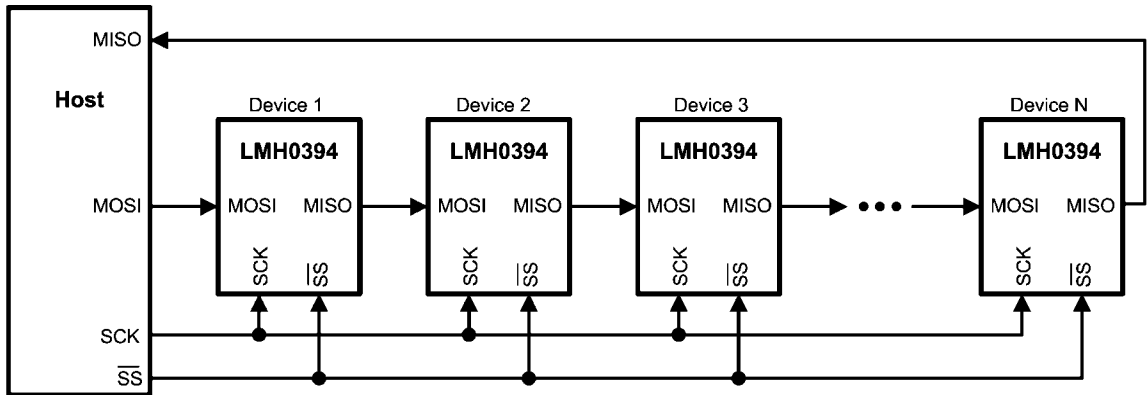
The SPI read is shown in Figure 3. The SPI read is 32 bits long, consisting of a 16-bit read transaction followed by a 16-bit dummy read transaction to shift out the read data on the MISO output. The first 16-bit MOSI payload consists of a "1" (read command), seven address bits, and eight "1"s which are ignored. The second 16-bit MOSI payload consists of 16 "1"s which are ignored but necessary in order to shift out the requested read data on the MISO output. The  $\overline{SS}$  signal is driven low, and the first 16 bits are sent to the LMH0394's MOSI input. The prior SPI command, address, and data are shifted out on the MISO output during the first 16-bit transaction, and are typically ignored (this is shown as "Don't Care" on the MISO output in Figure 3).  $\overline{SS}$  must return high and then is driven low again before the second 16 bits (all "1"s) are sent

to the LMH0394's MOSI input. Once again, the prior SPI command, address, and data are shifted out on the MISO output, but this data now includes the requested read data. The read data is available on the MISO output during the second 8 bits of the 16-bit dummy read transaction, as shown by D7-D0 in [Figure 3](#).

### SPI Daisy-Chain Operation

The LMH0394 SPI controller supports daisy-chaining the serial data between an unlimited number of LMH0394 devices.

Each LMH0394 device is directly connected to the SCK and  $\overline{SS}$  pins on the host. However, only the first LMH0394 device in the chain is connected to the host's MOSI pin, and only the last device in the chain is connected to the host's MISO pin. The MISO pin of each intermediate LMH0394 device in the chain is connected to the MOSI pin of the next LMH0394 device, creating a serial shift register. This daisy-chain architecture is shown in [Figure 7](#).



30101520

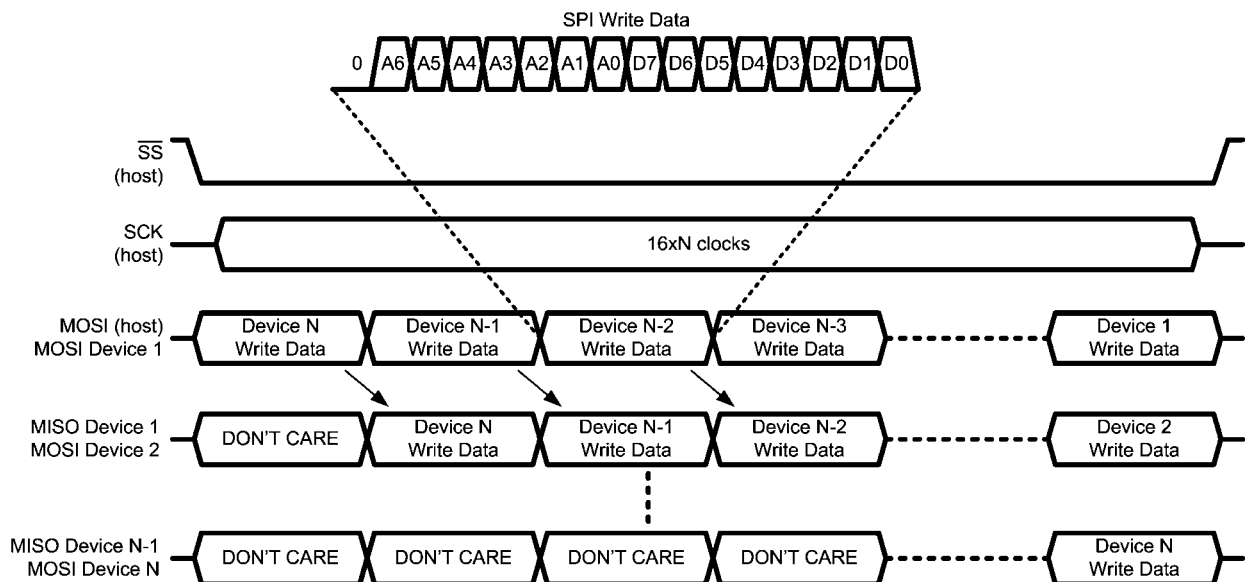
FIGURE 7. SPI Daisy Chain System Architecture

In a daisy-chain configuration of N LMH0394 devices, the host conceptually sees a shift register of length  $16 \times N$ . Therefore the length of SPI transactions (as previously described) is  $16 \times N$  bits, and  $\overline{SS}$  must be asserted for  $16 \times N$  clock cycles for each SPI transaction.

### SPI Daisy-Chain Write

[Figure 8](#) shows the SPI daisy-chain write for a daisy-chain of N devices. The  $\overline{SS}$  signal is driven low and SCK is toggled for  $16 \times N$  clocks. The  $16 \times N$  bit MOSI payload (sent to Device 1 in

the daisy-chain) consists of the 16-bit SPI write data for Device N (the last device in the chain), followed by the write data for Device N-1, Device N-2, etc., ending with the write data for Device 1 (the first device in the chain). The 16-bit SPI write data for each device consists of a "0" (write command), seven address bits, and eight data bits. After the SPI daisy-chain write,  $\overline{SS}$  must return high and then the write occurs for all devices in the daisy-chain.



30101525

FIGURE 8. SPI Daisy-Chain Write

## SPI Daisy-Chain Read

Figure 9 shows the SPI daisy-chain read for a daisy-chain of N devices. The SPI daisy-chain read is  $32 \times N$  bits long, consisting of  $16 \times N$  bits for the read transaction followed by  $16 \times N$  bits for the dummy read transaction (all “1”s) to shift out the read data on the MISO output. The  $\overline{SS}$  signal is driven low and SCK is toggled for  $16 \times N$  clocks. The first  $16 \times N$  bit MOSI payload (sent to Device 1 in the daisy-chain) consists of the 16-bit SPI read data for Device N (the last device in the chain), followed by the read data for Device N-1, Device N-2, etc.,

ending with the read data for Device 1 (the first device in the chain). The 16-bit SPI read data for each device consists of a “1” (read command), seven address bits, and eight “1”s (which are ignored). After the first  $16 \times N$  bit transaction,  $\overline{SS}$  must return high (to latch the data) and then is driven low again before the second  $16 \times N$  bit transaction of all “1”s is sent to the MOSI input. The requested read data is shifted out on MISO starting with the data for Device N and ending with the data for Device 1. After this transaction,  $\overline{SS}$  must return high.

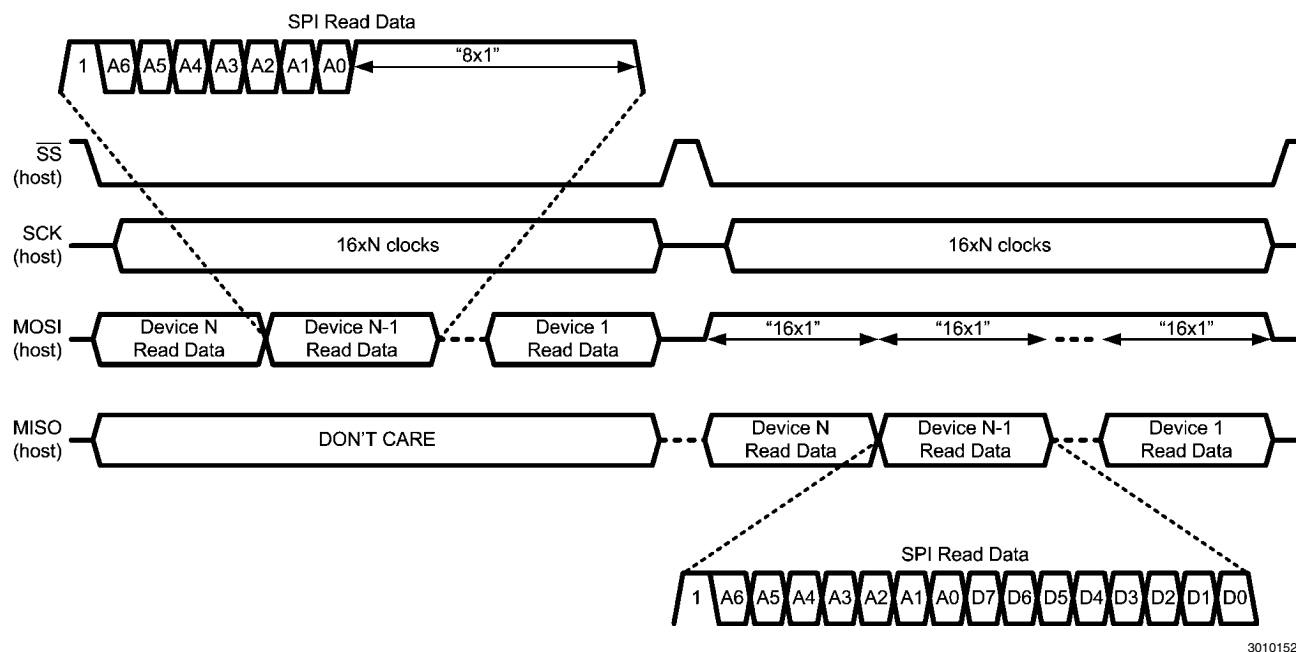


FIGURE 9. SPI Daisy-Chain Read

## SPI Daisy-Chain Read and Write Example

The following example further clarifies LMH0394 SPI daisy-chain operation. Assume a daisy-chain of three LMH0394 devices (Device 1, Device 2, and Device 3), with Device 1 as the first device in the chain and Device 3 as the last device in the chain, as shown by the first three devices in Figure 7. Since there are three devices in the daisy-chain, each SPI transaction is 48-bits long.

This example shows an SPI operation combining SPI reads and writes in order to accomplish the following three tasks:

1. Write 0x22 to register 0x01 of Device 1 in order to set the output swing to 400 mV<sub>P-P</sub>.
2. Read the contents of register 0x00 of Device 2.
3. Write 0x10 to register 0x00 of Device 3 in order to force the sleep mode.

Figure 10 shows the two 48-bit SPI transactions required to complete these tasks (the bits are shifted in left to right).

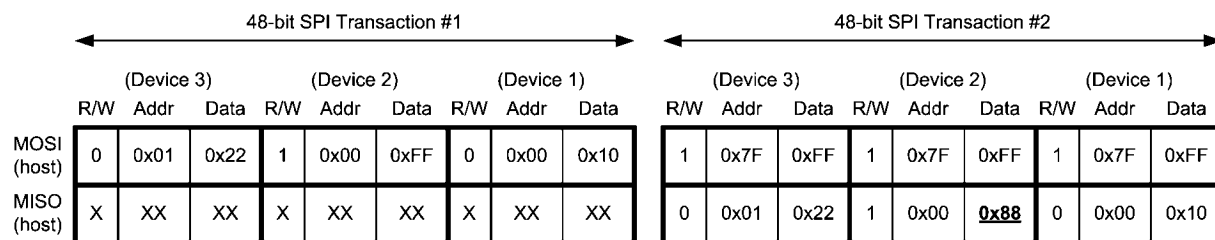


FIGURE 10. SPI Daisy-Chain Read and Write Example

The following occurs at the end of the first transaction:

1. Write 0x22 to register 0x01 of Device 1.
2. Latch the data from register 0x00 of Device 2.
3. Write 0x10 to register 0x00 of Device 3.

In the second transaction, three dummy reads (each consisting of 16 “1”s) are shifted in, and the read data from Device 2 (with value 0x88) appears on MISO in the 25th through 32nd clock cycles.

#### SPI Daisy-Chain Length Detection

A useful operation for the host may be to detect the length of the daisy-chain. This is a simple matter of shifting in a series

of dummy reads with a known data value (such as 0x5A). For an SPI daisy-chain of N LMH0394 devices, the known data value will appear on the host's MISO pin after N+1 writes. Assuming a daisy-chain of three LMH0394 devices, the result of this operation is shown in [Figure 11](#).

|             | R/W | Addr | Data | R/W | Addr | Data | R/W | Addr | Data | R/W | Addr | Data |
|-------------|-----|------|------|-----|------|------|-----|------|------|-----|------|------|
| MOSI (host) | 1   | 0x7F | 0x5A | 1   | 0x7F | 0x5A | 1   | 0x7F | 0x5A | 1   | 0x7F | 0x5A |
| MISO (host) | X   | XX   | XX   | X   | XX   | XX   | X   | XX   | XX   | 1   | 0x7F | 0x5A |

30101529

FIGURE 11. SPI Daisy-Chain Length Detection

#### OUTPUT DRIVER ADJUSTMENTS AND DE-EMPHASIS SETTING

The output driver swing (amplitude), offset voltage (common mode voltage), and de-emphasis level are adjustable via SPI register 01h.

The output swing is adjustable via bits [7:6] of SPI register 01h. The default value for these register bits is “10” for a peak to peak differential output voltage of 700 mV<sub>P-P</sub>. The output swing can be set for 400 mV<sub>P-P</sub>, 600 mV<sub>P-P</sub>, 700 mV<sub>P-P</sub>, or 800 mV<sub>P-P</sub>.

The offset voltage is adjustable via bits [5:4] of SPI register 01h. The default value for these register bits is “10” for an output offset of 1.2V. The output common mode voltage may be adjusted in 200 mV increments, from 0.8V to 1.2V. It can be set to “11” for the maximum offset voltage. At this maximum offset voltage setting, the outputs are referenced to the positive supply and the offset voltage is around 1.35V.

The output de-emphasis is turned on or off by bit 3 of SPI register 01h, and the de-emphasis level is set by bits [2:1] of SPI register 01h. The output de-emphasis level may be set for 0 dB (for driving up to 10” FR4), 3 dB (for driving 10-20” FR4), 5 dB (for driving 20-30” FR4), or 7 dB (for driving 30-40” FR4).

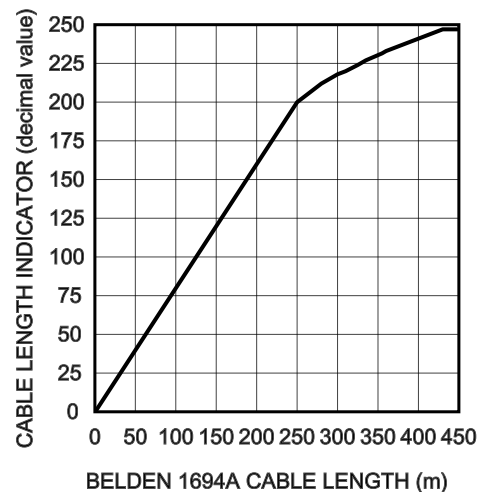
#### LAUNCH AMPLITUDE OPTIMIZATION

The LMH0394 can compensate for attenuation of the input signal prior to the equalizer. This compensation is useful for applications with a passive splitter at the equalizer input or a non-ideal input termination network, and is controlled by SPI register 02h.

Bit 7 of SPI register 02h is used for the launch amplitude setting. At the default setting of “0”, the LMH0394 operates normally and expects a launch amplitude of 800 mV<sub>P-P</sub>. Bit 7 may be set to “1” to optimize the LMH0394 for input signals with 6 dB of attenuation (400 mV<sub>P-P</sub>).

#### CABLE LENGTH INDICATOR (CLI)

The cable length indicator (CLI) provides an indication of the length of the cable attached to input. CLI is accessible via bits [7:0] of SPI register 06h. The 8-bit setting ranges in decimal value from 0 to 247 (“00000000” to “11110111” binary), corresponding to 0 to 450m of Belden 1694A cable. CLI is 1.25m per step from 0 to 191 decimal, and 3.75m per step from 192 to 247 decimal. CLI is valid for Belden 1694A cable lengths of 0-200m at 2.97 Gbps, 0-220m at 1.485 Gbps, and 0-450m at 270 Mbps. Note: Given the continuous adaptive nature of the equalizer, this setting changes by some steps constantly.



30101513

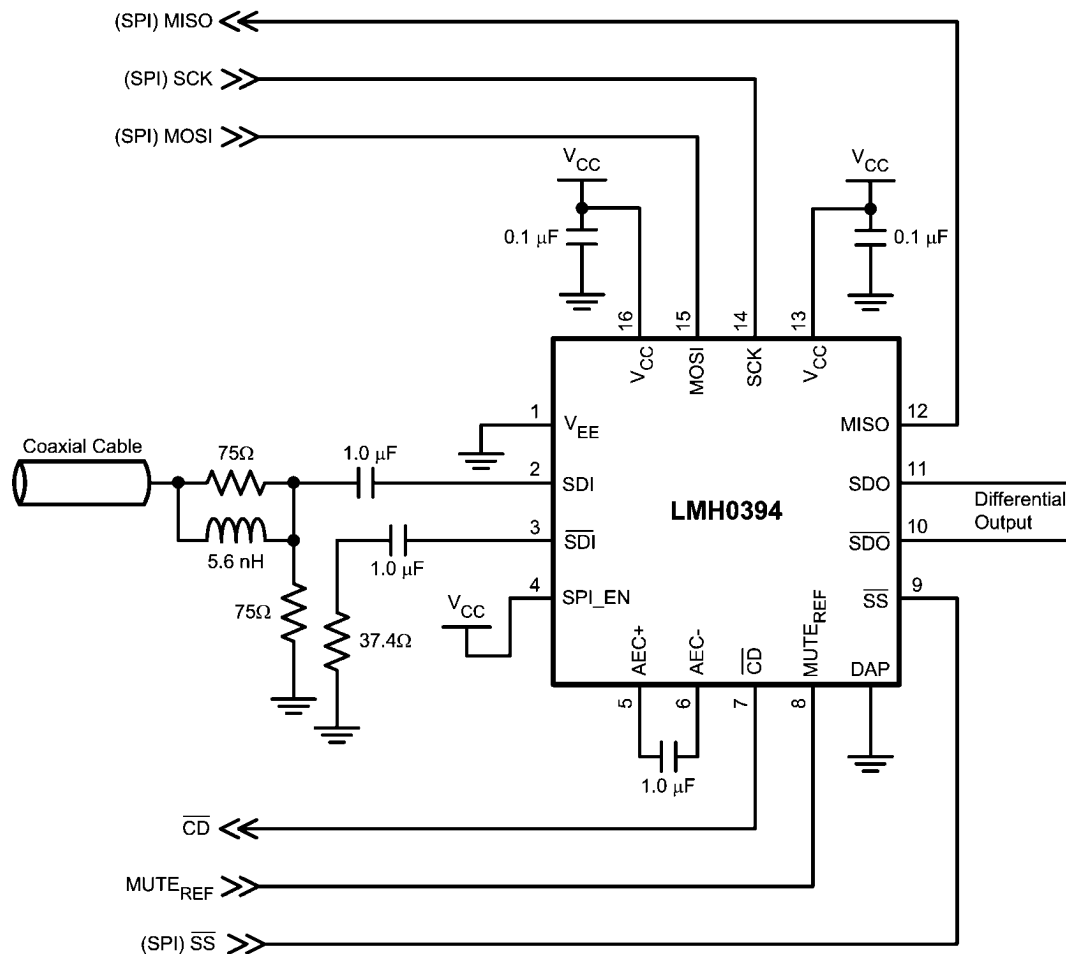
FIGURE 12. CLI vs. Belden 1694A Cable Length

## Application Information

### APPLICATION CIRCUIT (SPI MODE)

Figure 13 shows the application circuit for the LMH0394 in SPI mode. (Note: The application circuit shows an external

capacitor connected between the AEC+ and AEC- pins as commonly configured in legacy equalizers. This capacitor is optional and not necessary for the LMH0394; the AEC+ and AEC- pins may be left unconnected with no change in performance.)



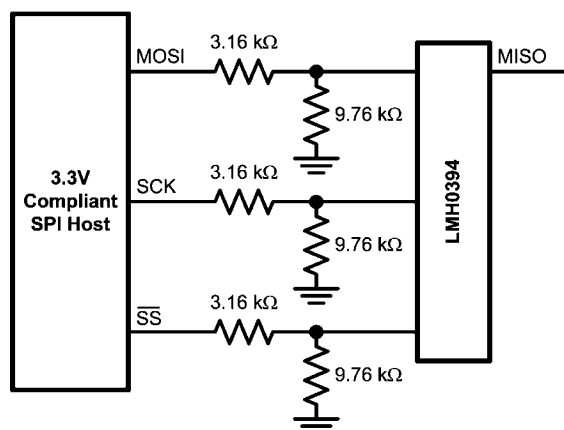
30101517

FIGURE 13. Application Circuit (SPI Mode)

### INTERFACING TO 3.3V SPI

The LMH0394 may be controlled via optional SPI register access. The LMH0394 SPI pins support 2.5V LVCMOS logic levels and are compliant with JEDEC JESD8-5 (see [DC Electrical Characteristics](#)). Care must be taken when interfacing the SPI pins to other voltage levels.

The 2.5V LMH0394 SPI pins may be interfaced to a 3.3V compliant SPI host by using a voltage divider or level translator. One implementation is a simple resistive voltage divider as shown in Figure 14.



30101530

FIGURE 14. 3.3V SPI Interfacing

### PCB LAYOUT RECOMMENDATIONS

For information on layout and soldering of the LLP package, please refer to the following application note: **AN-1187, “Leadless Leadframe Package (LLP).”**

The SMPTE 424M, 292M, and 259M standards have stringent requirements for the input return loss of receivers, which essentially specify how closely the input must resemble a 75Ω network. Any non-idealities in the network between the BNC and the equalizer will degrade the input return loss. Care must be taken to minimize impedance discontinuities between the BNC and the equalizer to ensure that the characteristic impedance of this trace is 75Ω. Please consider the following PCB recommendations:

- Use surface mount components, and use the smallest components available. In addition, use the smallest size component pads.
- Select trace widths that minimize the impedance mismatch between the BNC and the equalizer.
- Select a board stack up that supports both 75Ω single-ended traces and 100Ω loosely-coupled differential traces.
- Place return loss components closest to the equalizer input pins.
- Maintain symmetry on the complimentary signals.
- Route 100Ω traces uniformly (keep trace widths and trace spacing uniform along the trace).
- Avoid sharp bends in the signal path; use 45° or radial bends.
- Place bypass capacitors close to each power pin, and use the shortest path to connect equalizer power and ground pins to the respective power or ground planes.
- Remove ground plane under input/output components to minimize parasitic capacitance.

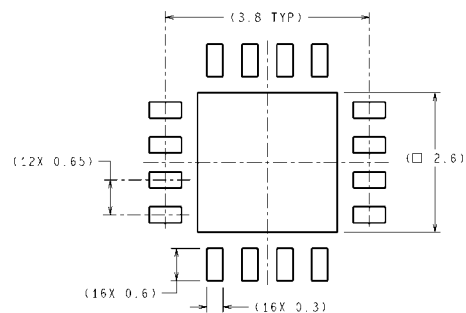
## SPI Registers

TABLE 1. SPI Registers

| Address | R/W | Name                     | Bits | Field                       | Default | Description   |
|---------|-----|--------------------------|------|-----------------------------|---------|---|
| 00h     | R/W | General Control          | 7    | Carrier Detect              |         | Read only.<br>0: No carrier detected.<br>1: Carrier detected.   |
|         |     |                          | 6    | Mute                        | 0       | Mute has precedence over Bypass.<br>0: Normal operation.<br>1: Outputs muted.   |
|         |     |                          | 5    | Bypass                      | 0       | 0: Normal operation.<br>1: Equalizer bypassed.  |
|         |     |                          | 4:3  | Sleep Mode                  | 01      | Sleep mode control. Sleep has precedence over Mute and Bypass.<br>00: Disable sleep mode (force equalizer to stay enabled).<br>01: Sleep mode active when no input signal detected.<br>10: Force equalizer into sleep mode (powered down) regardless of whether there is an input signal or not.<br>11: Reserved. |
|         |     |                          | 2    | Reserved                    | 0       | Reserved as 0. Always write 0 to this bit.  |
|         |     |                          | 1    | Master Reset                | 0       | Reset registers and state machine. (This bit is self-clearing.)<br>0: Normal operation.<br>1: Reset registers and state machine.  |
|         |     |                          | 0    | Acquisition Reset           | 0       | Reset state machine. (This bit is self-clearing.)<br>0: Normal operation.<br>1: Reset state machine.  |
| 01h     | R/W | Output Driver            | 7:6  | Output Swing                | 10      | Output driver swing ( $V_{SSP-P}$ ).<br>00: $V_{SSP-P} = 400 \text{ mV}_{P-P}$ .<br>01: $V_{SSP-P} = 600 \text{ mV}_{P-P}$ .<br>10: $V_{SSP-P} = 700 \text{ mV}_{P-P}$ .<br>11: $V_{SSP-P} = 800 \text{ mV}_{P-P}$ .  |
|         |     |                          | 5:4  | Offset Voltage              | 10      | Output driver offset voltage (common mode voltage).<br>00: $V_{OS} = 0.8\text{V}$ .<br>01: $V_{OS} = 1.0\text{V}$ .<br>10: $V_{OS} = 1.2\text{V}$ .<br>11: $V_{OS}$ Referenced to positive supply.  |
|         |     |                          | 3    | De-Emphasis                 | 0       | Output driver de-emphasis control.<br>0: De-emphasis disabled.<br>1: De-emphasis enabled.   |
|         |     |                          | 2:1  | De-Emphasis Amplitude Level | 01      | Output drive de-emphasis level.<br>00: 0 dB (no de-emphasis).<br>01: 3 dB de-emphasis.<br>10: 5 dB de-emphasis.<br>11: 7 dB de-emphasis.  |
|         |     |                          | 0    | Reserved                    | 0       | Reserved (read only).   |
| 02h     | R/W | Launch Amplitude Control | 7    | Launch Amplitude Control    | 0       | Launch amplitude optimization setting.<br>0: Normal optimization with no external attenuation (800 $\text{mV}_{P-P}$ launch amplitude).<br>1: Optimized for 6 dB external attenuation (400 $\text{mV}_{P-P}$ launch amplitude).   |
|         |     |                          | 6:0  | Reserved                    | 1101000 | Reserved as 1101000. Always write 1101000 to these bits.  |

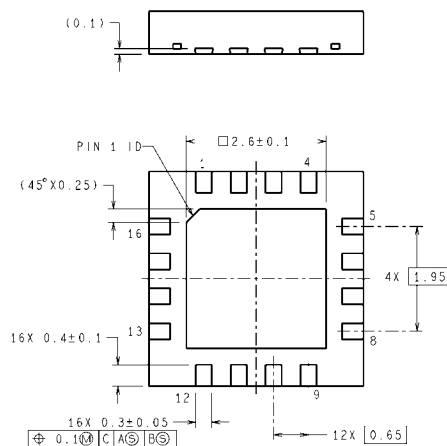
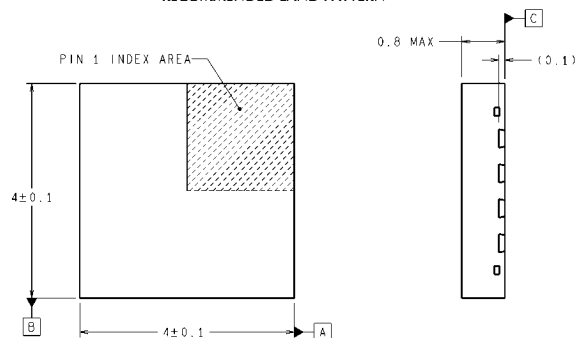


| Address | R/W | Name                        | Bits | Field                               | Default | Description  |
|---------|-----|-----------------------------|------|-------------------------------------|---------|--|
| 03h     | R/W | MUTE <sub>REF</sub>         | 7:6  | Reserved                            | 00      | Reserved as 00. Always write 00 to these bits.   |
|         |     |                             | 5    | MUTE <sub>REF</sub> Mode            | 0       | 0: Use MUTE <sub>REF</sub> pin.<br>1: Use digital MUTE <sub>REF</sub> .  |
|         |     |                             | 4:0  | Digital MUTE <sub>REF</sub> Setting | 1111    | Digital MUTE <sub>REF</sub> (10m per step).<br>00000: Mute when cable (EQ boost) $\geq$ 10m.<br>.....<br>01111: Mute when cable (EQ boost) $\geq$ 160m.<br>.....<br>11111: Never mute.                           |
| 04h     | R   | Device ID                   | 7:6  | Reserved                            | 00      | Reserved.  |
|         |     |                             | 5:4  | EQ ID                               | 01      | 00: LMH0384 device.<br>01: LMH0394 device.<br>10: LMH0395 device.<br>11: Reserved.   |
|         |     |                             | 3:0  | Die Revision                        | 0011    | Die revision.  |
| 05h     | R   | Rate Indicator              | 7:6  | Reserved                            | 00      | Reserved.  |
|         |     |                             | 5    | Rate Indicator                      |         | 0: SD.<br>1: 3G/HD.  |
|         |     |                             | 4:0  | Reserved                            | 11000   | Reserved.  |
| 06h     | R   | Cable Length Indicator      | 7:0  | Cable Length Indicator              |         | Cable Length Indicator (CLI), with 10% accuracy.<br>00000000: Short cable.<br>.....<br>11110111: Maximum cable.<br>11111000: Reserved.<br>.....<br>11111111: Reserved.   |
| 07h     | R   | Launch Amplitude Indication | 7:2  | Launch Amplitude Indication         |         | Indication of launch amplitude: 1% or 0.08 dB per step with 5% accuracy.<br>000000: Nominal -32%.<br>.....<br>011111: Nominal -1%.<br>100000: Nominal.<br>100001: Nominal +1%.<br>.....<br>111111: Nominal +31%. |
|         |     |                             | 1:0  | Reserved                            |         | Reserved.  |



**DIMENSIONS ARE IN MILLIMETERS**  
DIMENSIONS IN ( ) FOR REFERENCE ONLY

## RECOMMENDED LAND PATTERN



SQB16A (Rev A)

**16-Pin LLP**  
**Order Number LMH0394SQ**  
**NS Package Number SQB16A**

## Notes

For more National Semiconductor product information and proven design tools, visit the following Web sites at:  
[www.national.com](http://www.national.com)

| Products                       |  | Design Support               |  |
|--------------------------------|--|------------------------------|--|
| Amplifiers                     | <a href="http://www.national.com/amplifiers">www.national.com/amplifiers</a>   | WEBENCH® Tools               | <a href="http://www.national.com/webench">www.national.com/webench</a>             |
| Audio                          | <a href="http://www.national.com/audio">www.national.com/audio</a>             | App Notes                    | <a href="http://www.national.com/appnotes">www.national.com/appnotes</a>           |
| Clock and Timing               | <a href="http://www.national.com/timing">www.national.com/timing</a>           | Reference Designs            | <a href="http://www.national.com/refdesigns">www.national.com/refdesigns</a>       |
| Data Converters                | <a href="http://www.national.com/adc">www.national.com/adc</a>                 | Samples                      | <a href="http://www.national.com/samples">www.national.com/samples</a>             |
| Interface                      | <a href="http://www.national.com/interface">www.national.com/interface</a>     | Eval Boards                  | <a href="http://www.national.com/evalboards">www.national.com/evalboards</a>       |
| LVDS                           | <a href="http://www.national.com/lvds">www.national.com/lvds</a>               | Packaging                    | <a href="http://www.national.com/packaging">www.national.com/packaging</a>         |
| Power Management               | <a href="http://www.national.com/power">www.national.com/power</a>             | Green Compliance             | <a href="http://www.national.com/quality/green">www.national.com/quality/green</a> |
| Switching Regulators           | <a href="http://www.national.com/switchers">www.national.com/switchers</a>     | Distributors                 | <a href="http://www.national.com/contacts">www.national.com/contacts</a>           |
| LDOs                           | <a href="http://www.national.com/ldo">www.national.com/ldo</a>                 | Quality and Reliability      | <a href="http://www.national.com/quality">www.national.com/quality</a>             |
| LED Lighting                   | <a href="http://www.national.com/led">www.national.com/led</a>                 | Feedback/Support             | <a href="http://www.national.com/feedback">www.national.com/feedback</a>           |
| Voltage References             | <a href="http://www.national.com/vref">www.national.com/vref</a>               | Design Made Easy             | <a href="http://www.national.com/easy">www.national.com/easy</a>                   |
| PowerWise® Solutions           | <a href="http://www.national.com/powerwise">www.national.com/powerwise</a>     | Applications & Markets       | <a href="http://www.national.com/solutions">www.national.com/solutions</a>         |
| Serial Digital Interface (SDI) | <a href="http://www.national.com/sdi">www.national.com/sdi</a>                 | Mil/Aero                     | <a href="http://www.national.com/milaero">www.national.com/milaero</a>             |
| Temperature Sensors            | <a href="http://www.national.com/tempsensors">www.national.com/tempsensors</a> | SolarMagic™                  | <a href="http://www.national.com/solarmagic">www.national.com/solarmagic</a>       |
| PLL/VCO                        | <a href="http://www.national.com/wireless">www.national.com/wireless</a>       | PowerWise® Design University | <a href="http://www.national.com/training">www.national.com/training</a>           |

THE CONTENTS OF THIS DOCUMENT ARE PROVIDED IN CONNECTION WITH NATIONAL SEMICONDUCTOR CORPORATION ("NATIONAL") PRODUCTS. NATIONAL MAKES NO REPRESENTATIONS OR WARRANTIES WITH RESPECT TO THE ACCURACY OR COMPLETENESS OF THE CONTENTS OF THIS PUBLICATION AND RESERVES THE RIGHT TO MAKE CHANGES TO SPECIFICATIONS AND PRODUCT DESCRIPTIONS AT ANY TIME WITHOUT NOTICE. NO LICENSE, WHETHER EXPRESS, IMPLIED, ARISING BY ESTOPPEL OR OTHERWISE, TO ANY INTELLECTUAL PROPERTY RIGHTS IS GRANTED BY THIS DOCUMENT.

TESTING AND OTHER QUALITY CONTROLS ARE USED TO THE EXTENT NATIONAL DEEMS NECESSARY TO SUPPORT NATIONAL'S PRODUCT WARRANTY. EXCEPT WHERE MANDATED BY GOVERNMENT REQUIREMENTS, TESTING OF ALL PARAMETERS OF EACH PRODUCT IS NOT NECESSARILY PERFORMED. NATIONAL ASSUMES NO LIABILITY FOR APPLICATIONS ASSISTANCE OR BUYER PRODUCT DESIGN. BUYERS ARE RESPONSIBLE FOR THEIR PRODUCTS AND APPLICATIONS USING NATIONAL COMPONENTS. PRIOR TO USING OR DISTRIBUTING ANY PRODUCTS THAT INCLUDE NATIONAL COMPONENTS, BUYERS SHOULD PROVIDE ADEQUATE DESIGN, TESTING AND OPERATING SAFEGUARDS.

EXCEPT AS PROVIDED IN NATIONAL'S TERMS AND CONDITIONS OF SALE FOR SUCH PRODUCTS, NATIONAL ASSUMES NO LIABILITY WHATSOEVER, AND NATIONAL DISCLAIMS ANY EXPRESS OR IMPLIED WARRANTY RELATING TO THE SALE AND/OR USE OF NATIONAL PRODUCTS INCLUDING LIABILITY OR WARRANTIES RELATING TO FITNESS FOR A PARTICULAR PURPOSE, MERCHANTABILITY, OR INFRINGEMENT OF ANY PATENT, COPYRIGHT OR OTHER INTELLECTUAL PROPERTY RIGHT.

### LIFE SUPPORT POLICY

**NATIONAL'S PRODUCTS ARE NOT AUTHORIZED FOR USE AS CRITICAL COMPONENTS IN LIFE SUPPORT DEVICES OR SYSTEMS WITHOUT THE EXPRESS PRIOR WRITTEN APPROVAL OF THE CHIEF EXECUTIVE OFFICER AND GENERAL COUNSEL OF NATIONAL SEMICONDUCTOR CORPORATION.** As used herein:

Life support devices or systems are devices which (a) are intended for surgical implant into the body, or (b) support or sustain life and whose failure to perform when properly used in accordance with instructions for use provided in the labeling can be reasonably expected to result in a significant injury to the user. A critical component is any component in a life support device or system whose failure to perform can be reasonably expected to cause the failure of the life support device or system or to affect its safety or effectiveness.

National Semiconductor and the National Semiconductor logo are registered trademarks of National Semiconductor Corporation. All other brand or product names may be trademarks or registered trademarks of their respective holders.

Copyright© 2010 National Semiconductor Corporation

For the most current product information visit us at [www.national.com](http://www.national.com)



**National Semiconductor  
Americas Technical  
Support Center**  
Email: [support@nsc.com](mailto:support@nsc.com)  
Tel: 1-800-272-9959

**National Semiconductor Europe  
Technical Support Center**  
Email: [europe.support@nsc.com](mailto:europe.support@nsc.com)

**National Semiconductor Asia  
Pacific Technical Support Center**  
Email: [ap.support@nsc.com](mailto:ap.support@nsc.com)

**National Semiconductor Japan  
Technical Support Center**  
Email: [jpn.feedback@nsc.com](mailto:jpn.feedback@nsc.com)