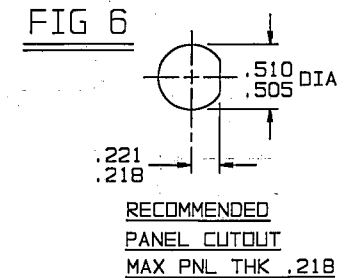
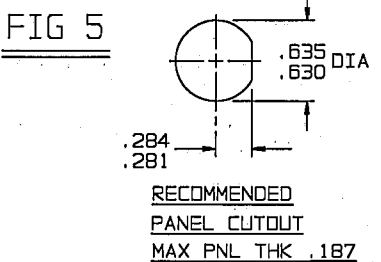
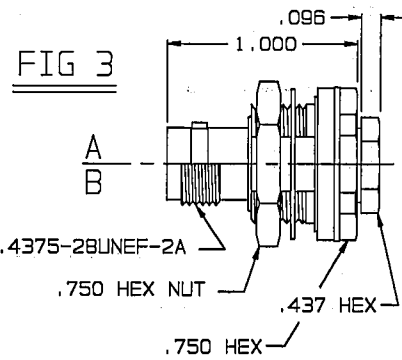
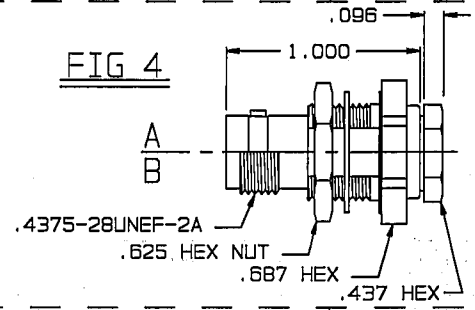
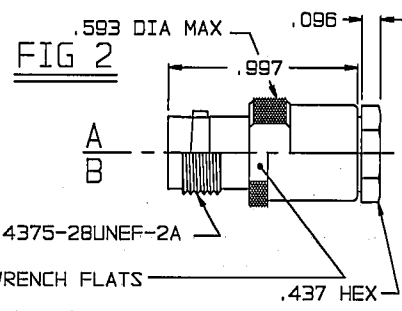
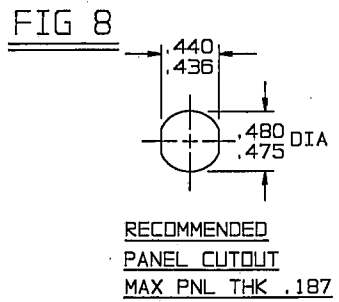
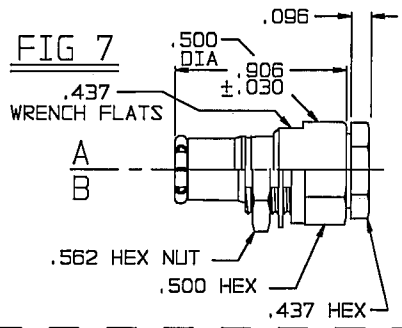
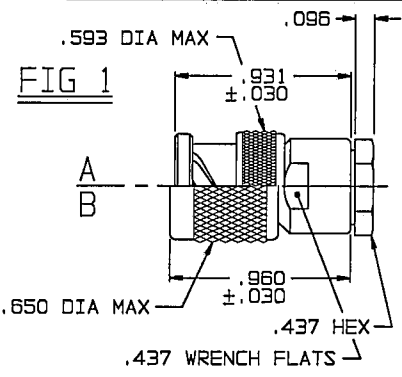


RED INDICATES ORIGINAL

DATA CONTAINED IN THIS DOCUMENT IS PROPRIETARY TO TROMPETER ELECTRONICS, INC. AND SHALL NOT BE DISCLOSED, COPIED OR USED FOR PROCUREMENT OR MANUFACTURE WITHOUT EXPRESS WRITTEN PERMISSION.

REVISIONS			105-1600	SH 1C	
REV	ED	DESCRIPTION	DWN	APPROVED	DATE
B	12598	REVISED NOTE 4; SEE ECD	DKC	WM JZ	11/25/98

DASH NO	CONN TYPE	MATERIAL	ASSEMBLE PER	FIG	MTG HOLE FIG
-1	PL20	1-0369-6	TAI-119	1A	---
-2	CJ20	1-0134-6		2A	---
-3	BJ26	1-0341-6		3A	5
-4	BJ29	1-0126-6		4A	6
-5	PL40	1-0014-6		1B	---
-6	CJ40	1-0135-6		2B	---
-7	BJ46	1-0448-6		3B	5
-8	BJ49	1-0173-6		4B	6
-9	UPL20	1-0369-U6		1A	---
-10	UCJ20	1-0134-U6		2A	---
-11	UBJ26	1-0341-U6		3A	5
-12	UBJ29	1-0126-U6		4A	6
-13	UPL40	1-0014-U6		1B	---
-14	UCJ40	1-0135-U6		2B	---
-15	UBJ46	1-0448-U6		3B	5
-16	UBJ49	1-0173-U6		4B	6
-17	PL123	1-0390-6		7A	---
-18	UPL123	1-0390-U6		7A	---
-19	PL122	1-0431-6		7B	8
-20	UPL122	1-0431-U6		7B	8



4. REPLACE CONE 8-0475-6 WITH CONE 8-0475-2, REPLACE CONE DIELECTRIC 8-0677-U6 WITH CONE DIELECTRIC 8-0677-U2 & REPLACE CLAMP NUT 8-1580-6 WITH CLAMP NUT 8-1848-41
3. 50 & 75 OHM COAXIAL BNC/TNC CABLE PLUGS/ RECEPTACLE/INSULATED & NON-INSULATED BULKHEAD MOUNT RECEPTACLE/PUSH-ON & NON-INSULATED BULKHEAD MOUNT PUSH-ON PLUGS FOR COMM/SCOPE CABLE NO. F59 HEC-2
2. FINISH: TFS-1A (NICKEL)
1. ALL DIM ARE IN INCHES

QTY	DESCRIPTION	PART NUMBER	ITEM
TOL UNLESS SPECIFIED .XX ± .XXX ± .005 .XXXX ± ANGLES ±		TROMPETER ELECTRONICS, INC.	
		20 & 40 SERIES- F59 HEC-2	
DWN	DKC 11-3-98	MATERIAL	CODE IDENT
CHK	WM 11-4-98		14949
ENGR		DRAWING NO.	REV
APPR	JZ 11/25/98	105-1600	B
NEXT ASSY	SCALE	DATE 9-3-98	SHEET 1C