

DO NOT SCALE FROM THIS PRINT

DESIGNED & DIMENSIONED IN MILLIMETERS [INCHES]

MBNC7-P-C-XX-RA-CA3

IMPEDENCE
7: 75 OHM

GENDER
-P: PLUG

TYPE
-C: CABLE

TERMINATION
-CA3: RG179 CABLE

ORIENTATION
-RA: RIGHT ANGLE

PLATING SPECIFICATION **A**
(VALUES GIVEN ARE IN MICRO-INCHES)

-HN: HEAVY GOLD/NICKEL
30 Au / 50 Ni MIN ON CENTER CONTACT
100 Ni MIN OTHER
(SUB-MBNC7-P-C-HN-RA-CA3)
(MBNC7-P-C-N-RA-CAP)
(SMA-FER-001-N)

-GN: GOLD/NICKEL
10 Au / 50 Ni MIN ON CENTER CONTACT
100 Ni MIN OTHER
(SUB-MBNC7-P-C-GN-RA-CA3)
(MBNC7-P-C-N-RA-CAP)
(SMA-FER-001-N)

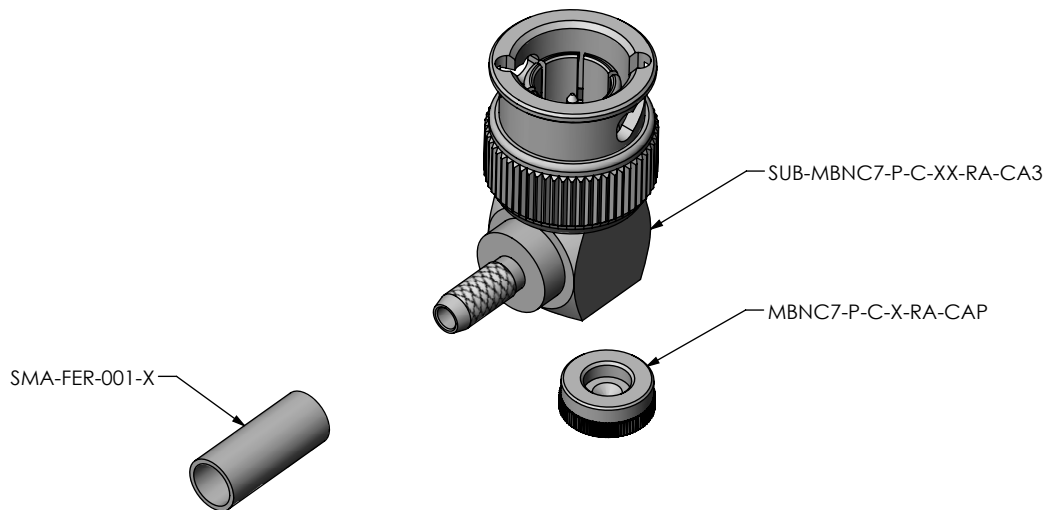
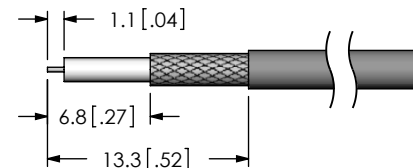


FIG. 1
MBNC7-P-C-XX-RA-CA3 SHOWN

RECOMMENDED CABLE STRIPPING



A

NOTES:

1. **A** REPRESENTS A CRITICAL DIMENSION.
2. PUSHOUT FORCE FOR CENTER CONTACT: 17.79N [4LBS] MIN.
3. SEE SHEET 3 FOR TERMINATION INFORMATION.
4. PRODUCT TO BE PACKAGED PER PACKAGING STANDARD CO-HD-WI-3040-M.
5. NOTE DELETED
6. NOTE DELETED
7. NOTE DELETED

THIS PRODUCT MANUFACTURED WITH LEAD-FREE PROCESSING

UNLESS OTHERWISE SPECIFIED, DIMENSIONS ARE IN MILLIMETERS. TOLERANCES ARE:
DECIMALS ANGLES
X.X: ±0.3 [.01] 2°
X.XX: ±0.13 [.005]
X.XXX: ±0.051 [.0020]

PROPRIETARY NOTE
THIS DOCUMENT CONTAINS INFORMATION CONFIDENTIAL AND PROPRIETARY TO SAMTEC, INC. AND SHALL NOT BE REPRODUCED OR TRANSFERRED TO OTHER DOCUMENTS OR DISCLOSED TO OTHERS OR USED FOR ANY PURPOSE OTHER THAN THAT WHICH IT WAS OBTAINED WITHOUT THE EXPRESSED WRITTEN CONSENT OF SAMTEC, INC.

samtec

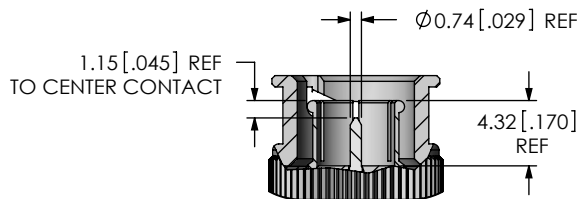
520 PARK EAST BLVD., NEW ALBANY, IN 47150
PHONE: 812-944-6733 FAX: 812-948-5047
e-Mail: info@SAMTEC.com code 55322

MATERIAL: DO NOT SCALE DRAWING SHEET SCALE: 2:1
SHELL, FERRULE, NUT, CAP: BRASS
CONTACT: BRASS
DIELECTRIC: PTFE
GASKET: SILICONE
SPRING: TBD

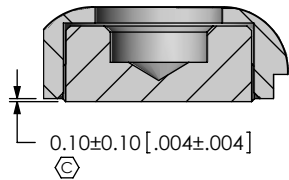
DESCRIPTION:
TRUE 75 OHM, MBNC RA RG179 CABLE PLUG

DWG. NO.
MBNC7-P-C-XX-RA-CA3

BY: ALVIN W 06/18/2010 SHEET 1 OF 2



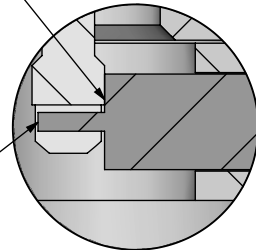
DETAIL 'A'
SCALE 2 : 1



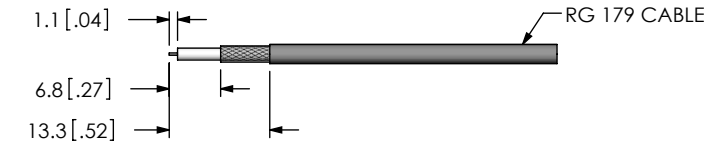
DETAIL 'B'
SCALE 4 : 1

END OF CABLE DIELECTRIC
SHOULD SEAT AGAINST
CONTACT CUP

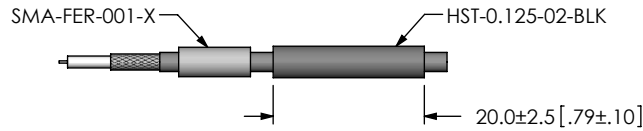
CABLE CENTER CONDUCTOR
SHOULD NOT PROTRUDE
OUTSIDE CONTACT CUP



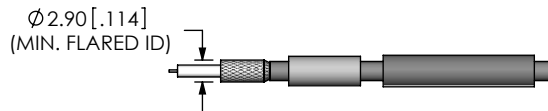
DETAIL 'C'
SCALE 8 : 1



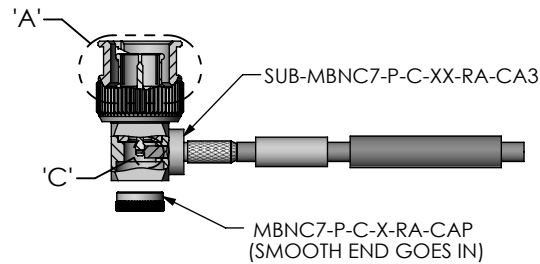
STRIP AND TIN INNER CONDUCTOR



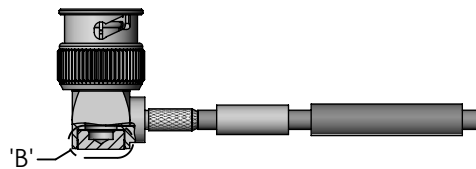
ADD HEAT SHRINK TUBE AND FERRULE



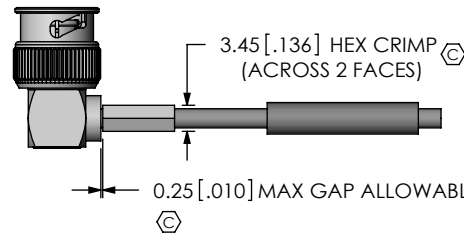
FLARE BRAIDED SHIELD



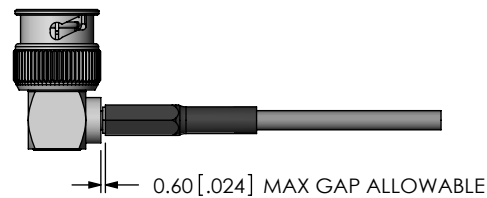
ADD SUB-MBNC7-P-C-XX-RA-CA3 AND SOLDER SIGNAL PIN



INSERT CAP



CRIMP FERRULE
(USE RF CRIMP HAND TOOL # CAT-HT-126667-21 OR EQUIVALENT)
(USE .128" HEX DIE)



APPLY HEAT SHRINK TUBING

CRITICAL DIMENSION INSPECTION INSTRUCTION TABLE

ASSEMBLY OPERATION	START-UP INSPECTION INSPECT CODE A	IN-PROCESS INSPECTION INSPECT CODE B
ASSEMBLY		C1
CRIMPING		C2, C3

PROPRIETARY NOTE
THIS DOCUMENT CONTAINS INFORMATION
CONFIDENTIAL AND PROPRIETARY TO
SAMTEC, INC. AND SHALL NOT BE REPRODUCED OR
DISCLOSED TO OTHERS OR USED FOR ANY
PURPOSE OTHER THAN THAT WHICH IT WAS
OBTAINED WITHOUT THE EXPRESSED WRITTEN
CONSENT OF SAMTEC, INC.

DO NOT SCALE DRAWING

SHEET SCALE: 1:1

samtec

520 PARK EAST BLVD, NEW ALBANY, IN 47150
PHONE: 812-944-6733 FAX: 812-948-5047
e-Mail info@SAMTEC.com code 55322

DESCRIPTION:
TRUE 75 OHM, MBNC RA RG179 CABLE PLUG

DWG. NO.
MBNC7-P-C-XX-RA-CA3

BY: ALVIN W 06/18/2010 SHEET 2 OF 2