

**PRINCIPAL SPECIFICATIONS**

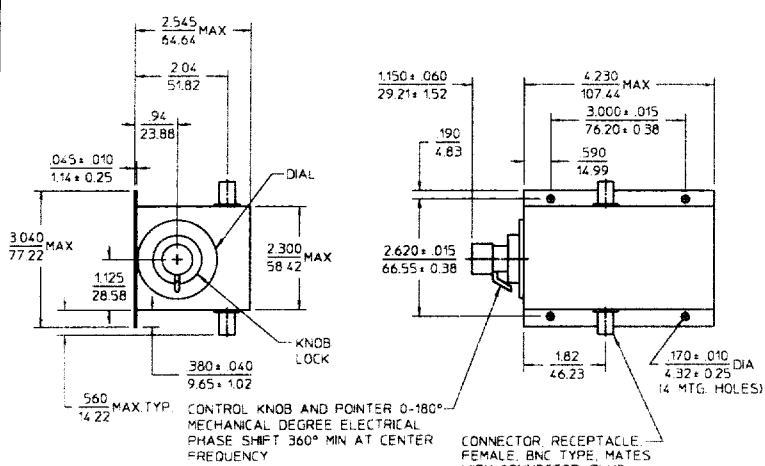
Model Number	Center Frequency, $f_0$ , MHz	Usable Bandwidth
PS-5-***B	5 to 200	$f_0 \pm 5\%$

For complete Model Number replace \*\*\* with desired Center Frequency,  $f_0$  in MHz.

**GENERAL SPECIFICATIONS**

Phase Shift Range: 360° min. @  $f_0$   
 Insertion Loss: 2 dB max.  
 Impedance: 50  $\Omega$  nom.  
 VSWR: 1.75:1 max.  
 CW Power: 1 Watt max.  
 Drive: Knob/Lock  
 Drive Rotation for maximum phase shift: Half-Turn nom.  
 Weight, nominal: 16 oz (455 g)  
 Operating Temp: -55° to +85°C

**Package Outline**



- NOTES:
- 1 Tolerance on 3 place dimensions  $\pm 0.20$  (0.51) except as noted.
  - 2 Insertion loss increases with clockwise rotation of knob.
  - 3 Dimensions in inches over millimeters.
  - 4 Dial is uncalibrated.

**General Notes:**

1. The PS-5 series of manual phase shifters covers the 5 to 200 MHz frequency range providing continuously variable phase shift 0° to 360°. This is accomplished by cascading two 180° shifters for a total of 360°. A lock is provided to avoid unintentionally changing the intended setting.
2. These models employ a pair of lumped element quadrature hybrids with matched pairs of L-C networks acting as sliding short circuits on the outputs. The electrical length of the shorts effectively delays the reflected signal which appears at the isolated ports of the quad hybrids.
3. Merrimac Phase Shifters are designed for high reliability, and can be supplied screened for specific applications.

**Typical Performance**

