

**REVISION D**

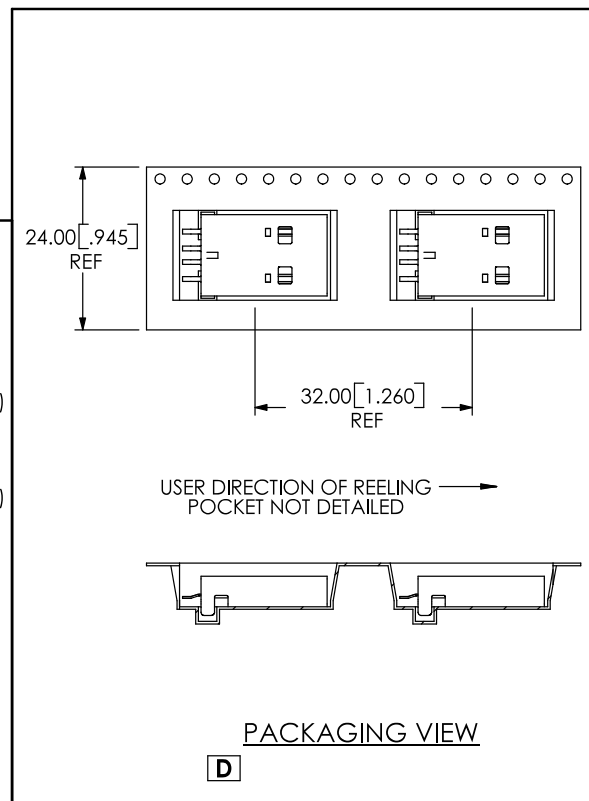
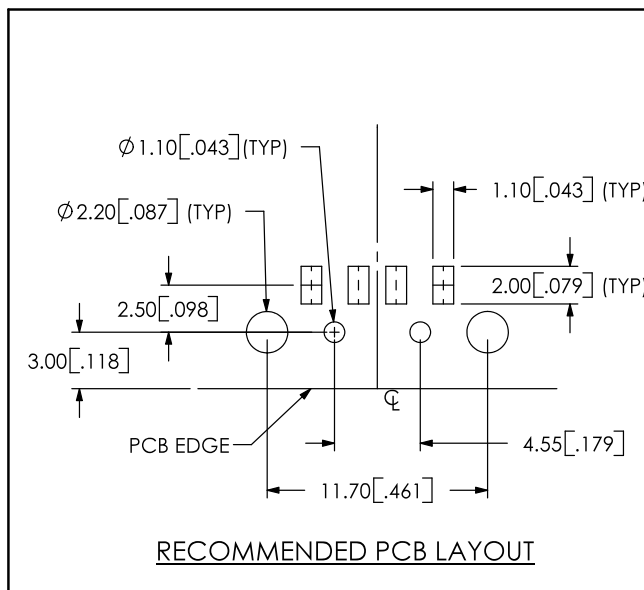
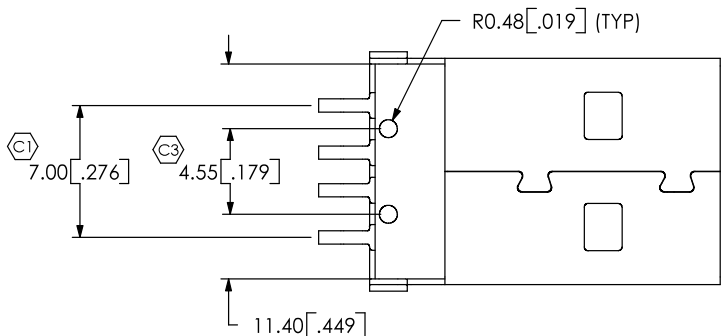
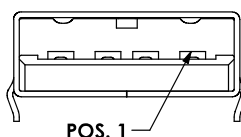
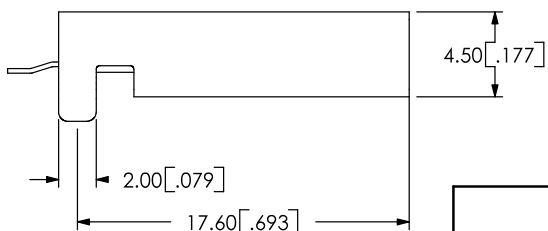
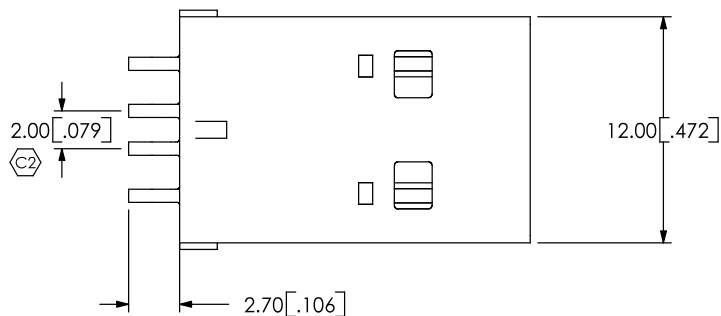
**NOTES:**

1. (C1) REPRESENTS A CRITICAL DIMENSION.
2. DELETED
3. PARTS WITH -R HAVE BRIGHT ACID TIN ON TAILS.

DO NOT SCALE FROM THIS PRINT

**USB-AM-S-X-X-SM1-X-XX [D]**

- TYPE**  
-AM
- CONFIGURATION**  
-S: SINGLE
- PLATING SPECIFICATION**  
-F: GOLD FLASH ON MATING AREA  
TIN-LEAD ON TAILS (Sn:60%, Pb:40%)  
WITH NICKEL UNDERPLATE  
(SEE NOTE 3 FOR -R OPTION)  
-S: SELECTIVE, .000030 GOLD ON MATING AREA  
TIN-LEAD ON TAILS (Sn:60%, Pb:40%)  
WITH NICKEL UNDERPLATE  
(SEE NOTE 3 FOR -R OPTION)
- PACKAGING**  
-TR: TAPE AND REEL OPTION. [D]
- EI OPTION**  
-R: ROHS COMPLIANT
- TERMINATION**  
-SM SURFACE MOUNT
- COLOR**  
-B: BLACK  
-W: WHITE



UNLESS OTHERWISE SPECIFIED, DIMENSIONS ARE IN MM.  
TOLERANCES ARE:  
DECIMALS ANGLES  
.X: ±.3 [.01] 2°  
.XX: ±.13 [.005]  
.XXX: ±.051 [.0020]

**PROPRIETARY NOTE**  
THIS DOCUMENT CONTAINS INFORMATION CONFIDENTIAL AND PROPRIETARY TO SAMTEC, INC. AND SHALL NOT BE REPRODUCED OR TRANSFERRED TO OTHER DOCUMENTS OR DISCLOSED TO OTHERS OR USED FOR ANY PURPOSE OTHER THAN THAT WHICH IT WAS OBTAINED WITHOUT THE EXPRESSED WRITTEN CONSENT OF SAMTEC, INC.

**SAMTEC**

520 PARK EAST BLVD, NEW ALBANY, IN 47150  
PHONE: 812.944.6733 FAX: 812.948.5047  
e-Mail: [INFO@SAMTEC.COM](mailto:INFO@SAMTEC.COM) CODE: 55322

**MATERIAL:** DO NOT SCALE DRAWING  
INSULATOR: HIGH TEMP NYLON  
CONTACT: PHOS BRONZE



F:\DWG\MISC\MKTG\USB-AM-S-X-X-SM1-MKT.SLDDRW

SHEET SCALE: 2:1

DESCRIPTION:  
USB SMT, 4 PIN, TYPE A, SHORT FOOT, 1MM

DWG. NO. **USB-AM-S-X-X-SM1-X-XX**

BY: B.HARPENAU 2/06/06 SHEET 1 OF 1