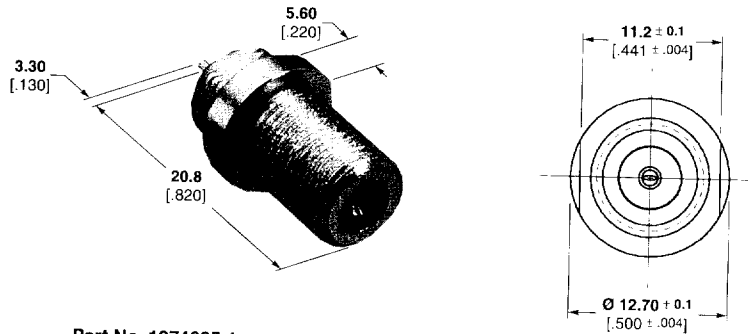


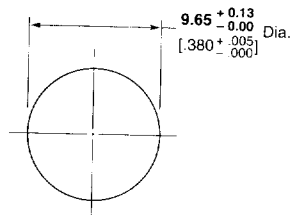
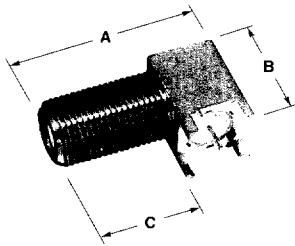
F Series Connectors (Continued)

Bulkhead Jack, PC Board

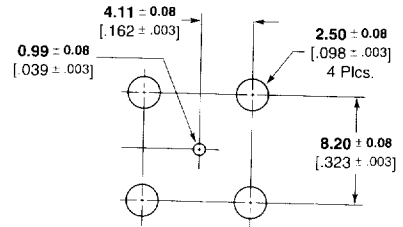


Part No. 1274085-1

Right Angle PC Board Mount Jacks

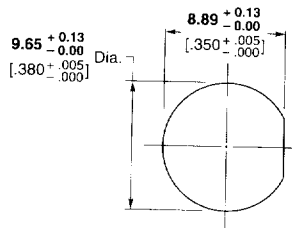
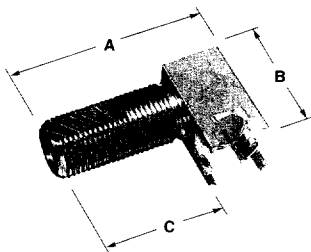


Recommended Panel Cutout

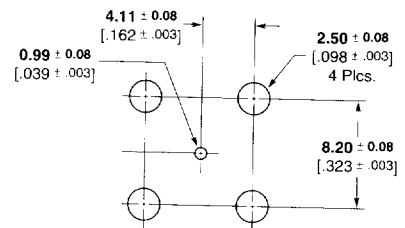


PC Board Layout

Body Plating		Center Contact Plating	Dimensions			Part No.
Barrel	Base		A	B	C	
Nickel	Tin-lead	Tin-lead	26.26 1.034	17.91 .705	16.76 .660	415476-1
Nickel	Tin-lead	Tin-lead	25.40 1.00	14.48 .570	15.90 .626	415302-1
Nickel	Tin-lead	Tin-lead	31.75 1.250	14.48 .570	22.25 .876	415302-2



Recommended Panel Cutout



PC Board Layout

Body Plating		Center Contact Plating	Dimensions			Part No.
Barrel	Base		A	B	C	
Nickel	Tin-lead	Tin-lead	29.97 1.180	17.53 .690	12.19 .480	887078-1

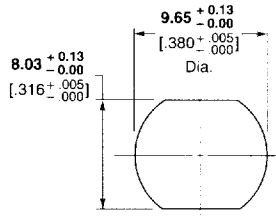
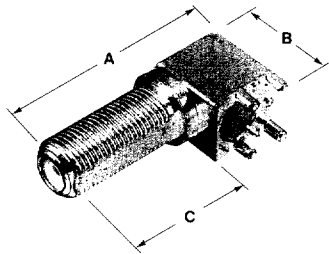
*Connectors will accept a center conductor, diameter of 0.51-1.19 [.020-.047]



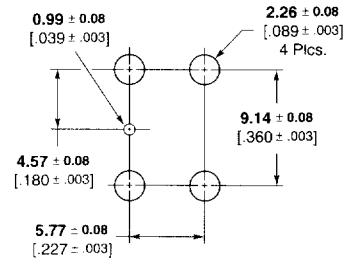
RF Coax Connectors

F Series Connectors (Continued)

Right Angle PC Board Mount Jacks (Continued)



Recommended Panel Cutout



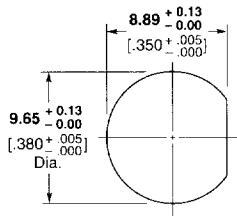
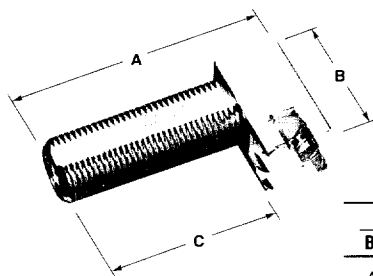
PC Board Layout

Body Plating		Center Contact Plating	Dimensions			Part No.
Barrel	Base		A	B	C	
Nickel	Tin-lead	Tin-lead	33.81 1.331	15.75 .620	19.86 .782	415276-2*

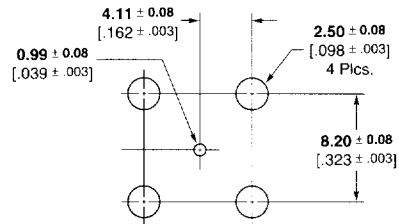
*Connector will accept center conductor diameter range of 0.56-1.19 [.022-.047].

Right Angle PC Board Mount Jack, High Temperature

*High temperature versions use PTFE dielectric (see table)



Recommended Panel Cutout



PC Board Layout

Dielectric			Solder Post Plating	Dimensions			Part No.
Bottom	Middle	Front		A	B	C	
Acetal	Acetal	Polypropylene	Nickel	35.61 1.402	16.89 .665	26.11 1.028	415024-1
PTFE	PTFE	PTFE	Nickel	35.61 1.402	16.89 .665	26.11 1.028	415024-2
Acetal	Acetal	Polypropylene	Tin-lead	35.61 1.402	16.89 .665	26.11 1.028	415024-3
PTFE	PTFE	PTFE	Tin-lead	25.40 1.00	17.91 .705	14.99 .590	415214-1