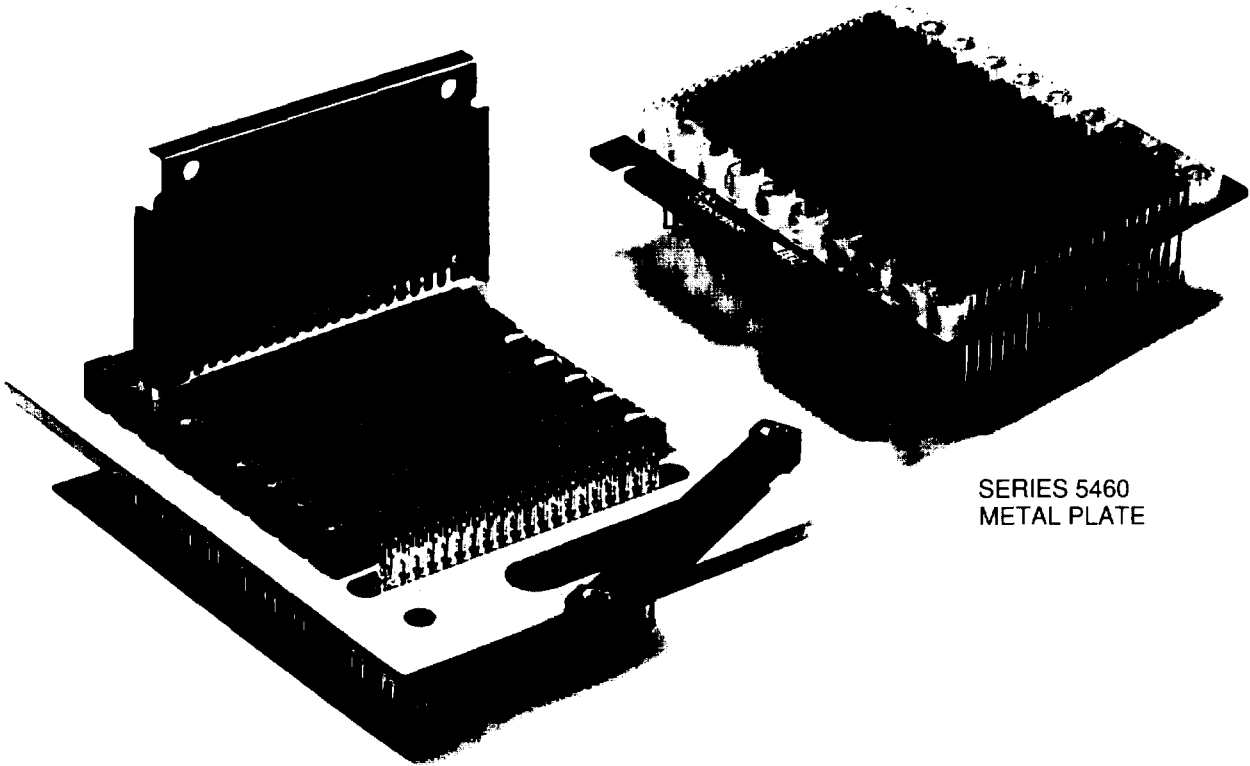


SEM

BACKPANEL SYSTEMS

- SERIES 5460 METAL PLATE
- SERIES 8270 8170 PRESS-FIT
- HIGH RELIABILITY. ECONOMY AND MODULE CAPABILITY

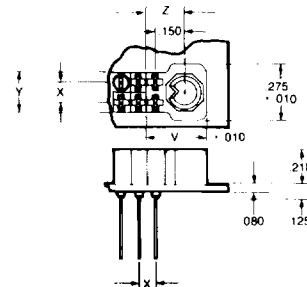
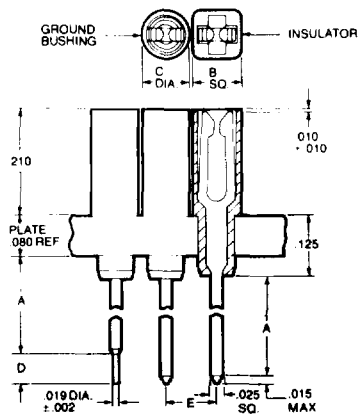


SERIES 8270/8170
PRESS-FIT

SERIES 5460
METAL PLATE

SERIES 5460

Components for SEM
Metal Backpanel Systems



CONTACTS

Part Number	A ± .015	D ± .005
67 5460 0314	.630	—
67 5460 0324	.535	—
67 5460 0334	.505	—
67 5460 0344	.755	—
67 5460 0354	.630	.156
67 5460 0364	.535	.156
67 5460 0374	.505	.156

INSULATORS

Part Number	B ± .015	E
67 5460 3118	.096	.100
67 5460 3128	.120	.125

GROUND

Part Number	C
67 5420 4115	.100
67 5420 4125	.125

KEYING BUSHING HOUSING

Part Number	X	Y	Z	V
67 5460 3218	.100	.196	.198	.310
67 5460 3228	.125	.246	.223	.335

.100" and .125" Contact Spacing MIL-C-28754

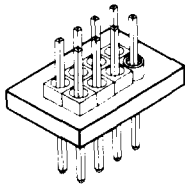
SPECIFICATIONS

Ground Bushing Material:	Aluminum alloy per QQ-A-225
Ground Bushing Coating:	Chromate per MIL-C-5541, Class 3
Insulator Material:	Polyamide (nylon) per MIL-P-20693, Type I, Color, natural. Other colors available on special request.
Current Rating:	3 amperes, maximum
Temperature:	-55°C to 105°C
Insertion/Withdrawal Force:	2 to 16 ounces
Contact Torque Resistance:	3 inch ounces minimum applied to wire wrappable terminal when tested per MIL-STD-202, Method 211, Condition E.
Contact Retention:	7.5 pounds, minimum axial force
Contact to Contact Resistance:	6 milliohms, maximum
Military Specification:	Meets all applicable portions of MIL-C-28754.

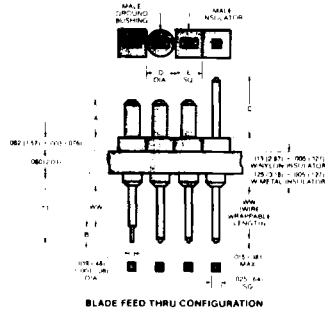
Note: See the QPL Section for the associated Military cross reference.

SERIES 5460

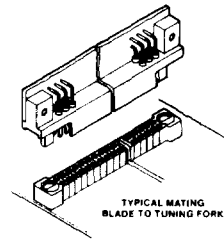
Components for SEM Metal Backpanel Systems



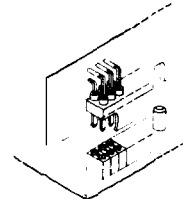
TYPICAL CONTACT ASSEMBLY



BLADE FEED THRU CONFIGURATION



TYPICAL MATING BLADE TO TUNING FORK



ALTERNATE KEYING METHOD

**.100" and .125" Contact Spacing
MIL-C-28754**

SPECIFICATIONS

Ground Bushing Material:

Aluminum alloy

Ground Bushing Finish:

Chromate per MIL-C-5541, Class 3

Insulator Material:

Polyamide (nylon) per MIL-P-20693, Type I, Color, natural. Other colors available on special request.

Keying Insert Material:

Metal or clear Polycarbonate.

Contact Material:

Beryllium copper per QQ-C-553 with a minimum hardness of Rockwell 50 on 30 N scale (female). Half-hard brass per QQ-B-626 or QQ-B-613 (male).

Contact Plating:

Gold per MIL-G-45204, Type II, Grade C, Class 1, 50 microinches, minimum, over nickel underplating, per QQ-N-290, Class 1, 50 microinches, minimum. For other platings and thicknesses, please consult factory.

Current Rating: 3 amperes, maximum

Temperature: -55°C to 85°C

Contact to P.C. Motherboard

Resistance: .5 milliohms, maximum

Insertion/Withdrawal Force:

2 to 6 ounces

Contact Torque Resistance:

3 inch ounces minimum applied to wire wrappable terminal when tested per MIL-STD-202, Method 211, Condition E

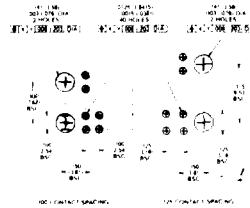
Contact Retention: 7.5 pounds, minimum axial force

Contact to Contact

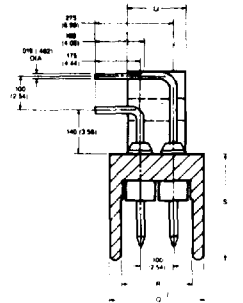
Resistance: 6 milliohms, maximum

Military Specifications:

Designed to meet applicable portions of MIL-C-28859



RECOMMENDED HOLE PATTERN



Insulator - Male

Part Number	E ± .003 (.08)	Contact Spacing
67 5460 3018	.096 (2.44)	.100 (2.54)
67 5460 3028	.120 (3.05)	.125 (3.18)

Ground Bushing - Male

Part Number	D	Contact Spacing
67 5420 4015	.100 (2.54)	.100 (2.54) or .125 (3.18)

Contacts - Blade

Part Number	TT	WW (Ref) ± .015 (.38)	A ± .008 (.20)	B ± .010 (.25)	C ± .008 (.20)
67 5460 0212	.678 (17.22)	.625 (22.13)	.140 (3.56)	—	—
67 5460 0222	.583 (14.81)	.530 (13.46)	.140 (3.56)	—	—
67 5460 0232	.553 (14.05)	.500 (12.70)	.140 (3.56)	—	—
67 5460 0242	.303 (7.70)	.250 (6.35)	.140 (3.56)	—	—
67 5460 0252	.676 (17.22)	.625 (15.88)	.175 (4.45)	—	—

HOLE SPECIFICATION

Drilled Hole Diameter:

.0453 ± .001 (1.150 ± .03)

Copper Plating:

.001 — .003 (.03 — .08)

Solder Plating:

.0003 — .0008 (.008 — .02)

Recommended Pad Diameter:

.070 (1.78)

Header Extrusions

Q	R	S	T	U
.285 (0.72)	.214 (0.54)	.330 (0.84)	.580 (1.47)	.175 (0.44)
.385 (0.98)	.315 (0.80)	.275 (0.70)	.525 (1.33)	.280 (0.71)

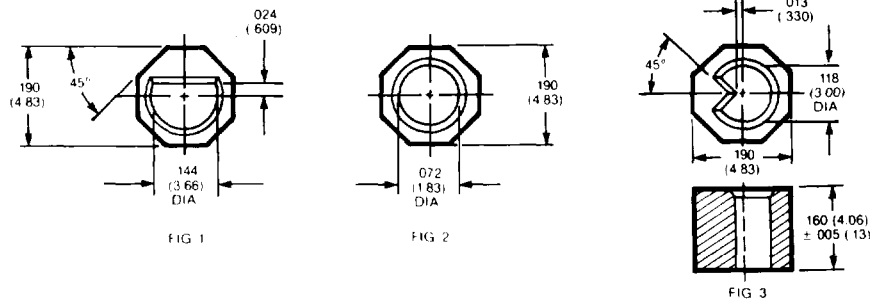
Note: See the QPL Section for the associated Military cross reference.

SERIES 5460

Polarizing Pins and Bushings

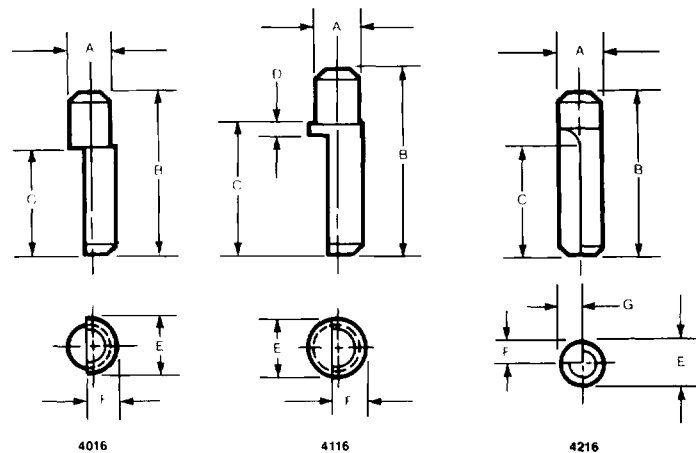
ORDERING INFORMATION

Call us for assistance in designing the SEM backpanel systems for your requirements. We'll work with you in meeting all of the needs of your application. Elco can supply complete backpanel assemblies, including boards or plates, headers, connectors and more. And, you can depend on our engineering from design to final test.



TOOL KIT

Insertion/removal tool kit
P/N 06-8270-0101 for panel repair,
includes contact insertion and
removal tools.



SERIES 5460/8270 KEYING BUSHING

Part Number (Polycarbonate)	Part Number (Metal)	Fig.	Type
67 5460 5017	67 5460 5016	3	V
67 5460 5027	67 5460 5026	1	D
67 5460 5037	67 5460 5036	2	O

KEYING PINS

Mat'l 303 CRS	A	B	C	D	E	F	G
67 5460 4016	.100 (2.54)	.410 (10.41)	.270 (6.86)	—	.125 (3.18)	.075 (1.91)	—
67 5460 4116	.100 (2.54)	.405 (10.29)	.295 (7.45)	.017 (0.43)	.125 (3.18)	.075 (1.91)	—
67 5460 4216	.100 (2.54)	.410 (10.41)	.270 (6.86)	—	.100 (2.54)	.050 (1.27)	.050 (1.27)