

TITANIUM COMPATIBLE LASER WELDABLE 50 OHM FEEDTHROUGH SMPM ADAPTABLE, .012 DIAMETER CENTER CONTACT, PRESS-IN

REVISIONS			
REV	CHANGE NO.	DATE	CFG APPROVAL
-	INIT RLSE	2013-05-29	J. PETER
A	DCN001243	11/6/2013	<i>[Signature]</i>

- CONFIGURATION FOR INTERFACING TO SMPM "BULLET" STYLE ADAPTER
- DESIGNED TO LASER WELD INTO AN ELECTRONIC CHASSIS
- INDUSTRY STANDARD NICKEL-IRON-COBALT ALLOY CONTACT WITH CORNING 7070 EQUIVALENT GLASS
- RF GROUNDING SPRING FOR EXCELLENT PERFORMANCE OVER TEMPERATURE

1. LEAK RATE: LESS THAN OR EQUAL TO 1X10E-9 CC/SEC He AT ONE ATMOSPHERE DIFFERENTIAL PRESSURE.
2. NOMINAL IMPEDANCE: 50 OHMS
3. INTERFACE IN ACCORDANCE WITH MIL-STD-348, SMPM.

4. MATERIALS:
 PIN: NICKEL-IRON-COBALT ALLOY IN ACCORDANCE WITH ASTM F15.
 DIELECTRIC: CORNING 7070 EQUIVALENT GLASS (MATCHED SEAL).
 SHELL (WELD FLANGE): TITANIUM UNALLOYED GRADE 2 IN ACCORDANCE WITH ASTM B265 OR B348.
 RF GROUNDING SPRING: BERYLLIUM-COPPER ALLOY 172/173 IN ACCORDANCE WITH ASTM B 194 (NICKEL/GOLD PLATE).

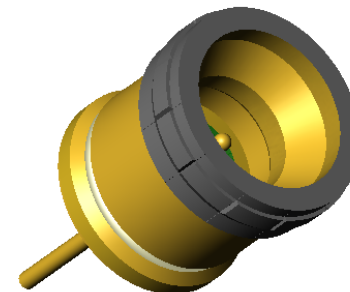
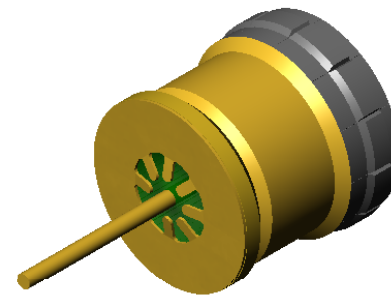
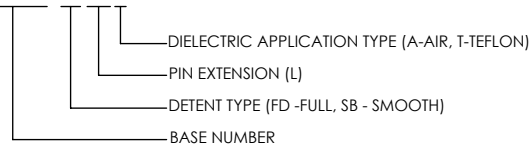
5. FINISH:
 PIN: NICKEL PLATE PER QQ-N-290, CLASS 2, .000100/.000250 THICK.
 GOLD PLATE PER ASTM B488, TYPE III, CODE A, .000050/.000100 THICK.

- GROUNDING SPRING: NICKEL PLATE PER QQ-N-290, CLASS 2, .000100/.000250 THICK.
 GOLD PLATE PER ASTM B488, TYPE III, CODE A, .000030/.000050 THICK.

- SHELL (EXCEPT WELD AREA): ELECTROLESS NICKEL PER ASTM B733, .000200/.000300 THICK.
 GOLD PLATE PER ASTM B488, TYPE III, CODE A, .000050/.000150 THICK.
 WELD AREA: NONE.

6. ORDERING INSTRUCTIONS:
 SPECIFY BASE NUMBER FOLLOWED BY DASH NUMBER INDICATING DETENT TYPE, PIN EXTENSION, AND DIELECTRIC APPLICATION TYPE:

EXAMPLE: SRIFT1012 - FD 130 A



VIEWS SHOWN WITHOUT GROUNDING SPRING

UNLESS OTHERWISE SPECIFIED DIMENSIONING IAW ASME Y14.5M-1994 DIMENSIONS APPLY AFTER PROCESSES DIMENSIONS IAW US CUSTOMARY UNITS .X ± .1, .XX ± .01, .XXX ± .005, ∠ ± .5° .010 MAX OUTSIDE R, .005 MAX INSIDE R 125 RMS SURFACE FINISH	(321) 254-4067 WWW.SRIHERMETICS.COM	
	TITLE FEEDTHROUGH, SMPM, TITANIUM LASER WELDABLE, PRESS-IN	
THIRD ANGLE PROJECTION 	SIZE A	DOCUMENT SRIFT1012
SCALE 8:1	CAGE CODE 3PJY7	SHEET 1 OF 2

8 7 6 5 4 3 2

D

D

C

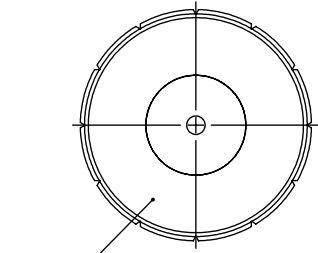
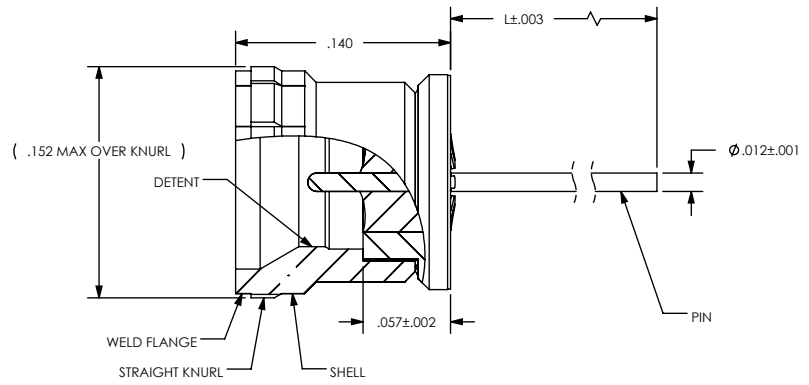
C

B

B

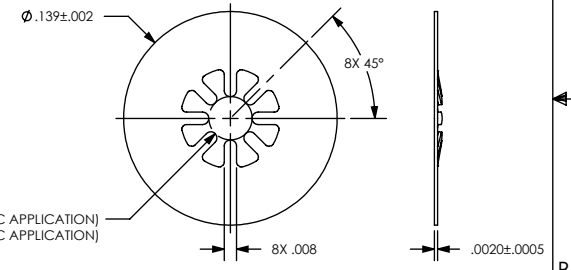
A

A



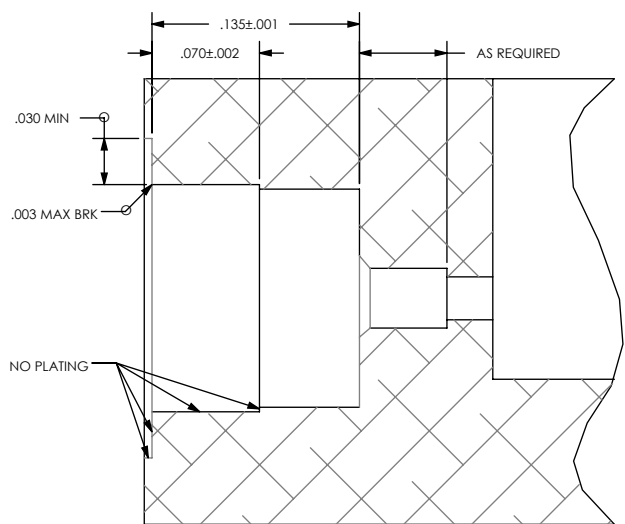
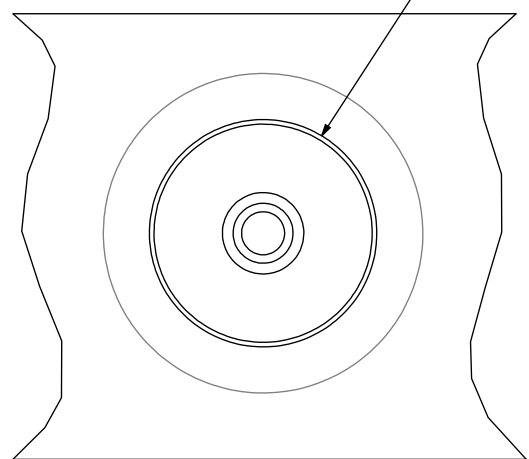
VIEW SHOWN WITHOUT RF GROUNDING SPRING

INSTALL THIS DIRECTION →



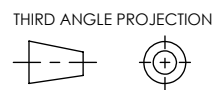
RF GROUNDING SPRING, SHIPPED UNINSTALLED
 PART NUMBER SRIFT1012-GS1, AIR DIELECTRIC
 PART NUMBER SRIFT1012-GS2, TEFLON DIELECTRIC

- $\phi .028 \pm .001$ THRU (AIR DIELECTRIC)
- $\phi .039 \pm .001$ SHOWN (PTFE DIELECTRIC)
- $\checkmark \phi .053 \pm .002 \times 90^\circ$ (PTFE DIELECTRIC ONLY)
- $\square \phi .142 \pm .001 \nabla$ SHOWN
- $\square \phi .148 \pm .001 \nabla$ SHOWN
- $\square \phi$ AS SHOWN $\nabla .005 \pm .002$



SUGGESTED HOLE DETAIL

UNLESS OTHERWISE SPECIFIED
 DIMENSIONING IAW ASME Y14.5M-1994
 DIMENSIONS APPLY AFTER PROCESSES
 DIMENSIONS IAW US CUSTOMARY UNITS
 $.X \pm .1, .XX \pm .01, .XXX \pm .005, \angle \pm .5^\circ$
 $.010$ MAX OUTSIDE R, $.005$ MAX INSIDE R
 125 RMS SURFACE FINISH



		(321) 254-4067	
		WWW.SRIHERMETICS.COM	
TITLE			
FEEDTHROUGH, SMPM COMPATIBLE, ALUMINUM LASER WELDABLE			
SIZE	DOCUMENT	SRIFT1012	REV
A			A
SCALE	CAGE CODE	3PJY7	SHEET
8:1			2 OF 2

8 7 6 5 4 3 2