

## DUAL POLARISED DUAL-BAND ANTENNA GSM900/1800 XP/80/6 TYPE 2145

- INBUILT DIPLEXER
- SIDELOBE SUPPRESSION

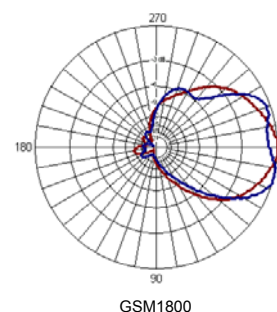
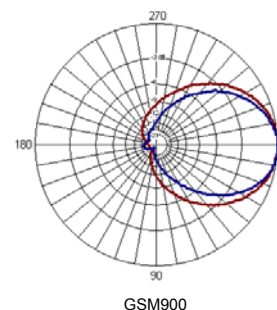
This compact dual-band, dual-polar unit is intended for Microcell applications, either indoor or outdoor, where visual impact is important.

It is fitted with inbuilt diplexers for each port to simplify connection. Sidelobe suppression reduces the possibility of interference from adjacent cells. Wall mounting is easily carried out using the attached joggle plates.



### TECHNICAL SPECIFICATION

Frequency	870-960Mhz	1710-1880Mhz
Gain	6dBi	6dBi
VSWR	1.6:1 max	1.6:1 max
Horizontal Beamwidth	80°	83°
Vertical Beamwidth	80°	74°
Polarisation	+45° and -45°	+45° and -45°
Fixed Electrical Downtilt	0°	0°
Upper Sidelobe Suppression	>-17dB	>-17dB
Front-to-Back Ratio	>17dB	>16dB
Isolation Between Ports	>-20dB	>-25dB
Isolation Between Bands	30dB	30dB
Power Rating	30W	30W
Connectors (bottom)	N type female x 2	-
Impedance	50Ω	-
Dimensions (LxWxD)	350 x 217 x 56 mm	-
Wind Loading	115N @ 45m/s	-
Operational Wind Speed	45m/s	-
Survival Wind Speed	56m/s	-
Weight	1.5kg	-
Temperature	-55° to +70°C	-
Mounting	Wall Mounting	-



#### THALES ANTENNAS LTD

First Avenue, Millbrook Trading Estate, Southampton SO15 0LJ United Kingdom

Tel: +44 (0) 2380 705705, Fax: +44 (0) 2380 701122, email: sales@racal-antennas.co.uk, www.thalesantennas.com

Thales reserve the right to vary in detail from the description and specification in this publication. Issue: 6/01/1