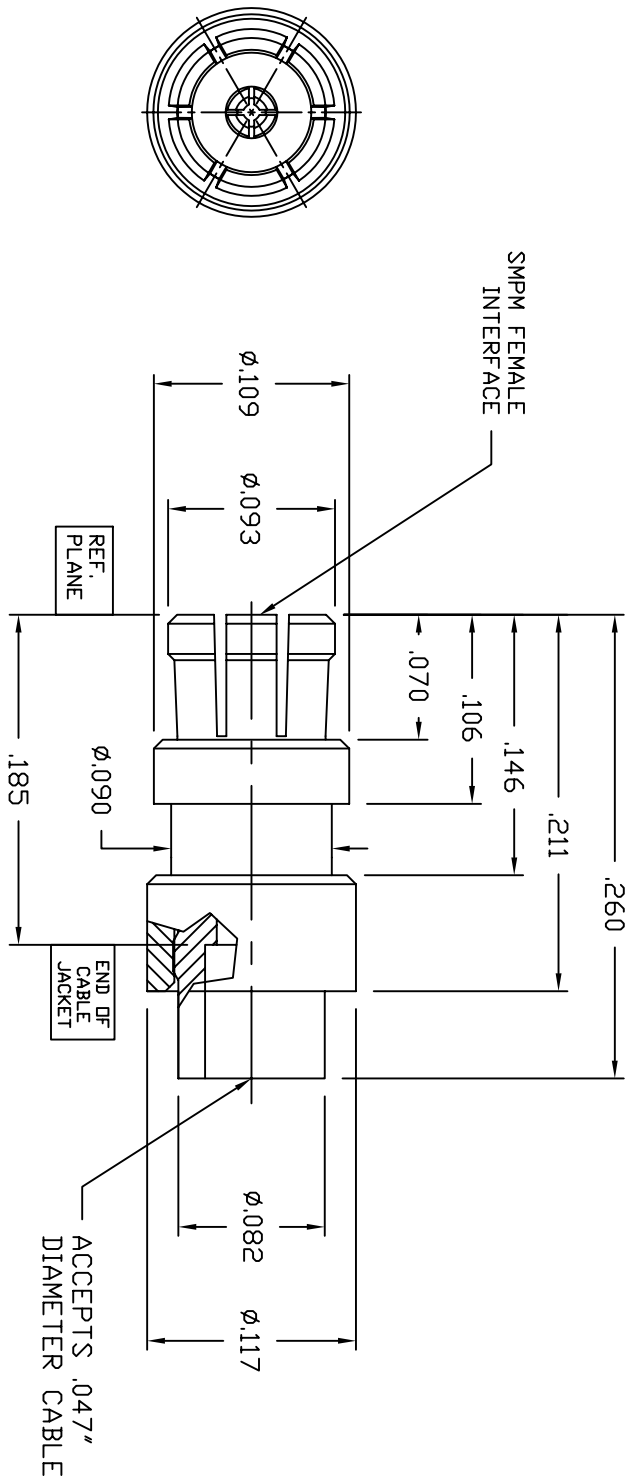


CONNECTOR P/N MA1-MFCS-001

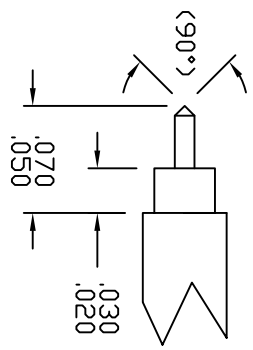
COMPONENT	MATERIAL	FINISH
HOUSING AND CONTACT	BeCu PER ASTM B 196 AND/OR ASTM B 197 AND UNS #C17300 OR UNS #C172000	GOLD PLATE PER ASTM B 488, TYPE 1, GRADE G-500050 DD .000100 THICK OVER NICKEL PER AMS 24290 OR AMS 2404 000050 TD .000150 THICK.
INSULATOR(S)	PTFE(FLND) PER ASTM D 1710 AND ASTM D 1457	N/A

ECO NO.		DESCRIPTION		DATE		RELEASED	
A	INITIAL RELEASE						

REV. NO. 01-MA1-MFCS-001



CABLE TRIM
DETAIL



UNLESS OTHERWISE SPECIFIED DIMENSIONS ARE IN INCHES TOLERANCES ON:		PRODUCT CODE		TITLE	
DECIMALS	ANGULAR	DATE	MANUFACTURER	DATE	DESCRIPTION
.XX ± .005	± .1/32	5/20/02	MA1C1	5/20/02	SMPM FEMALE STRAIGHT TO .047 CABLE
DO NOT SCALE DRAWING		CHECK DME	APPROVED	SIZE	DWG. NO.
		DME	DME	C 67720	01-MA1-MFCS-001
		THIS DRAWING AND THE DATA DISCLOSED HEREIN IS CONFIDENTIAL AND PROPRIETARY TO CRISTEK CORPORATION. IT IS TO BE USED IN PART TO MAKE WITHOUT THE WRITTEN PERMISSION OF CRISTEK CORPORATION.		SCALE	SHEET 1 OF 1
		THIRD ANGLE PROJECTION			

CRISTEK
1301 S. LEVY STREET
ANN ARBOR MI 48106
(734) 618-2900