

This document, including the design, configuration and mechanical features revealed herein are the sole, confidential and proprietary property of TRU Corporation. Reproduction or use thereof, in whole or part, is prohibited without the prior written consent of TRU Corporation.

REV.	DESCRIPTION	DATE	APPROVED
-	ORIGINAL ISSUE	09/26/12	TRC

### ENGINEERING DATA

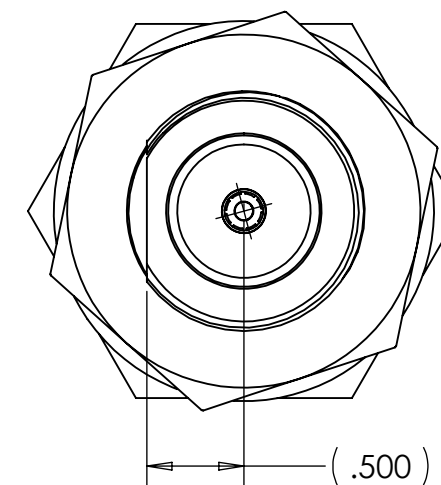
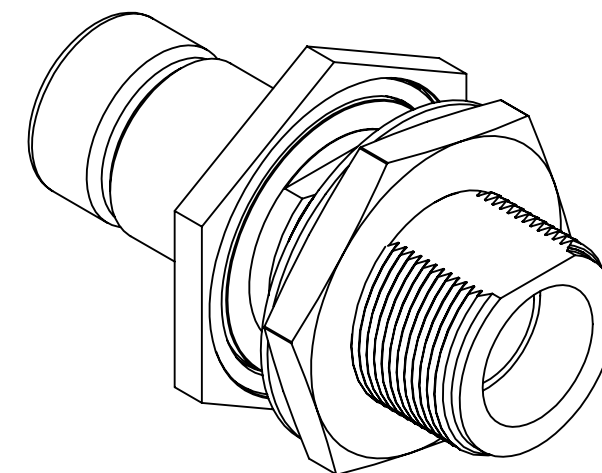
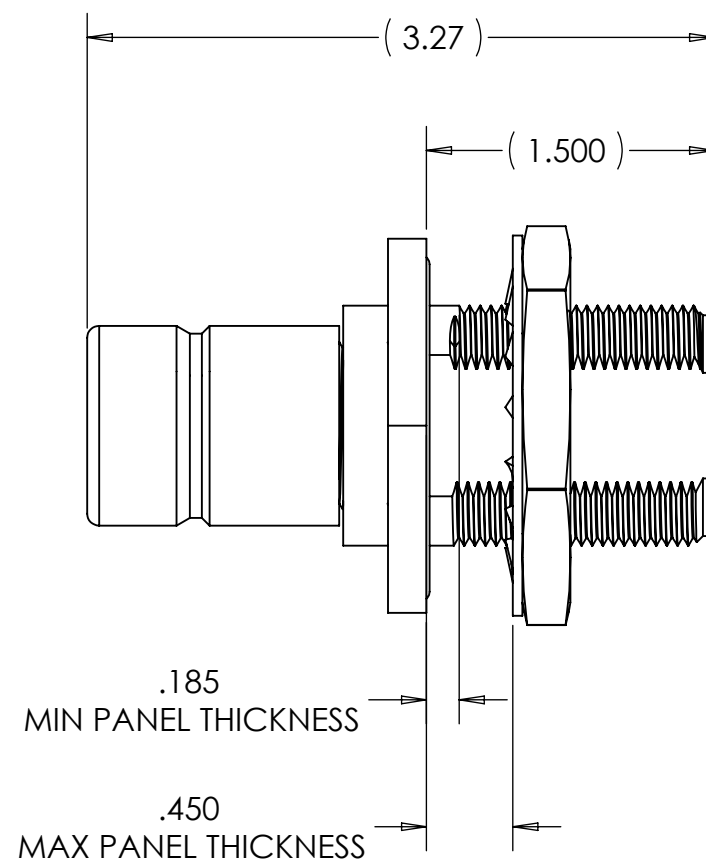
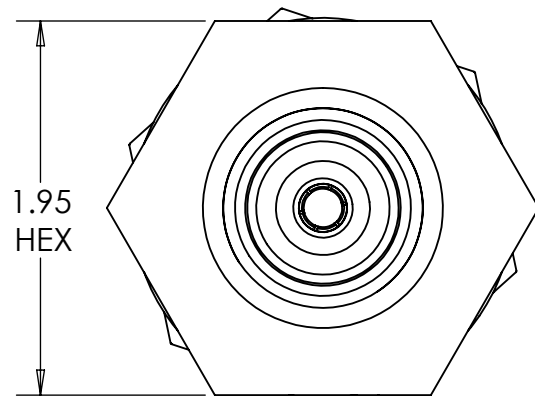
**ELECTRICAL:**  
 IMPEDANCE: 50 OHMS NOMINAL  
 FREQUENCY RANGE: DC - 250MHz

**MECHANICAL:**  
 SQS(f) INTERFACE PER TRU SPECIFICATIONS  
 LC(f) INTERFACE PER TRU SPECIFICATIONS

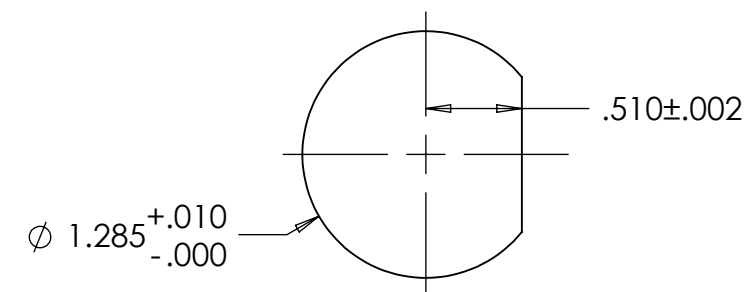
**MATERIAL:**  
 CONTACTS: BERYLLIUM COPPER  
 LOCK WASHER: STEEL  
 INSULATORS: TEFLON  
 OTHER METAL PARTS: BRASS

**FINISH**  
 CONTACTS: SILVER PLATED  
 LOCK WASHER: ZINC PLATED  
 ALL OTHER METAL COMPONENTS: NICKEL PLATED

**ENVIRONMENTAL:**  
 OPERATING TEMP: -65°C to 165°C




RECOMMENDED MOUNTING DIMENSIONS



### NOTES:

- UNLESS OTHERWISE SPECIFIED;  
ALL DIMENSIONS ARE REFERENCE ONLY.

MATERIAL	DO NOT SCALE DRAWING	DRAWN TRC	DATE 09/14/12	 <b>TRU Corporation</b> 245 Lynnfield St, Peabody, MA 01960 EXPERIENCE. TRU INNOVATION.
	UNLESS OTHERWISE SPECIFIED: DIMENSIONS ARE IN INCHES	ENG APPR. TRC	DATE 09/26/12	
COMMENTS:	TOLERANCES: FRACTIONS: $\pm 1/64$ .XX : $\pm .01$ .XXX: $\pm .005$ ANGLES: $\pm 1/2^\circ$ MACHINED SURFACES: $63/\sqrt{\phantom{x}}$	MFG APPR. NRM	DATE 09/26/12	TITLE:  SQS(f) TO LC(f) ADAPTER, STR
		OTHER APPR. AM	DATE 09/25/12	SIZE <b>B</b> DWG. NO. TRU-12098 REV - CAGE CODE: 92180 SCALE: 2:1 SHEET 1 OF 1
surface area: sq inch	weight: lbs	THIRD ANGLE PROJECTION		