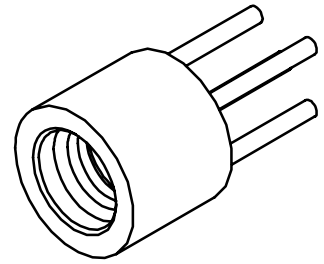


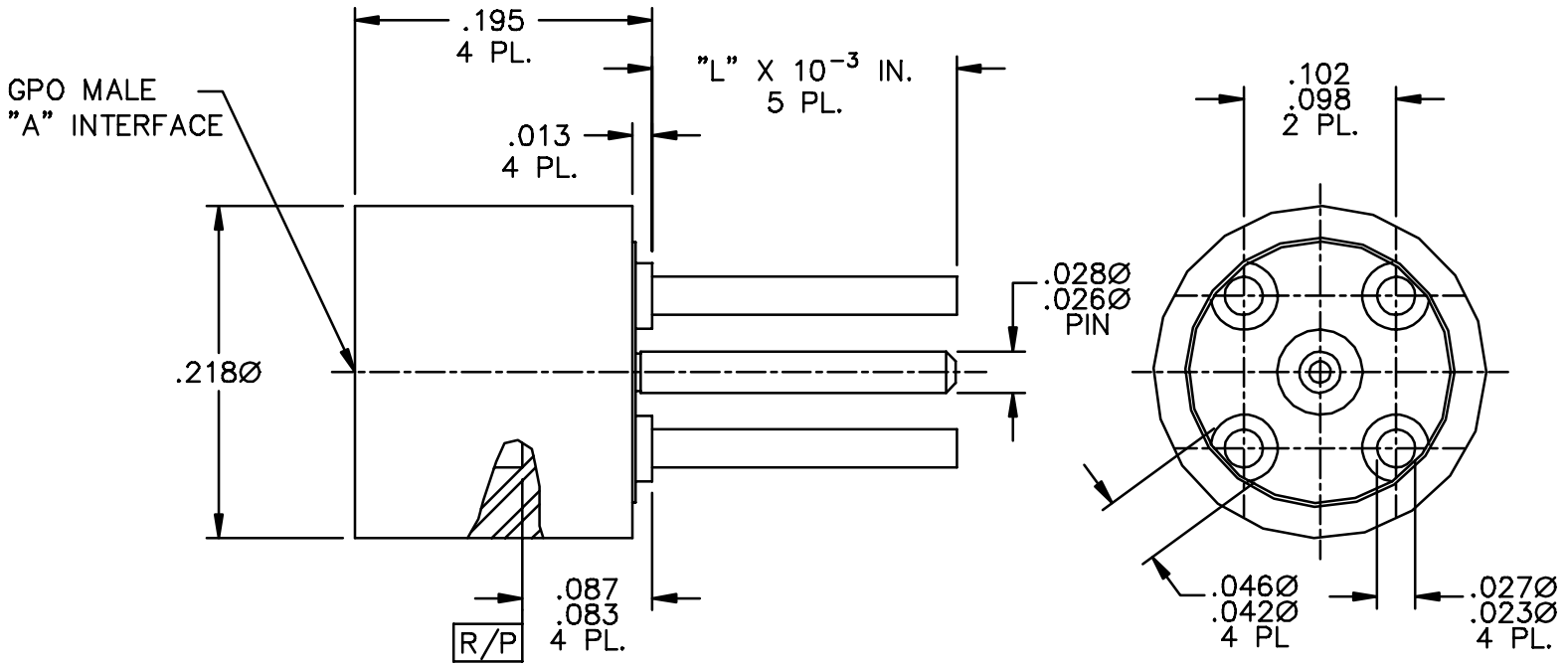
CATALOG NUMBER	"A" INTERFACE
0119-670-3-FD-"L"	FULL DETENT
0119-670-3-LD-"L"	LIMITED DETENT
0119-670-3-SB-"L"	SMOOTH BORE

"L"
200
140
100

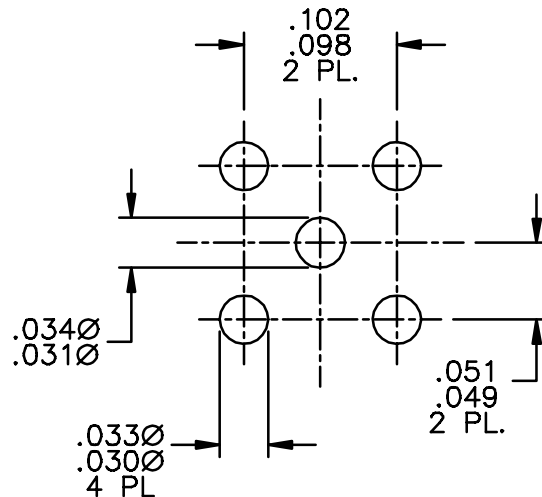


MATERIAL AND FINISH

HOUSING: CRES 303; PASSIVATED
 CENTER CONTACT AND BUSHING: BeCu; GOLD PLATE 50-100 MICRONS OVER NICKEL PLATE 50 MICRONS MIN.
 DIELECTRIC: VIRGIN PTFE



RECOMMENDED MOUNTING HOLE PATTERN



This drawing and any data contained herein is the property of Corning Gilbert Inc., and constitutes and contains proprietary and confidential information. Neither receipt nor possession of this drawing confers or transfers any right to duplicate, use or disclose any information contained herein except as expressly authorized by Corning Gilbert Inc.

GPO MALE
 STRAIGHT TO P.C. BOARD
 (TAB DETENT)

IDENT CODE:
 82316

REVISION: F

Corning Gilbert Inc.

SOURCE FILE: MECR# 843

DWG. NO.: OL-0119-670-3-TAB

ASSY. PROC.: -