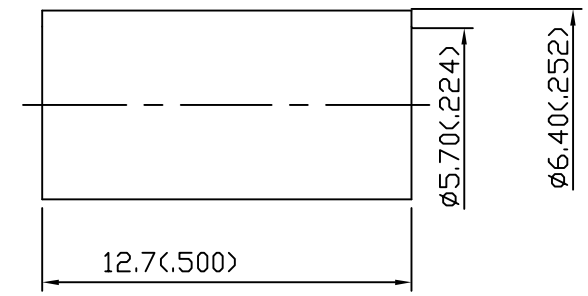
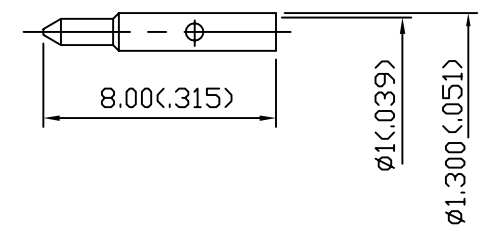
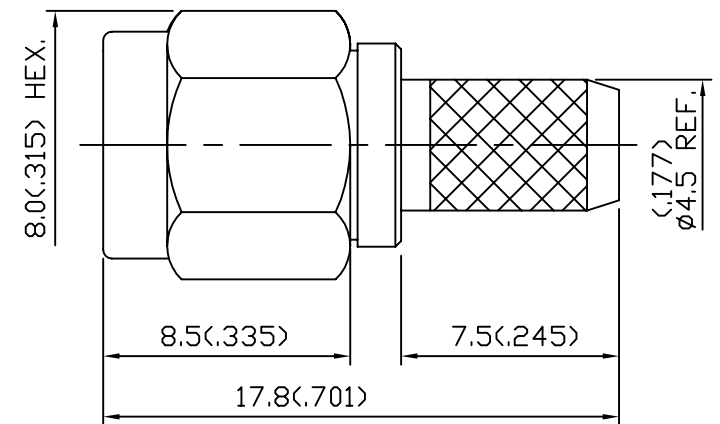


DRAWING REVISIONS			
REV	DOCUMENT	APP	DATE
2	PRELIM.		



NOTES:
 1. SPECIFICATIONS:
 MATERIALS:
 BODY, FERRULE AND SHELL: BRASS
 PLATING: GOLD 3 MICRO INCHES MIN.
 FERRULE: BRASS
 PLATING: GOLD FLASH MIN.
 CENTER CONTACT: BRASS
 PLATING: GOLD 50 MICRO INCHES MIN.
 INSULATOR: TEFLON
 GASKET: SILICONE-RED
 WASHER: SST

ELECTRICAL

IMPEDANCE: 50 Ohms
 FREQUENCY RANGE: 0 TO 18 GHz
 WORKING VOLTAGE: <= 500V rms
 INSULATION RESISTANCE: >= 5000 MOhms
 CONTACT RESISTANCE:
 CENTER CONTACT: 3 MILLI Ohms MAX.
 OUTER CONTACT: 2 MILLI Ohms MAX.

MECHANICAL:

DURABILITY: 500 MATING CYCLES.
 OPERATING TEMPERATURE: -65°C TO 125°C.
 CONNECTOR INTERFACE PER MIL-STD-348A

2. ALL DIMENSIONS ARE IN MM AND DIMENSIONS IN () ARE IN INCHES.

CINCH PART NO.	CINCH CATALOG NO.
299 98 05 008	SMA50-4103

UNITS METRIC		AUTOCAD	Cinch	1700 FINLEY RD LOMBARD, IL. 60148
DO NOT SCALE DRAWING	DRAWN BY A.BALI	DATE 04/28/03	TITLE SMA PLUG/STRA CABLE(RG-142U) 50 Ohms.	
UNLESS OTHERWISE SPECIFIED, DIMENSIONS ARE IN MILLIMETERS	DESIGN ENGINEER A.BALI	04/28/03	MATERIAL SEE NOTE	CONTROL SPEC NUMBER
FILLET/RADIUS 0.50 MAX.	DESIGN ENGINEERING MGR.		MATERIAL SPEC NUMBER	FINISH
TOLERANCES AND LIMITS APPLY OVER ADDITIVE FINISH	MFG. ENGINEERING		CAD FILE NUMBER SMA50-4103	DRAWING NUMBER SMA50-4103
	QUALITY ASSURANCE		CAGE IDENT NO. 71785	SIZE B
			SCALE NTS	SHEET 1 OF 1