

Laser DIODE

LD785-SE400



S/N: 785P400K27.C04

Center Wavelength: 789.1 nm

Fiber Type: NA

Test Date: 5/23/2018



Diode Package: TO 9 mm

Connector: NA

Tested By: Paya



QA: Pass

Summary of Test Data (CW, T_{case}=25°C)

Parameter	Symbol	Value	Unit
Fiber Output Power	P _{op}	400.0	mW
Operating Current@P _{op}	I _{op}	510.2	mA
Operating Voltage@P _{op}	V _{op}	2.14	V
Threshold Current	I _{th}	80.9	mA
Slope Efficiency	ΔP/ΔI	0.90	W/A

Absolute Maximum Ratings

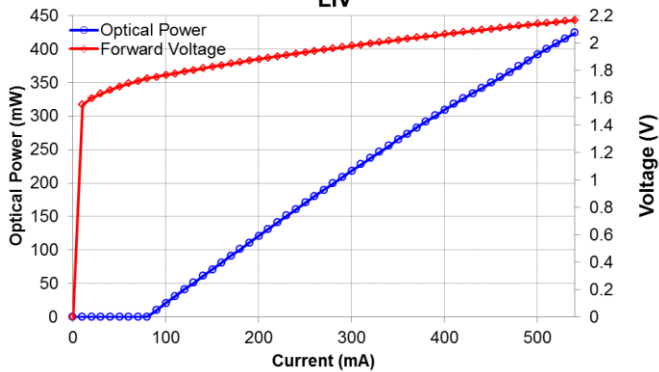
Parameter	Ratings	Unit
Laser Diode Current*	540	mA
Optical Output Power*	400	mW
LD Reverse Voltage*	2	V
Storage Temperature	-40 to 85	°C
Case Temperature	-10 to 50	°C

* CW, T_{case}=25°C

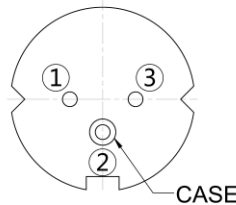


CAUTION- use of controls or adjustments or performance of procedures other than those specified herein may result in hazardous radiation exposure. There are no user serviceable parts in this product. When proper power is applied to this product, Laser radiation will be emitted from TO-window.

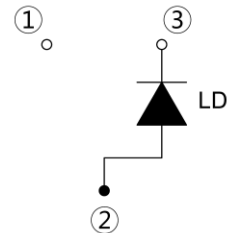
785P400K27.C04
LIV



Diode Bottom View



Pin Code E



Important Notes:

1. The maximum ratings mean the limitation over which the laser should not be operated even instant time.
2. To protect the laser diode from damage due to static electricity (ESD), please follow proper ESD handling precautions.
3. To ensure safe operation use only with a suitable power source that complies with the pertinent requirements for laser systems as specified in IEC-60825-1 "Safety of Laser Products."



USA, Canada, and South America

Thorlabs, Inc.
56 Sparta Avenue
Newton, NJ 07860, USA

Tel: 973-579-7227
Fax: 973-300-3600

Europe

Thorlabs GmbH
85221 Dachau, Germany
Tel: +49-(0)8131-5956-0

Scandinavia

Thorlabs Sweden AB
400 20 Göteborg, Sweden
Tel: +46-31-733-30-00

UK and Ireland

Thorlabs LTD.
Cambridgeshire CB7 4EX, GB
Tel: +44 (0)1353-654440

Japan and Asia

Thorlabs Japan Inc.
Toshima-ku, Tokyo 170-0013, Japan
Tel: +81-3-5979-8889

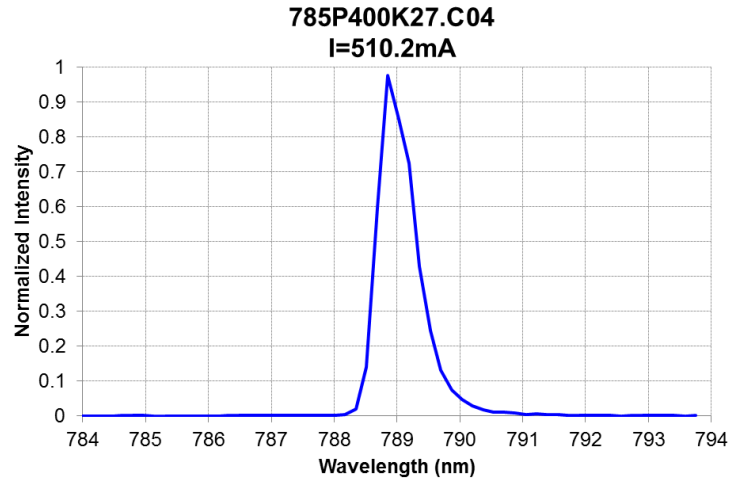
France

Thorlabs SAS
78600 Maisons-Laffitte, France
Tel: +33 (0) 970 444 844

China

Thorlabs China
Shanghai, China
Tel: +86 (0)21-32513486





$T_{\text{case}}=25^{\circ}\text{C}$, $I_{\text{op}}= 510.2\text{mA}$
Spectrum measured by CCS175.