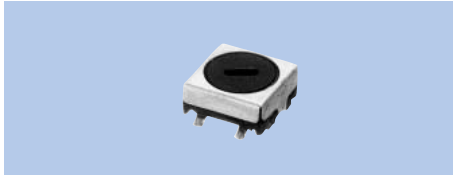


Adjustable Type Coils K Type Series

Coils, Filters

K5-S

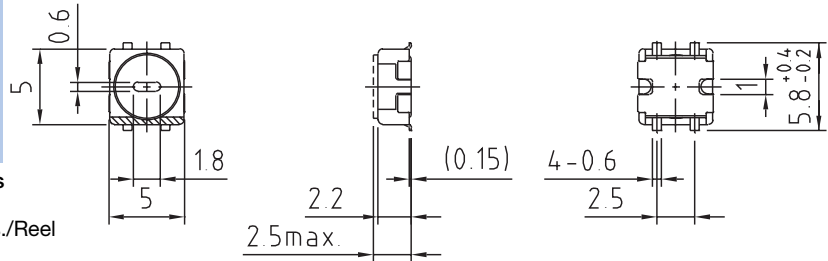


Specifications

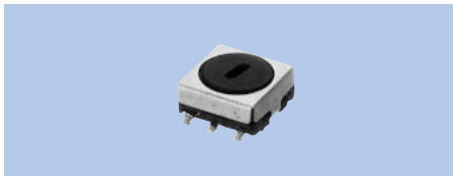
- (1) 1~300μH (4) -
- (2) 0.1~20MHz (5) 40~70
- (3) F:±2%
- L:±4%

Features

- SMD
- 1000pcs./Reel



K5-S2

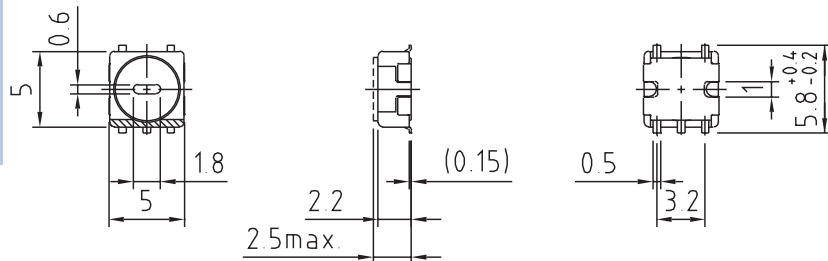


Specifications

- (1) 1~300μH
- (2) 0.1~20MHz
- (3) F:±2%
- L:±4%
- (4) -
- (5) 40~70

Features

- SMD
- 1000pcs./Reel



K5-N1

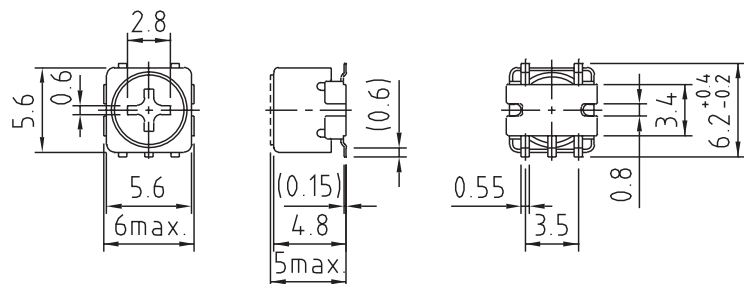


Specifications

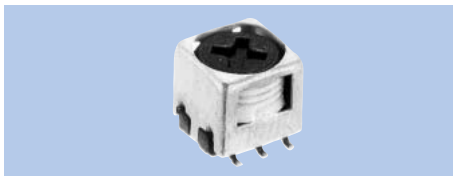
- (1) 1~1200μH
- (2) 0.1~20MHz
- (3) F:±2%
- L:±5%
- (4) 5~15000pF×2
- (5) 50~80

Features

- SMD
- 1000pcs./Reel



K5-N

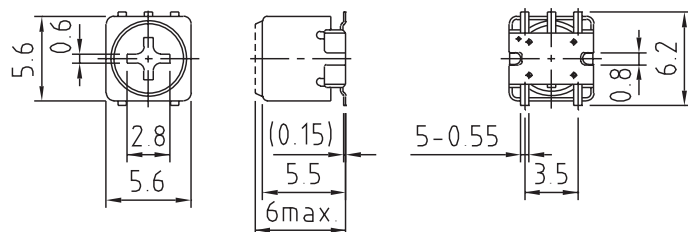


Specifications

- (1) 1~5900μH
- (2) 0.1~20MHz
- (3) F:±2%
- L:±5%
- (4) 5~15000pF×2
- (5) 50~100

Features

- SMD
- 1000pcs./Reel



- (1) Inductance
- (2) Operational frequency
- (3) Variable range of F & L
- (4) Internal capacitance
- (5) Unloaded Q

K5-R2

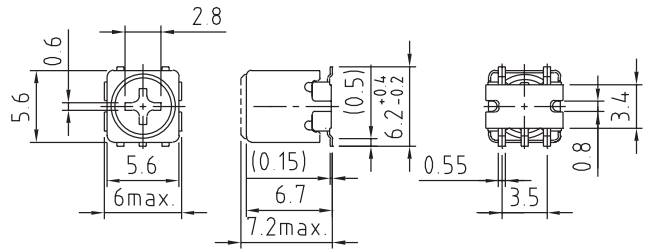


Specifications

- (1) 1~6700μH
- (2) 10~500kHz
- (3) F:±2%
L:±4%
- (4) 5~15000pF×2
- (5) 50~80

Features

SMD
500psc./Reel

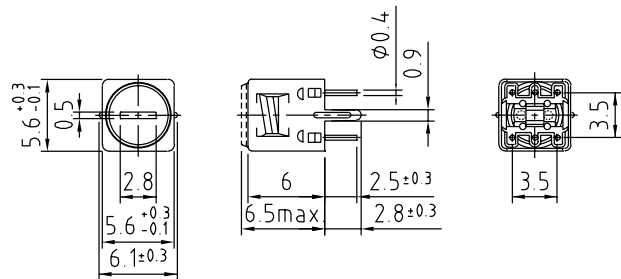


K5-H



Specifications

- (1) 1~1000μH
- (2) 0.1~20MHz
- (3) F:±2%
L:±5%
- (4) 10~10000pF
- (5) 50~100

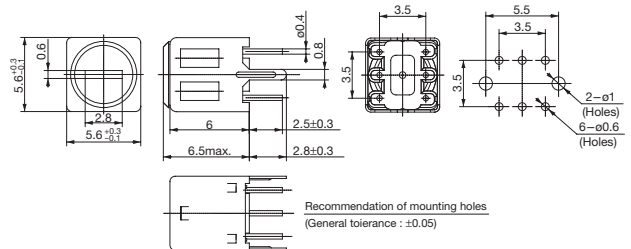


K5-C

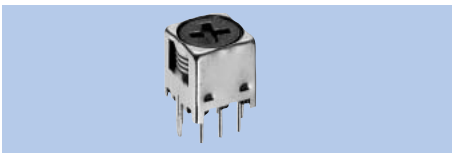


Specifications

- (1) 1~1000μH
- (2) 0.1~20MHz
- (3) F:±2%
L:±5%
- (4) 10~10000pF
- (5) 50~100

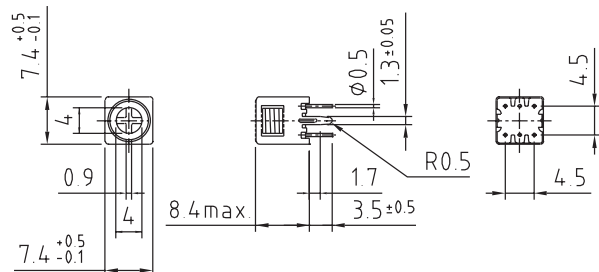


K7-P

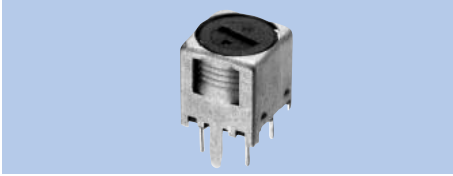


Specifications

- (1) 1~1600μH
- (2) 0.1~20MHz
- (3) F:±2%
L:±5%
- (4) 10~18000pF
- (5) 50~110

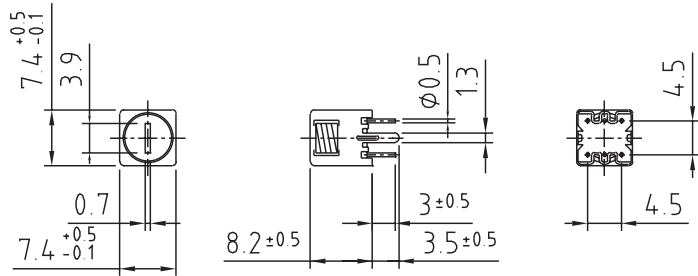


K7-D

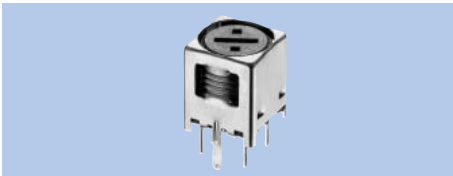


Specifications

- (1) 5~100mH
- (2) 10~300kHz
- (3) F:±2%
L:±5%
- (4) -
- (5) 50~80

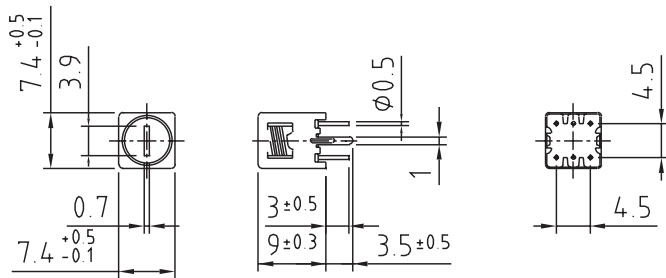


K7-T

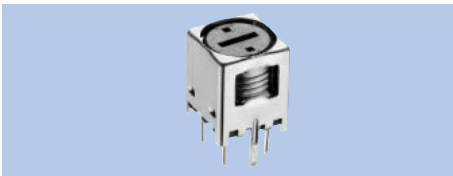


Specifications

- (1) 1~850μH
- (2) 0.1~20MHz
- (3) F:±2%
L:±5%
- (4) 10~430pF
- (5) 60~110

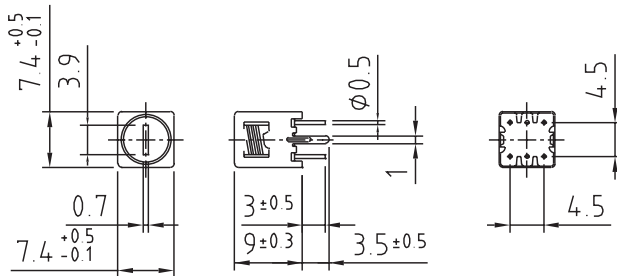


K7-T1

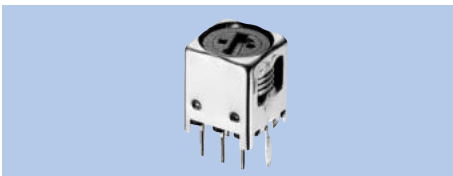


Specifications

- (1) 0.1~6mH
- (2) 10~300kHz
- (3) F:±2%
L:±5%
- (4) -
- (5) 40~70

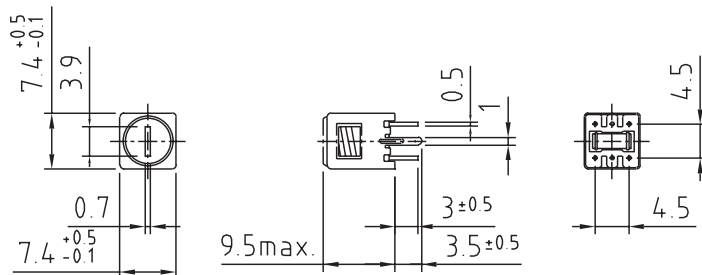


K7-T4



Specifications

- (1) 1~15mH
- (2) 10~300kHz
- (3) F:±2%
L:±5%
- (4) 10~18000pF
- (5) 40~70



- (1) Inductance
- (2) Operational frequency
- (3) Variable range of F & L
- (4) Internal capacitance
- (5) Unloaded Q

