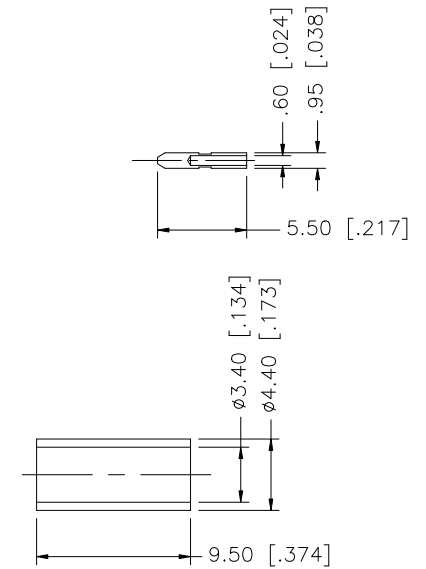
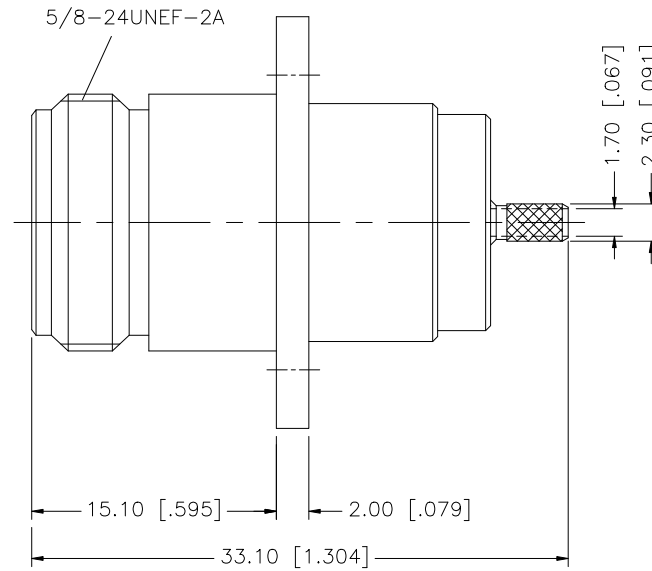
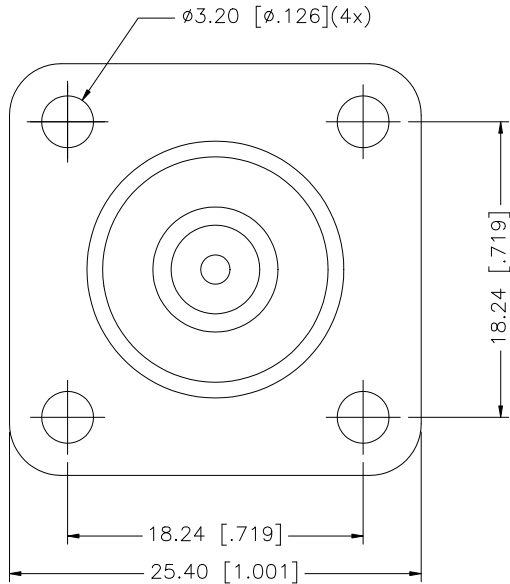
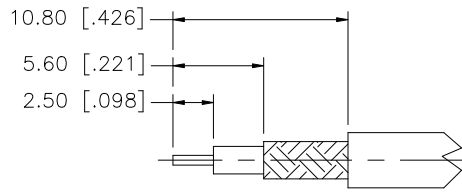


REV.	DATE	DESCRIPTION
NC	08/22/07	INITIAL RELEASE



NOTE:

1. CRIMPED FERRULE HEX CRIMP SIZE .151"

8				<small>UNLESS OTHERWISE SPECIFIED DIMENSIONS ARE IN MILLIMETERS. DIMENSIONS IN [ ] ARE IN INCHES AND FOR CUSTOMER REFERENCE ONLY.</small> <small>UNLESS OTHERWISE SPECIFIED TOLERANCES FOR MILLIMETERS ARE:</small> 0.5 - 8mm ± 0.20mm 8 - 30mm ± 0.40mm 30 - 120mm ± 0.50mm <small>UNLESS OTHERWISE SPECIFIED TOLERANCES FOR INCHES ARE:</small> .020 - .315 ± ± 0.007" .315 - 1.180 ± ± 0.015" 1.180 - 4.724 ± ± 0.020"	APPROVALS	DATE	<h1 style="color: blue;">Amphenol Connex</h1>				
7					DRAWN	G.R.S.					08/22/07
6					CHECKED			<b>PART DESCRIPTION</b> N PANEL CRIMP JACK (316 DOUBLE BRAID CABLE)			
5					ISSUED						
4	FERRULE	COPPER	NEXCOTE		1	SHEET	1 OF 1				
3	CONTACT PIN	PHOS. BRONZE	GOLD	1			<b>DWG. NO.</b> 172246.DWG <b>REV.</b> NC <b>SIZE</b> A <b>SCALE</b> NA				
2	INSULATOR	TEFLON	NATURAL	1							
1	BODY	BRASS	NEXCOTE	1							
DO NOT SCALE DRAWING				CAD FILE C:/172/172246.DWG							