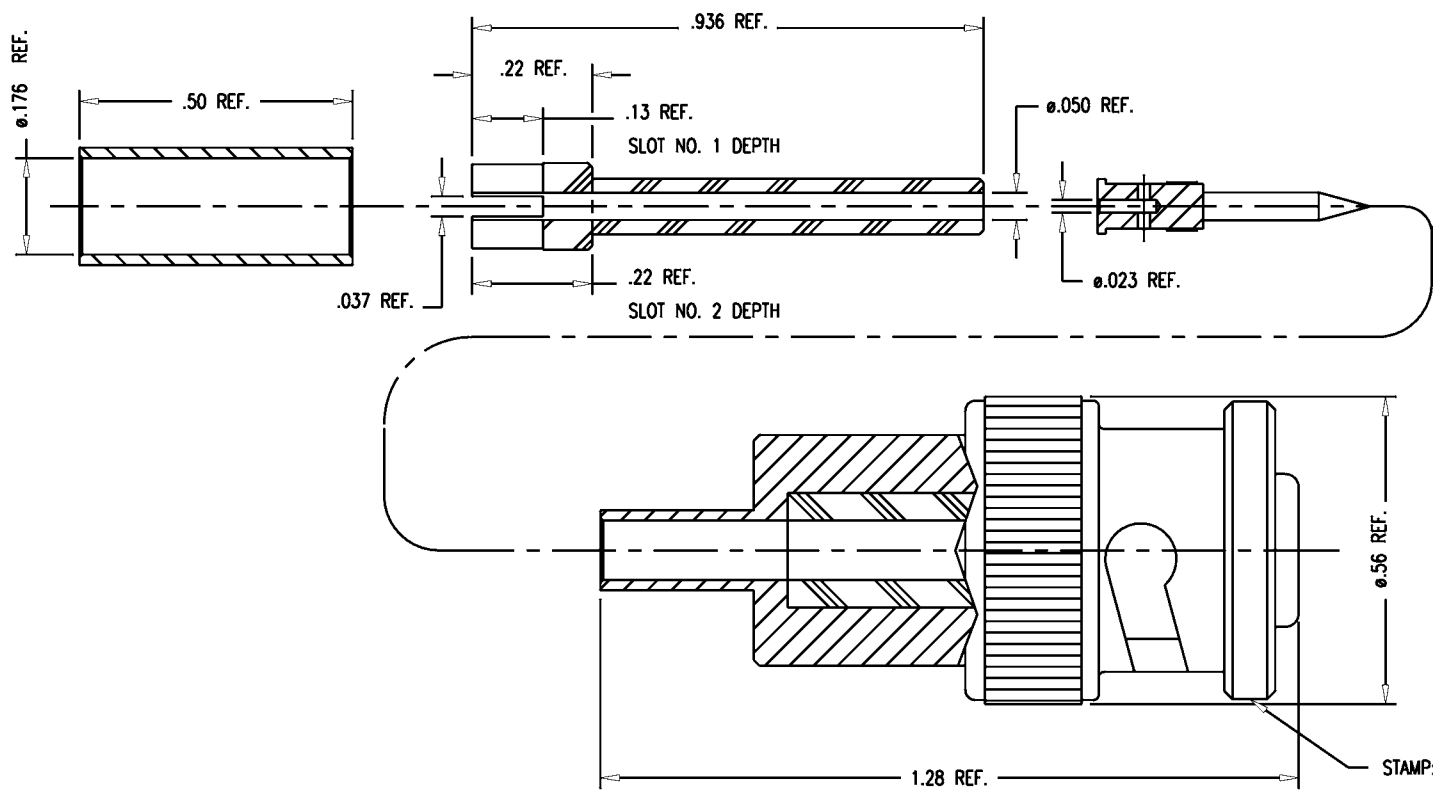


SD



NOTES:

1. FOR CRIMPING USE DIE KTH-2007.
2. INTERFACE PER MIL-STD-348, FIG. 303-1.
3. K-GRIP SLEEVE, CENTER CONTACT AND DELRIN INSULATOR TO BE SUPPLIED UNASSEMBLED.
4. MATERIALS:
 INSULATOR: DELRIN, 150
 INTERFACE INSULATOR: TEFLON, ASTM-D-4894
 GASKET: SIL. RUB., ZZ-R-765
 SPRING WASHER: BER. COP., ASTM-B-196
 K-GRIP SLEEVE: COMMERCIAL BRONZE, ASTM-B-135
 ALL OTHER METAL PARTS: BRASS, ASTM-B16
5. FINISHES:
 CENTER CONTACT } SILVER PLT. PER QQ-S-365
 SPRING WASHER }
 ALL OTHER METAL PARTS: KINGS TARNISH RESISTANT NICKEL FINISH (TR-5)
6. ELECTRICAL CHARACTERISTICS:
 VOLTAGE RATING: 3500 VRMS (5,000 VDC)
 INSULATION RESISTANCE: 5000 MEGOHMS

SD

1685-10-9

REVISIONS	
ISSUE	CHANGES
0	ER 37091 KH 08/07/96
1	CN 37453 A MRM 10/13/97
2	CN 37551 A JW 01/23/98
3	CN 38039 E TML 07/21/00

1685109S	
SCALE 4:1	
APPROX SURFACE AREA	
WAS: E-18961	
USED ON	
REF: CIRCON/ ACMI DWG 03-0026-7 REV. B.	
PLUG, MHV	
DRAWN KH	DATE 09/20/95
DESIGN AR	DATE 09/21/95
APPR.	DATE
KINGS ELECTRONICS CO., INC. ROCK HILL, SOUTH CAROLINA 29730	
1685-10-9	