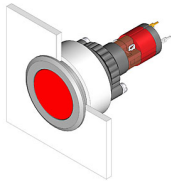


EAO – Your Expert Partner for Human Machine Interfaces

14-743.0292 - Illuminated pushbutton actuator

14-743.0292 - Illuminated pushbutton actuator



Attention: The preview is based on a sample product. This can differ from your current configuration.

Mounting

Design flush
Mounting cut-out Ø 30,5 mm

Front

Front dimension Ø 35 mm
Front shape round

Other Attributes

Weight 0,014 kg
Diode 1N4007 1

Operating-/Indication part

Lens illumination illuminative

IP-Rating

Front protection IP67

Connection Method

Terminal Universal-Solder

Actuator

Switching action Momentary
Housing colour black
Housing material Plastic

Switching element

Switching system Snap-action switching element
Switching current 5 A
Contacts 1 NC + 1 NO
Contact material
Switching voltage 250 V AC

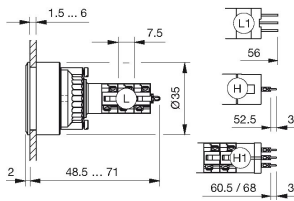
Function

Illuminated pushbutton

EAO – Your Expert Partner for Human Machine Interfaces

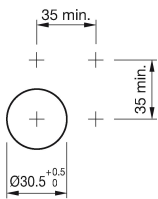
14-743.0292 - Illuminated pushbutton actuator

Dimensions

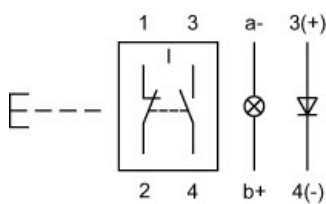


H1 = Universal-Solder terminal

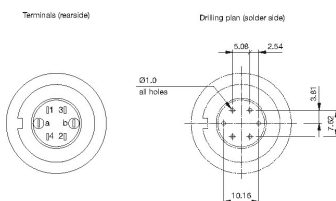
Mounting cut-outs



Wiring diagram



Component layout



Legend

Contacts: NC = Normally closed, NO = Normally open
Switching action: B = Momentary