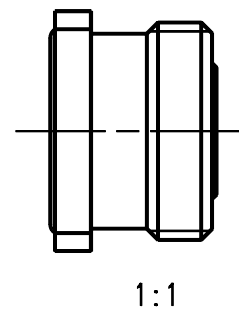
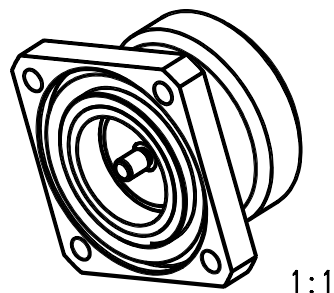
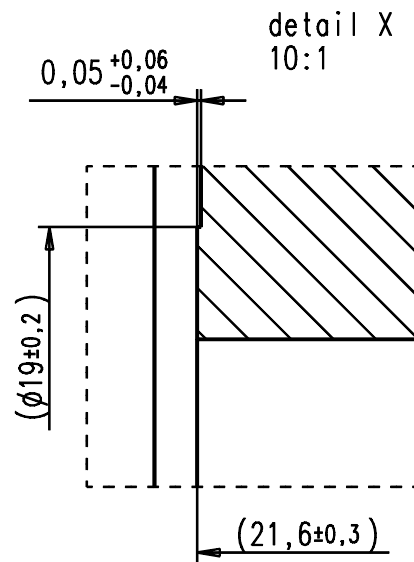
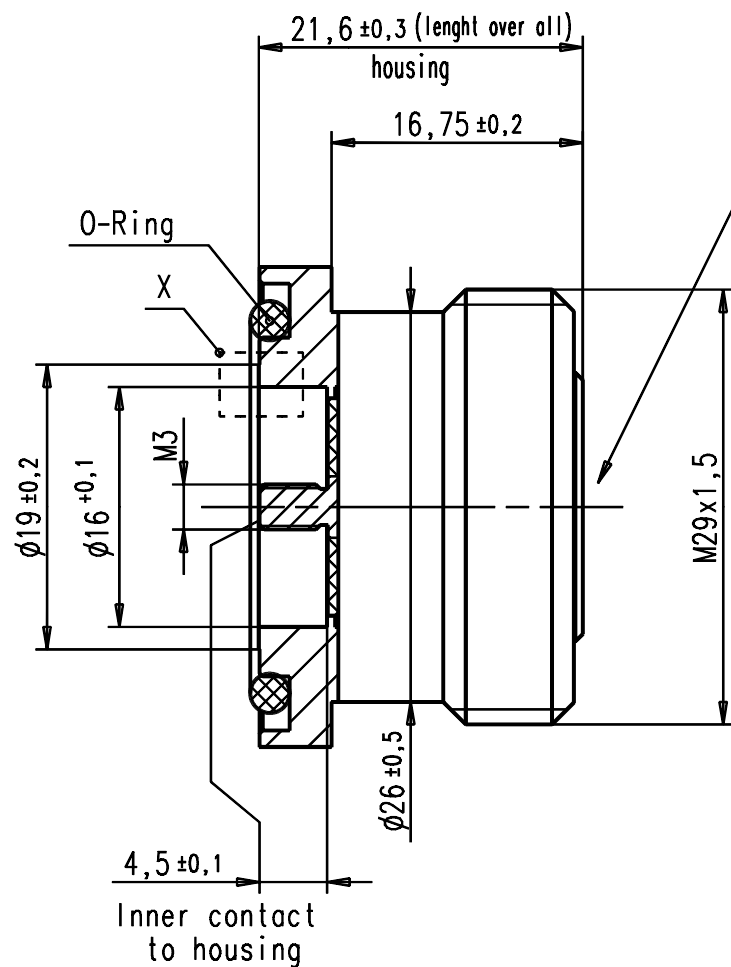


Steckbereich nach IEC 169-4
Mating area acc.to IEC 169-4



Part	Material	Surface
Housing	Copper alloy	Ag 3-5µm
Centre Contact	Copper alloy	Ag 5-8µm
Insulator	PTFE	
Sealing	Silicone rubber	
Mating face sealed: IP68		
Contact captivation torque: min. 45Ncm		

		general tolerance	ISO 2768
		ISO 2768	mH
		date	name
		generate	01.08.03 Mayer
		checked	
		Norm	
		42081	
258/04	b	SW/AF 3 hinzu	16.09.04 Mayer
design	a	Ueberarbeitung	06.08.03 Mayer
nr.	rev.	alteration	date name

scale: 2:1	
Assembly instruction: Stripping dimension:	
7/16-Chassisbuchse	
7/16-Bulkhead jack	
3704.08.2018.19'	Rev. b