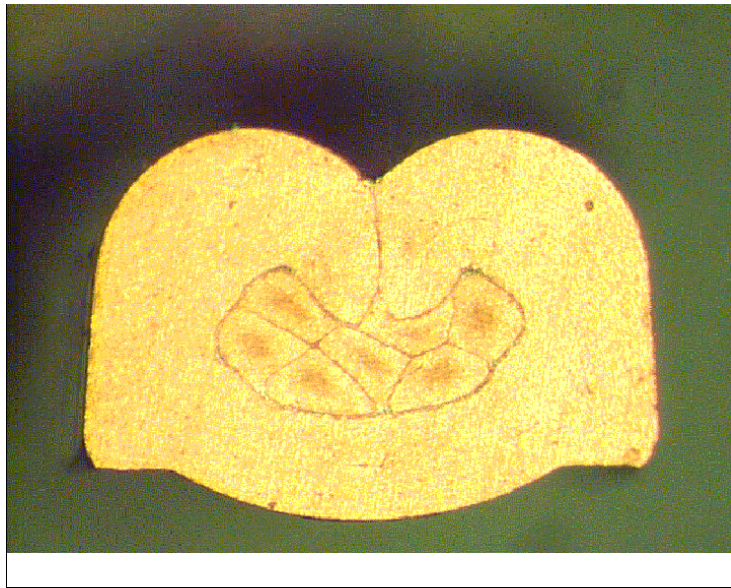




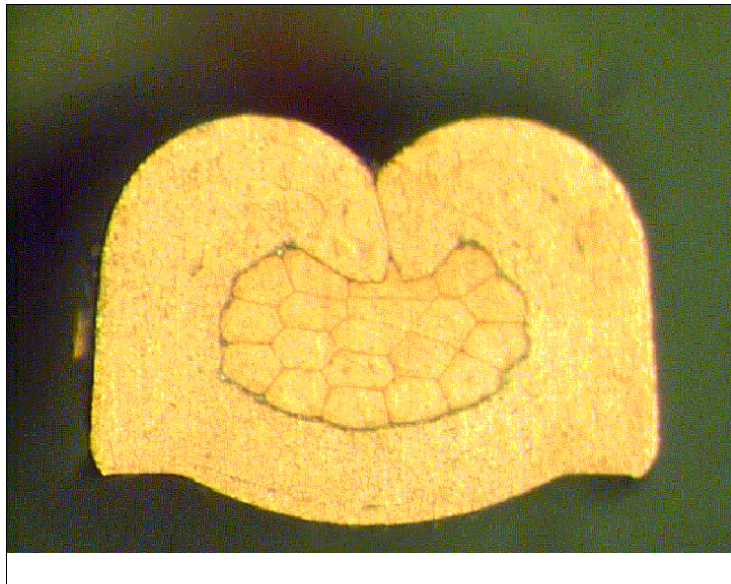
DELPHI PN 15414399



cable:  
 $0,35 \text{ mm}^2 = 7 \times 0,27 \text{ mm}$

crimp height:  
1,05 mm

crimp width:  
1,60 mm



cable:  
 $0,50 \text{ mm}^2 = 19 \times 0,19 \text{ mm}$

crimp height:  
1,15 mm

crimp width:  
1,60 mm