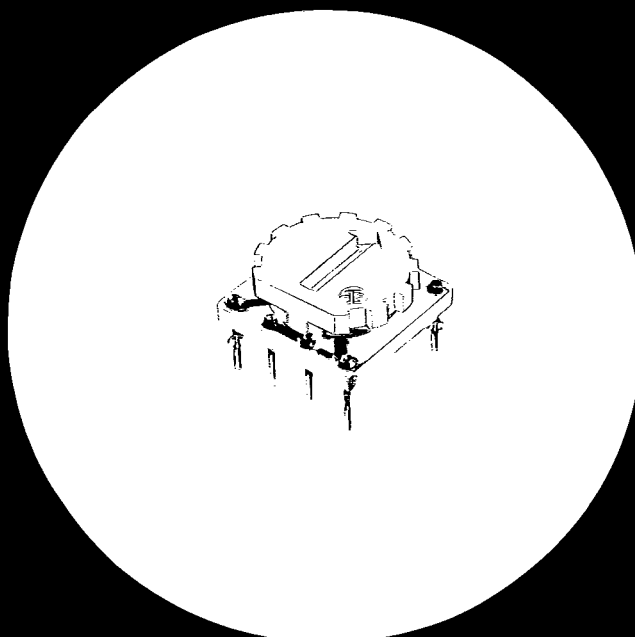


CTS[®]**Series 380**

A-21-03

.460" square,
3/4 watt
cermet trimmers

- Top adjust version
- 3/4 watt at 85°C
- Positive stops
- Stable TC cermet element
- Brass contactor
- Economical



Electrical and Mechanical Specifications

Resistance Range

Standard — 50 ohms through 1 megohm
Special — 20 ohms to 50 ohms and above 1 megohm through 2.5 megohms

Resistance Tolerance

Standard — $\pm 30\%$
Special — to $\pm 10\%$

Power Rating, Watts

2 watts @ 25°C, 3/4 watt @ 85°C derated linearly to no load @ 125°C

Voltage Rating

Across resistor element — 250 VDC, not to exceed power rating

Slider Current

100 MA, not to exceed power rating

Terminal End Resistance

2% or 20 ohms, whichever is greater

Resistance TC in PPM/°C

Standard — ± 250 ppm/°C
Special — ± 100 ppm/°C

Operating Temperature Range

Standard — -55°C to +85°C
Special — -55°C to +125°C

Resistor Material

Cermet thick film

Contactor Material

Brass

Mechanical Rotation

297° $\pm 5^\circ$

Stops

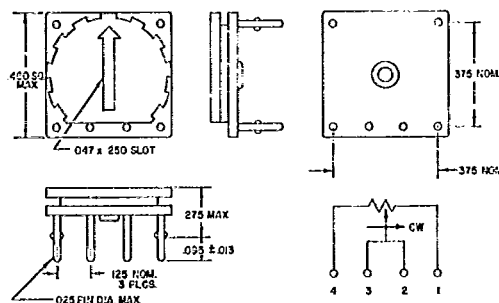
Positive — 12 inch oz. minimum

Turning Torque

Standard — .5 inch oz. minimum

Terminal Pull Strength

5 pounds minimum



GENERAL TOLERANCES:
Decimal Dimensions ± 0.005 "

Environmental Performance Characteristics

TEST	ALLOWABLE RESISTANCE CHANGE	
	MIL-R-22097 Char. "C" ΔR	CTS Maximum ΔR
Load Life — 1000 hours, 1/2 watt @ 85°C, 300V maximum	$\pm 3.0\%$	$\pm 3.0\%$
Rotational Life — 200 cycles with load	$\pm 2.0\%$	$\pm 3.0\%$
High Temperature Exposure — 250 hours at 125°C — no load	$\pm 3.0\%$	$\pm 3.0\%$
Moisture Resistance	$\pm 2.0\%$	$\pm 2.0\%$
Low Temperature Operation	$\pm 2.0\%$	$\pm 2.0\%$
Thermal Shock (-55°C to $+125^{\circ}\text{C}$)	$\pm 2.0\%$	$\pm 2.0\%$
Acceleration	$\pm 1.0\%$	$\pm 1.0\%$
High Frequency Vibration	$\pm 1.0\%$	$\pm 1.0\%$
Shock	$\pm 1.0\%$	$\pm 1.0\%$
Contact Resistance Variation	$\pm 3.0\%^*$	$\pm 3.0\%^*$
Resistance to Soldering	$\pm 1.0\%$	$\pm 1.0\%$

* or 20 ohms whichever is greater

Ordering Information

CTS type 380U is available from stock under the following part numbers:

RESISTANCE VALUE IN OHMS	TYPE AND PART NUMBER 380U
50 $\pm 30\%$	380U500C
100 $\pm 30\%$	380U101C
200 $\pm 30\%$	380U201C
500 $\pm 30\%$	380U501C
1000 $\pm 30\%$	380U102C
2000 $\pm 30\%$	380U202C
5000 $\pm 30\%$	380U502C
10,000 $\pm 30\%$	380U103C
20,000 $\pm 30\%$	380U203C
25,000 $\pm 30\%$	380U253C
50,000 $\pm 30\%$	380U503C
100,000 $\pm 30\%$	380U104C
250,000 $\pm 30\%$	380U254C
500,000 $\pm 30\%$	380U504C
1,000,000 $\pm 30\%$	380U105C

NOTE: Last letter of part number denotes resistance tolerance: A $\pm 10\%$, B $\pm 20\%$, C $\pm 30\%$.

Order From:

CTS CORPORATION, MICROELECTRONICS DIVISION/1201 Cumberland Avenue/
West Lafayette, Indiana 47906/(317) 463-2565