

**DESIGNED & DIMENSIONED
IN MILLIMETERS[INCHES]**

SMA-J-C-X-ST-BH2

GENDER
-J: JACK

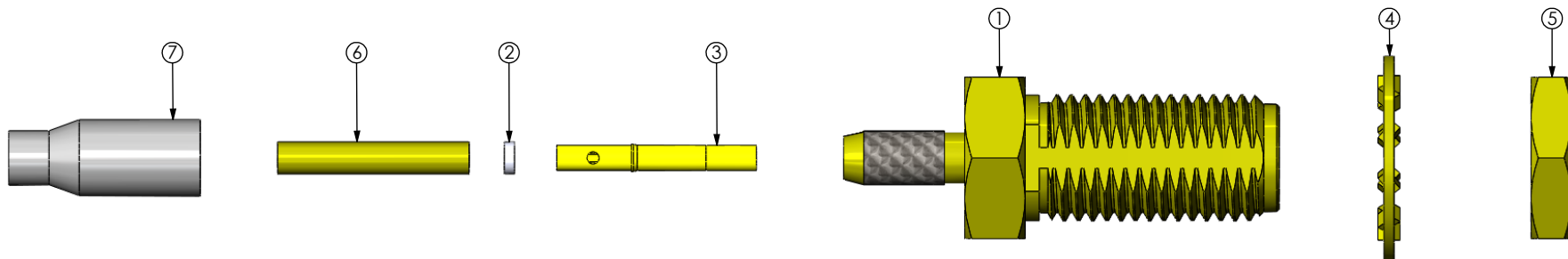
TERMINATION
-BH2: BULKHEAD (RG178)

TYPE
-C: CABLE

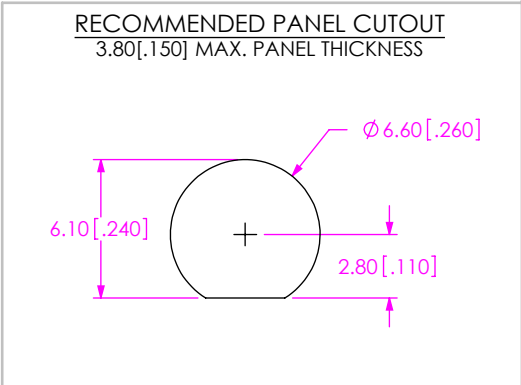
ORIENTATION
-ST: STRAIGHT

PLATING SPECIFICATION
-H: HEAVY GOLD / FLASH GOLD
30µ" Au / 50µ" Ni MIN ON PIN,
3µ" Au / 50µ" Ni MIN ON OUTER CONTACT
(SEE TABLE 1)

DO NOT
SCALE FROM
THIS PRINT



ITEM	COMPONENT	-H
1	SUB-ASSEMBLY	SUB-SMA-J-C-F-ST-BH1
2	INSULATOR	SMA-INS-001
3	PIN	SMA-SKT-002-H
4	LOCK WASHER	SMA-LWAS-001-F
5	NUT	SMA-NUT-001-F
6	INNER FERRULE	SMA-FER-003-N
7	OUTER FERRULE	MCX-FER-004-F



**THIS PRODUCT MANUFACTURED
WITH LEAD-FREE PROCESSING**

UNLESS OTHERWISE SPECIFIED,
DIMENSIONS ARE IN MILLIMETERS.

TOLERANCES ARE:
DECIMALS ANGLES
X.X: ±0.3 [.01] 5°
X.XX: ±0.13 [.005]
X.XXX: ±0.051 [.0020]

PROPRIETARY NOTE

THIS DOCUMENT CONTAINS INFORMATION
CONFIDENTIAL AND PROPRIETARY TO
SAMTEC, INC. AND SHALL NOT BE REPRODUCED
OR TRANSFERRED TO OTHER DOCUMENTS OR
DISCLOSED TO OTHERS OR USED FOR ANY
PURPOSE OTHER THAN THAT WHICH IT WAS
OBTAINED WITHOUT THE EXPRESSED WRITTEN
CONSENT OF SAMTEC, INC.

MATERIAL: DO NOT SCALE DRAWING SHEET SCALE: 3:1

SHELL, FERRULES, NUT, WASHER: BRASS
CONTACT: COPPER ALLOY
DIELECTRIC: PTFE

samtec

520 PARK EAST BLVD. NEW ALBANY, IN 47150
PHONE: 812-944-6733 FAX: 812-948-5047
e-Mail info@SAMTEC.com code 5332

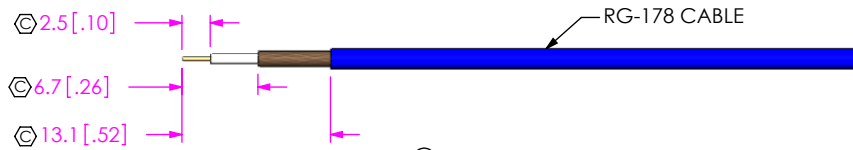
DESCRIPTION:
SMA STR JACK BULKHEAD, RG178- 50 OHM

DWG. NO.
SMA-J-C-X-ST-BH2

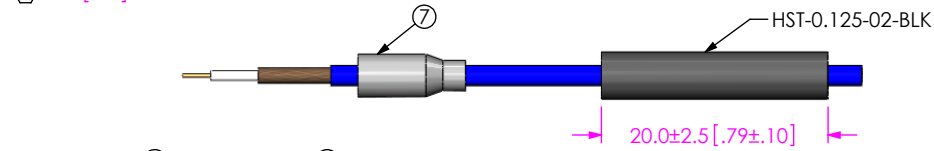
BY: R MUSSER 01/28/2008 SHEET 1 OF 2

NOTES:

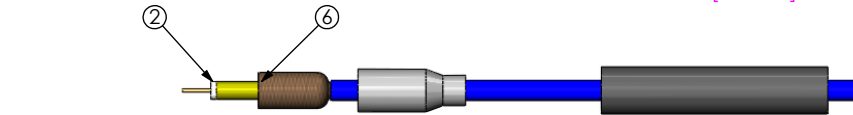
- ⊕ REPRESENTS A CRITICAL DIMENSION.
- MINIMUM PUSHOUT FORCE FOR CENTER CONTACT: 26.69 N [6 LB].
- PRODUCT TO BE PACKAGED PER PACKING STANDARD CO-HD-WI-3040-M.
- NUT AND WASHER TO BE PACKAGED SEPARATELY.



IN-PROCESS 1
STRIP AND TIN INNER AND OUTER CONDUCTOR



IN-PROCESS 2
ADD HEAT SHRINK TUBE AND FERRULE

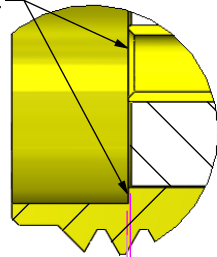


IN-PROCESS 3
FLARE SHIELD, ADD INNER FERRULE & INSULATOR



IN-PROCESS 4
SOLDER CONTACT

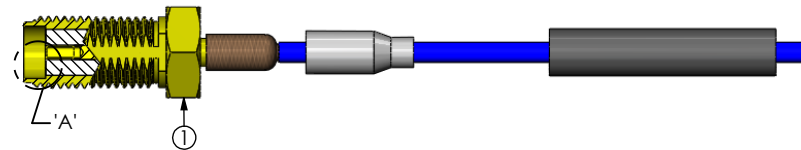
TIP OF CONTACT TO BE FLUSH WITH REFERENCE PLANE OR RECESSED 0.10 [.004] REF.



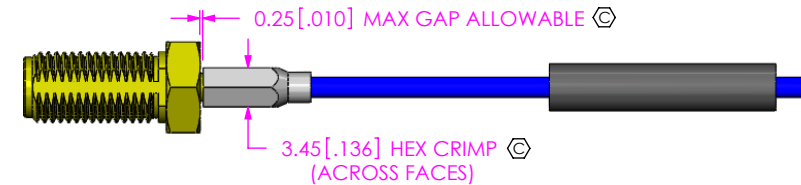
0.05 [.002] REF (TO INSULATOR)

REFERENCE PLANE

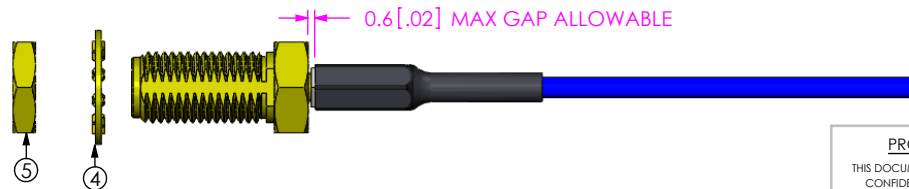
DETAIL 'A'
SCALE 8:1



IN-PROCESS 5
ADD SUB-SMA-J-C-X-ST-BH1



IN-PROCESS 6
CRIMP FERRULE
(USE CRIMP HAND TOOL #CAT-HT-126667-21 OR EQUIVALENT)
(USE .128" HEX DIE)



IN-PROCESS 7
APPLY HEAT SHRINK TUBING

F:\DWG\MISC\MKTG\SMA-J-C-X-ST-BH2-MKT.SLDDRW

PROPRIETARY NOTE

THIS DOCUMENT CONTAINS INFORMATION CONFIDENTIAL AND PROPRIETARY TO SAMTEC, INC. AND SHALL NOT BE REPRODUCED OR TRANSFERRED TO OTHER DOCUMENTS OR DISCLOSED TO OTHERS OR USED FOR ANY PURPOSE OTHER THAN THAT WHICH IT WAS OBTAINED WITHOUT THE EXPRESSED WRITTEN CONSENT OF SAMTEC, INC.

DO NOT SCALE DRAWING

SHEET SCALE: 1:0.666667



520 PARK EAST BLVD, NEW ALBANY, IN 47150
PHONE: 812-944-6733 FAX: 812-948-5047
e-Mail info@SAMTEC.com code 55322

DESCRIPTION:
SMA STR JACK BULKHEAD, RG178- 50 OHM

DWG. NO. SMA-J-C-X-ST-BH2

BY: R MUSSER 01/28/2008 SHEET 2 OF 2