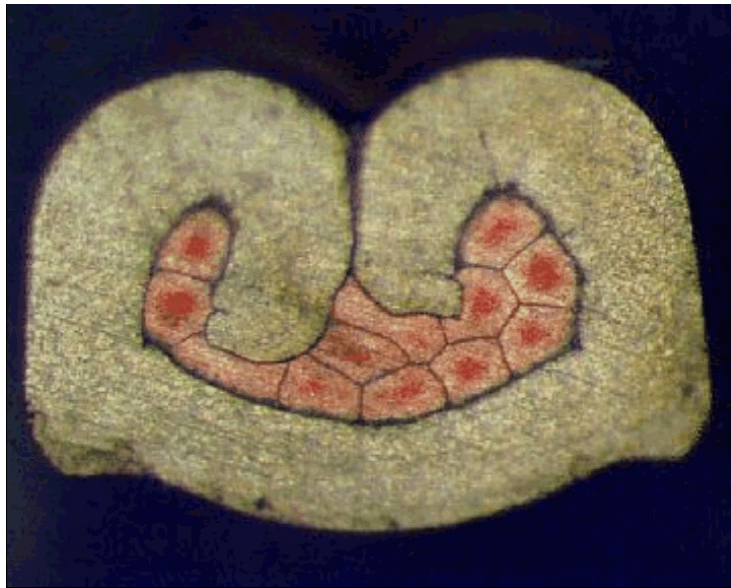


DELPHI PN 15326396



cable:
 $0,35 \text{ mm}^2 = 12 \times 0,21 \text{ mm}$

crimp height:
1,00 mm

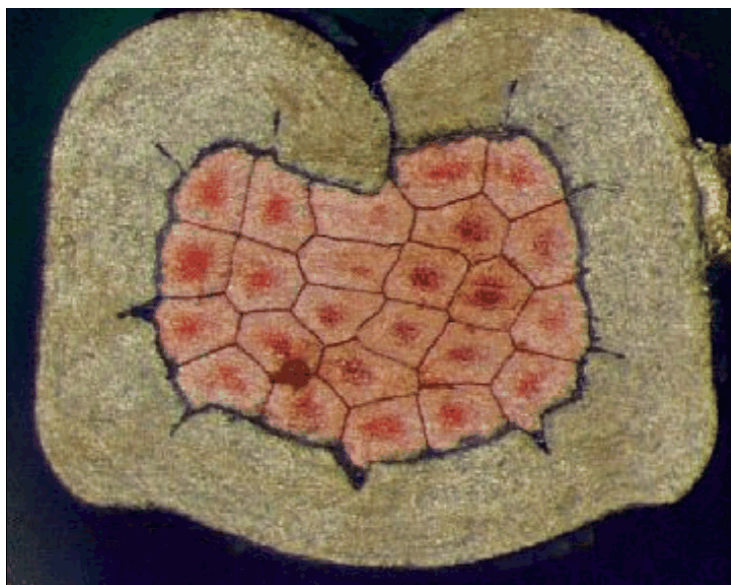
crimp width:
1,55 mm



cable:
 $0,50 \text{ mm}^2 = 16 \times 0,21 \text{ mm}$

crimp height:
1,10 mm

crimp width:
1,60 mm



cable:
 $0,75 \text{ mm}^2 = 24 \times 0,21 \text{ mm}$

crimp height:
1,20 mm

crimp width:
1,60 mm