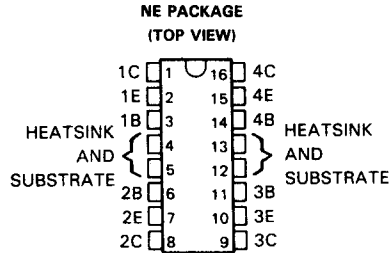


U LN2074, U LN2075 QUADRUPLE HIGH-CURRENT DARLINGTON SWITCHES

D2580, MAY 1980—REVISED SEPTEMBER 1986

- Output Collector Current . . . 1.5 A Max
- 2-W Dissipation Rating
- High Output-Voltage Capability
- Output Sink- or Source-Current Capabilities
- Input Compatible with TTL or 5-V CMOS
- Designed for Interchangeability with Sprague U LN2074 and U LN2075



description

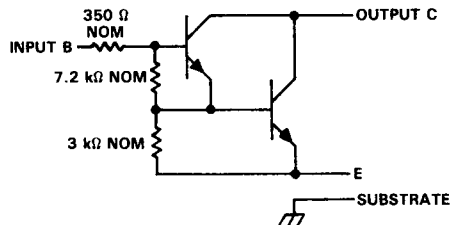
The U LN2074 and U LN2075 are monolithic, quadruple, high-voltage, high-current n-p-n darlington-transistor amplifier devices. They feature high-voltage outputs with collector-current ratings of 1.5 A for each Darlington pair.

The U LN2074 and U LN2075 are unique general-purpose devices, each featuring uncommitted collectors and emitters to allow for either sinking or sourcing the output current. These devices offer the system designer the flexibility of tailoring the circuit to the application. Typical applications include logic buffers, relay drivers, lamp drivers, and hammer drivers.

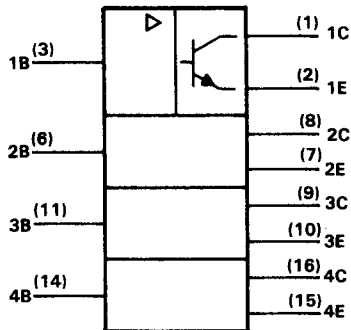
For proper operation, the substrate must be connected to the most negative voltage.

The U LN2074 and U LN2075 are characterized for operation from -20°C to 85°C .

schematic (each switch)



logic symbol†



† This symbol is in accordance with ANSI/IEEE Std 91-1984 and IEC Publication 617-12.

PRODUCTION DATA documents contain information current as of publication date. Products conform to specifications per the terms of Texas Instruments standard warranty. Production processing does not necessarily include testing of all parameters.

TEXAS
INSTRUMENTS

POST OFFICE BOX 655303 • DALLAS, TEXAS 75265

Copyright © 1986, Texas Instruments Incorporated

4-175

ULN2074, ULN2075

QUADRUPLE HIGH-CURRENT DARLINGTON SWITCHES

absolute maximum ratings at 25°C free-air temperature for each switch (unless otherwise noted)

	ULN2074	ULN2075	UNIT
Collector-emitter voltage	50	80	V
Input voltage with respect to substrate	30	60	V
Peak collector current (see Figures 9, 10, and 11)	1.5	1.5	A
Input current	25	25	mA
Total power dissipation at (or below) 25°C free-air temperature (see Note 1)	2075	2075	mW
Operating free-air temperature range	-20 to 85	-20 to 85	°C
Storage temperature range	-55 to 150	-55 to 150	°C
Lead temperature 1,6 mm (1/16 inch) from the case for 10 seconds	260	260	°C

NOTE 1: For operation above 25°C free-air temperature, derate total power linearly to 1079 mW at 85°C at the rate of 16.6 mW/°C.

electrical characteristics at 25°C free-air temperature (unless otherwise noted)

PARAMETER	TEST FIGURE	TEST CONDITIONS	ULN2074		ULN2075		UNIT
			MIN	MAX	MIN	MAX	
$V_{CE(sus)}$ Collector sustaining voltage	1	$V_I = 0.4 \text{ V}$, $I_C = 100 \text{ mA}$	35	100	50		V
I_{CEX} Collector output cutoff current	2	$V_{CE} = 50 \text{ V}$, $T_A = 70^\circ\text{C}$		500			μA
		$V_{CE} = 80 \text{ V}$			100		
		$V_{CE} = 80 \text{ V}$, $T_A = 70^\circ\text{C}$			500		
$I_{I(on)}$ On-state input current	3	$V_I = 2.4 \text{ V}$	2	4.3	2	4.3	mA
		$V_I = 3.75 \text{ V}$	4.5	9.6	4.5	9.6	
$V_{I(on)}$ On-state input voltage	4	$V_{CE} = 2 \text{ V}$, $I_C = 1 \text{ A}$		2		2	V
		$V_{CE} = 2 \text{ V}$, $I_C = 1.5 \text{ A}$, See Note 2		2.5		2.5	
$V_{CE(sat)}$ Collector-emitter saturation voltage	5	$I_I = 625 \mu\text{A}$, $I_C = 500 \text{ mA}$		1.1		1.1	V
		$I_I = 935 \mu\text{A}$, $I_C = 750 \text{ mA}$		1.2		1.2	
		$I_I = 1.25 \text{ mA}$, $I_C = 1 \text{ A}$		1.3		1.3	
		$I_I = 2 \text{ mA}$, $I_C = 1.25 \text{ A}$, See Note 2		1.4			
		$I_I = 2.25 \text{ mA}$, $I_C = 1.5 \text{ A}$, See Note 2				1.5	

NOTE 2: These parameters must be measured on one output at a time using pulse techniques, $t_w = 10 \text{ ms}$, duty cycle $\leq 10\%$.

switching characteristics at 25°C free-air temperature, $V_{CC} = 5 \text{ V}$

PARAMETER	TEST CONDITIONS	MIN	TYP	MAX	UNIT
t_{PLH} Propagation delay time, low-to-high-level output	See Figure 6			1	μs
t_{PHL} Propagation delay time, high-to-low-level output				1.5	μs

PARAMETER MEASUREMENT INFORMATION

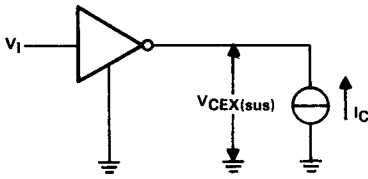


FIGURE 1. $V_{CE(sus)}$

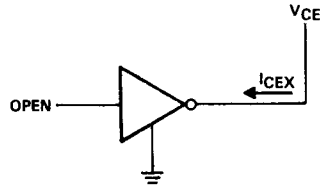


FIGURE 2. I_{CEX}

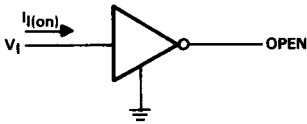


FIGURE 3. $I_{1(on)}$

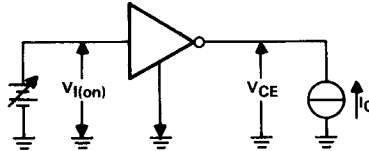


FIGURE 4. $V_{1(on)}$

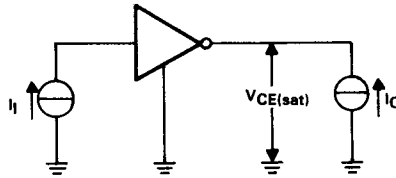
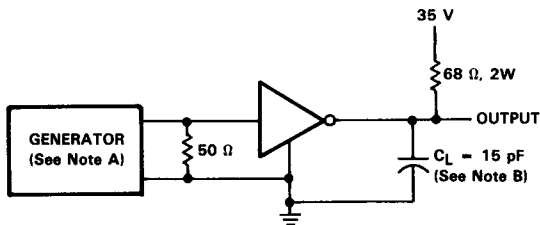
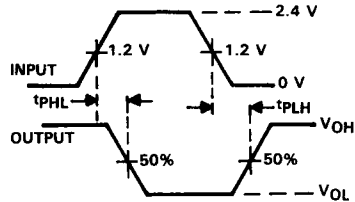


FIGURE 5. $V_{CE(sat)}$



TEST CIRCUITS



VOLTAGE WAVEFORMS

NOTES: A. The input pulse is supplied by a generator having the following characteristics: PRR = 50 kHz, duty cycle = 10%, $Z_o = 50 \Omega$.
 B. C_L includes all probe and stray capacitance.

FIGURE 6. SWITCHING CHARACTERISTICS

**ULN2074, ULN2075
QUADRUPLE HIGH-CURRENT DARLINGTON SWITCHES**

ELECTRICAL CHARACTERISTICS

INPUT CURRENT
vs
INPUT VOLTAGE

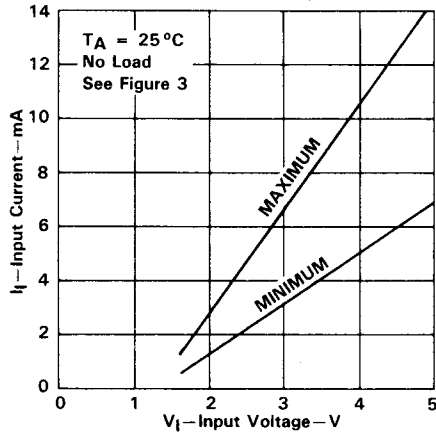


FIGURE 7

COLLECTOR CURRENT
vs
BASE CURRENT

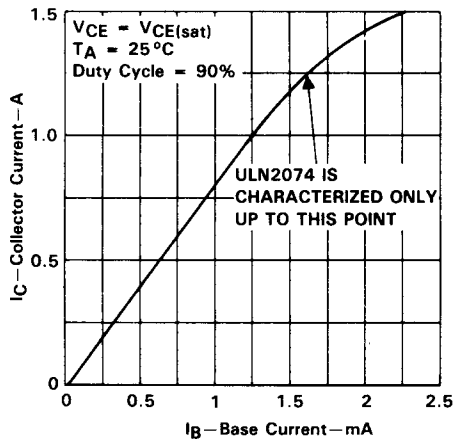


FIGURE 8

THERMAL INFORMATION

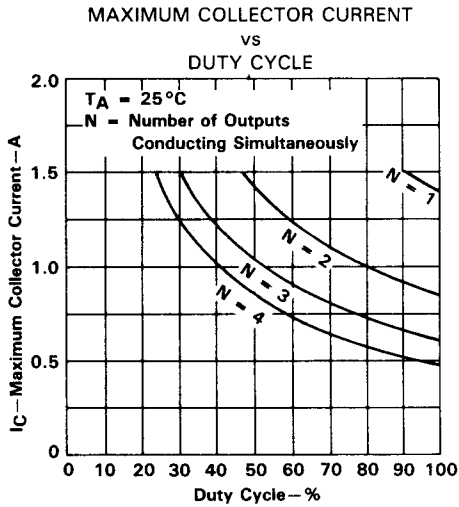


FIGURE 9

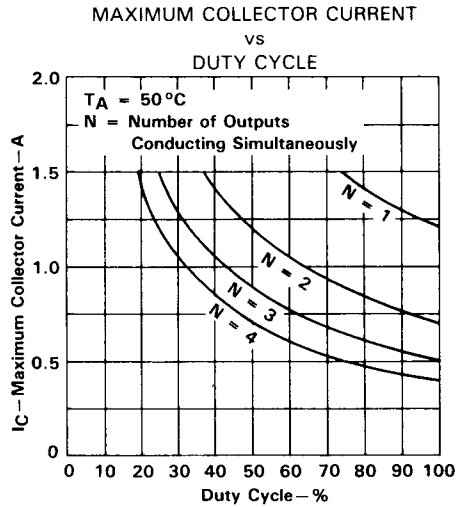


FIGURE 10

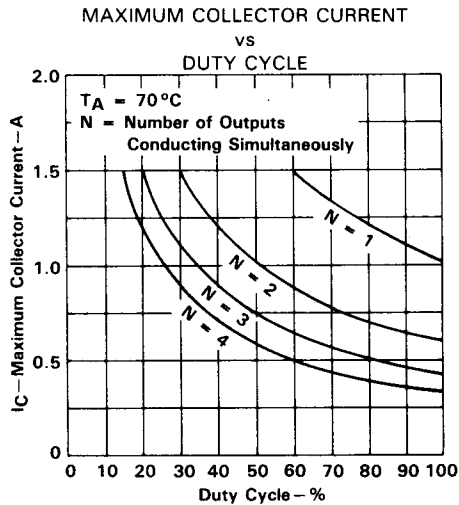


FIGURE 11

**ULN2074, ULN2075
QUADRUPLE HIGH-CURRENT DARLINGTON SWITCHES**

APPLICATION INFORMATION

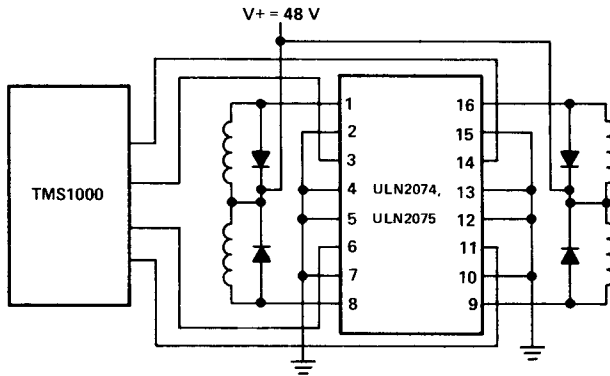


FIGURE 12. RELAY DRIVER INTERFACE WITH EXTERNAL CLAMP DIODES