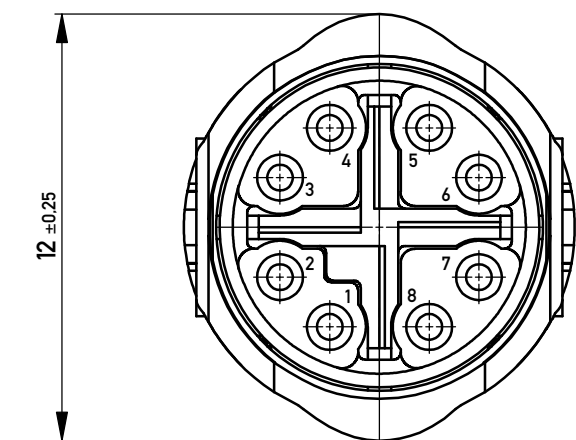
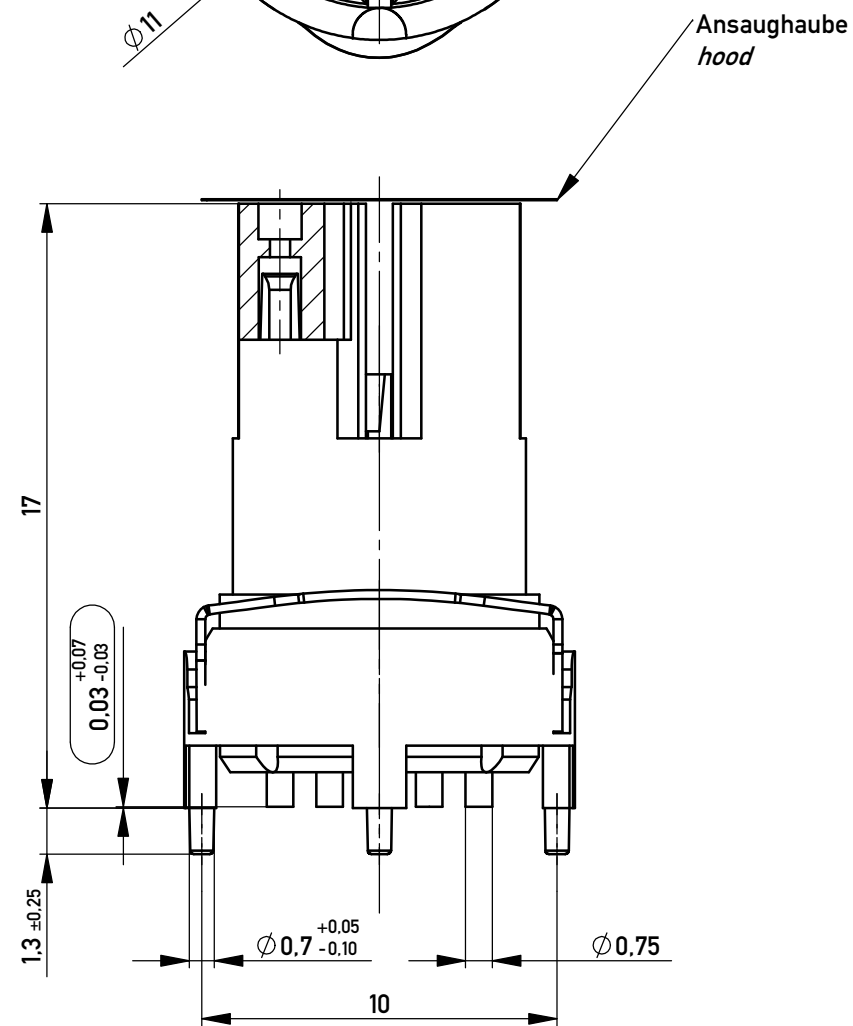
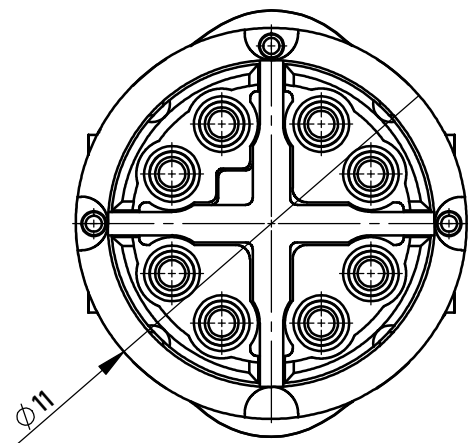
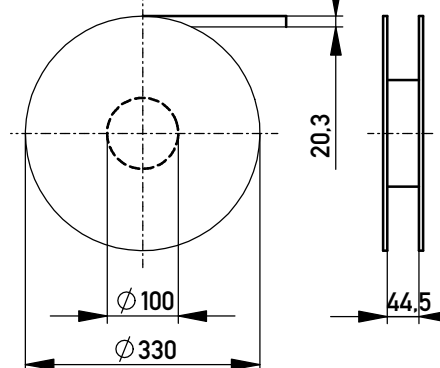
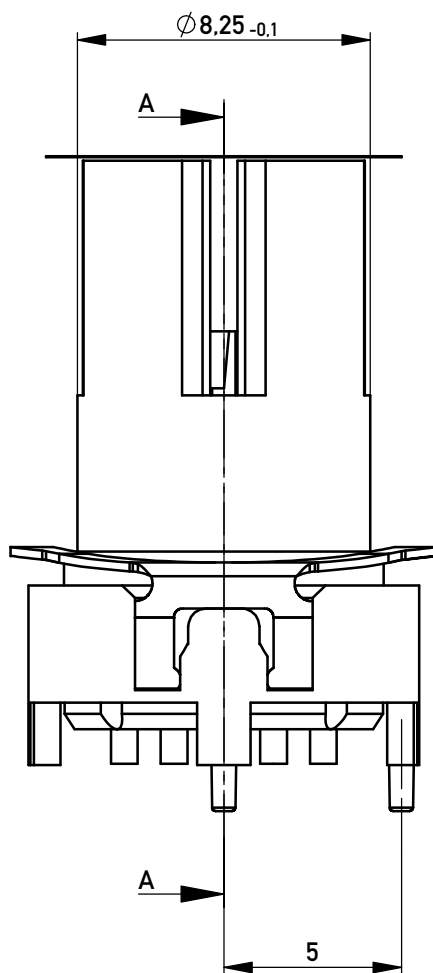


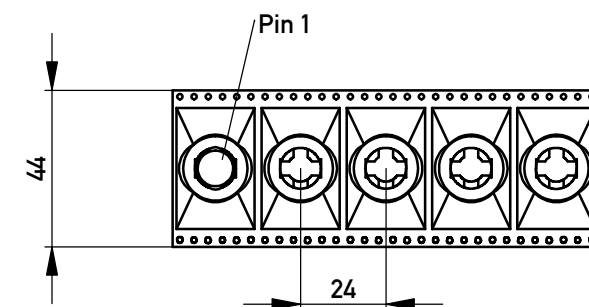
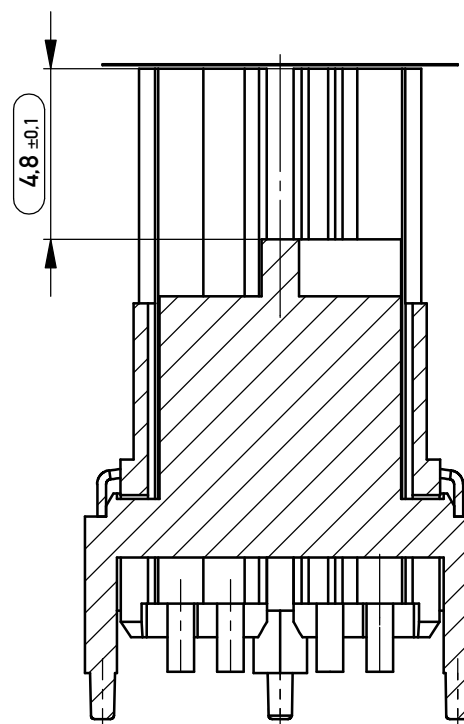
Verpackt in Gurtverpackung - *Tape on Reel Packaging*  
 Verpackungseinheit: 100 Stück - *Packaging unit: 100 pcs*



Ansicht ohne Ansaughaube/  
 view without hood

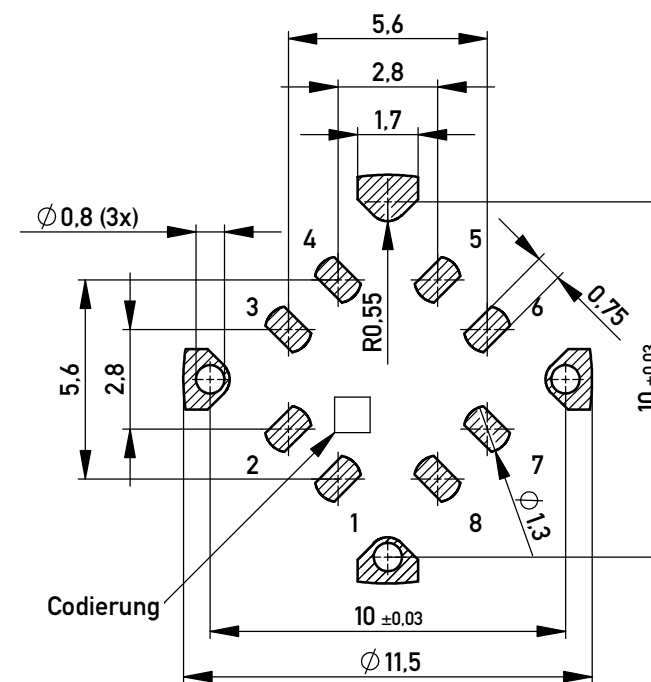


Schnitt A-A



Abspulrichtung - *Reel off Direction*

Layout - Vorschlag (1.6mm Abstand Masse-Signal)  
 PCB - *Layout proposal (1.6mm clearance ground-signal)*



Koplanarität aller Kontakte  $\leq 0.1$  mm  
*Coplanarity of all contacts  $\leq 0.1$  mm*  
 Fehlende Maße und Angaben siehe DIN EN 61076-2-109  
*Missing information and dimensions per DIN EN 61076-2-109*

394811	M12 8 Pol CAT6A SMD	Gurtverp. / tape and reel
Ident.-Nr.:	Type	Bemerkung

Information: All rights reserved. Only for Information. To ensure that this is the latest version of this drawing, please contact one of the ERNI companies before using.	Tolerances All Dimensions in mm	Scale 5:1	Designation <b>Federleiste M12 8 Pol CAT6A SMD / THR</b>
	Subject to modification without prior notice. Drawing will not be updated.		
c	09.05.2011	Class	M12
Index	Date		

Copyright by ERNI GmbH  
 Proprietary notice pursuant to ISO 16016 to be observed.