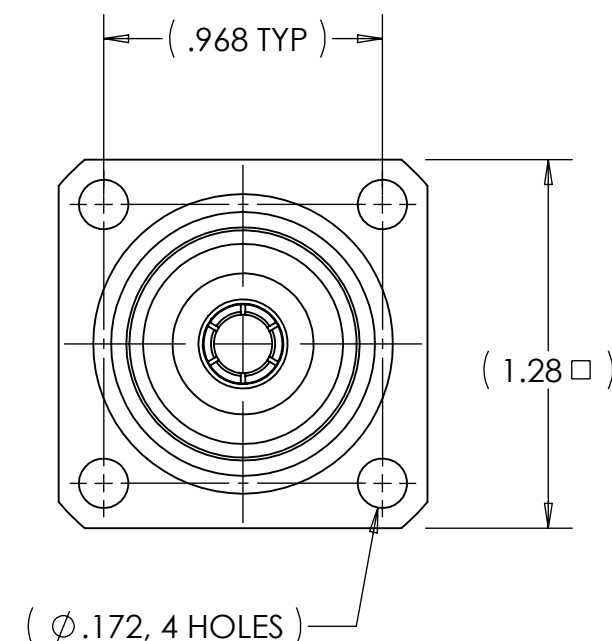
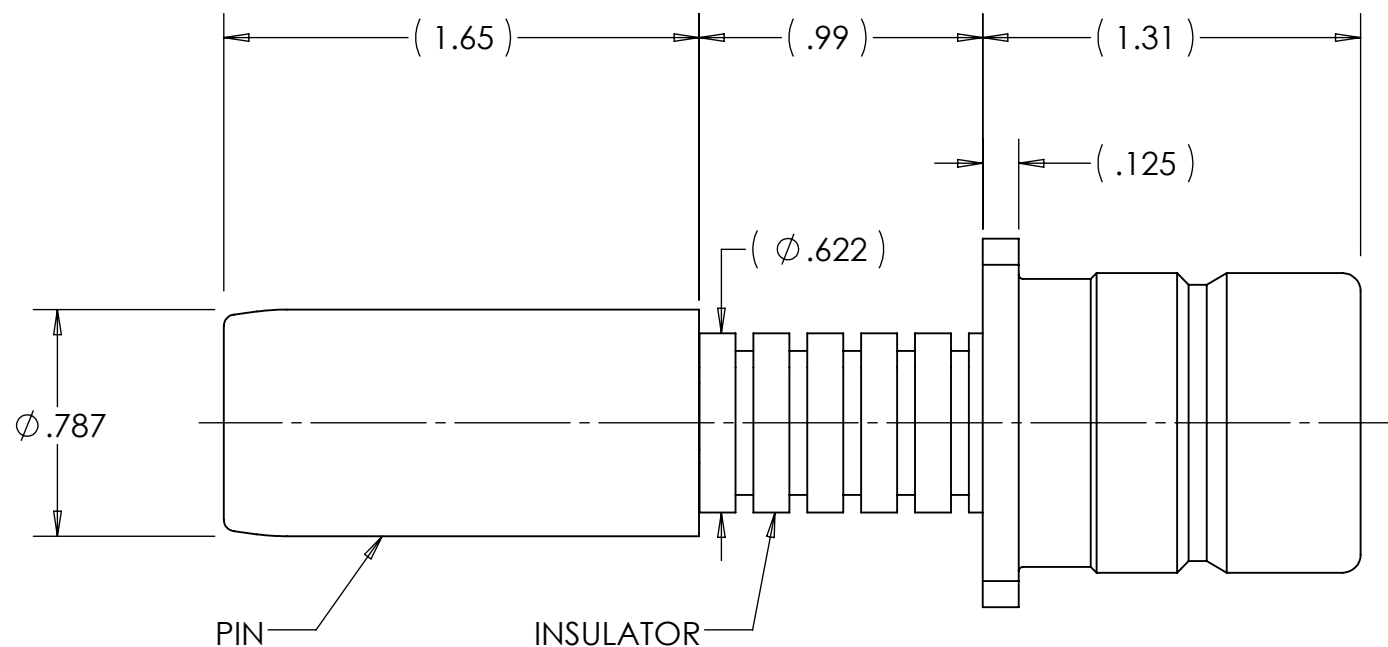
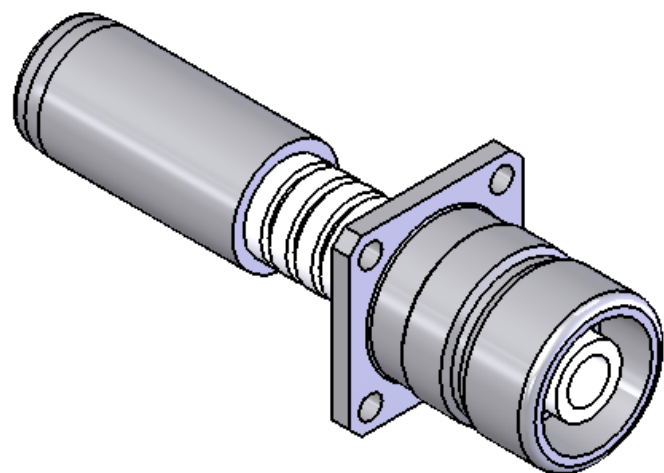


This document, including the design, configuration and mechanical features revealed herein are the sole, confidential and proprietary property of TRU Corporation. Reproduction or use thereof, in whole or part, is prohibited without the prior written consent of TRU Corporation.

REV.	DESCRIPTION	DATE	APPROVED
-	ORIGINAL ISSUE	02/05/09	AM
A	CHANGE PER ECO 3742	03/19/09	AM
B	CHANGED PER ECO-3941	11/3/10	AM



ENGINEERING DATA

MECHANICAL:
INTERFACE: SQS(f) PER TRU STANDARD

MATERIAL:
CONTACT: BERYLLIUM COPPER
PIN: BRASS
HOUSING: BRASS
INSULATOR: PTFE

FINISH:
CONTACT & PIN: SILVER PLATED
HOUSING: NICKEL PLATED

NOTES:

- UNLESS OTHERWISE SPECIFIED; ALL DIMENSIONS ARE FOR REFERENCE ONLY.
- AMAT P/N: 0190-32850 REV 03

MATERIAL	DO NOT SCALE DRAWING	DRAWN AM	DATE 02/02/09	TRU CORPORATION 245 LYNNFIELD STREET, PEABODY, MA 01960 The Custom Interconnect Leader™
	UNLESS OTHERWISE SPECIFIED: DIMENSIONS ARE IN INCHES TOLERANCES: FRACTIONS: ±1/64 .XX : ±.01 .XXX: ±.005 ANGLES: ±1/2° MACHINED SURFACES: 63/√	ENG APPR. AM	DATE 02/02/09	
COMMENTS:		THIRD ANGLE PROJECTION	MFG APPR.	DATE
	OTHER APPR.		DATE	
surface area: sq inch	weight: lbs	SIZE B DWG. NO. TRU-11310 REV B		CAGE CODE: 92180 SCALE: 3:2 SHEET 1 OF 1