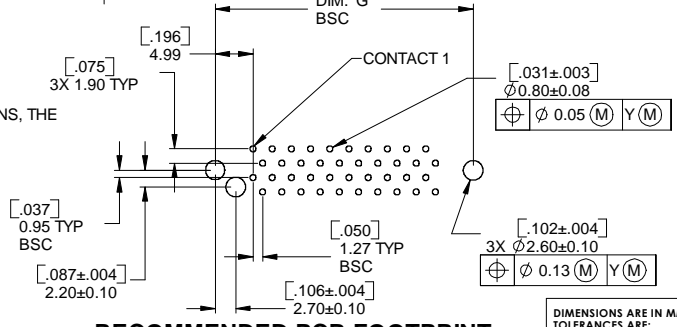
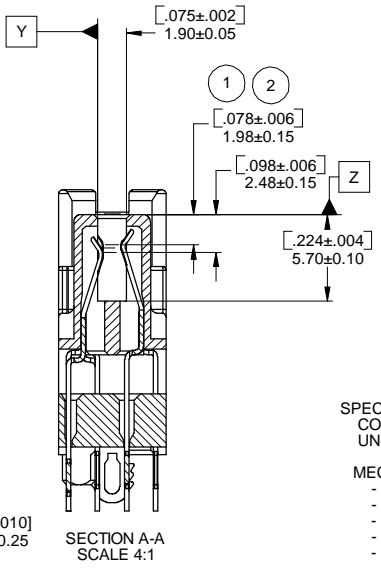
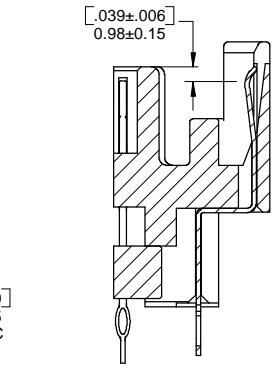
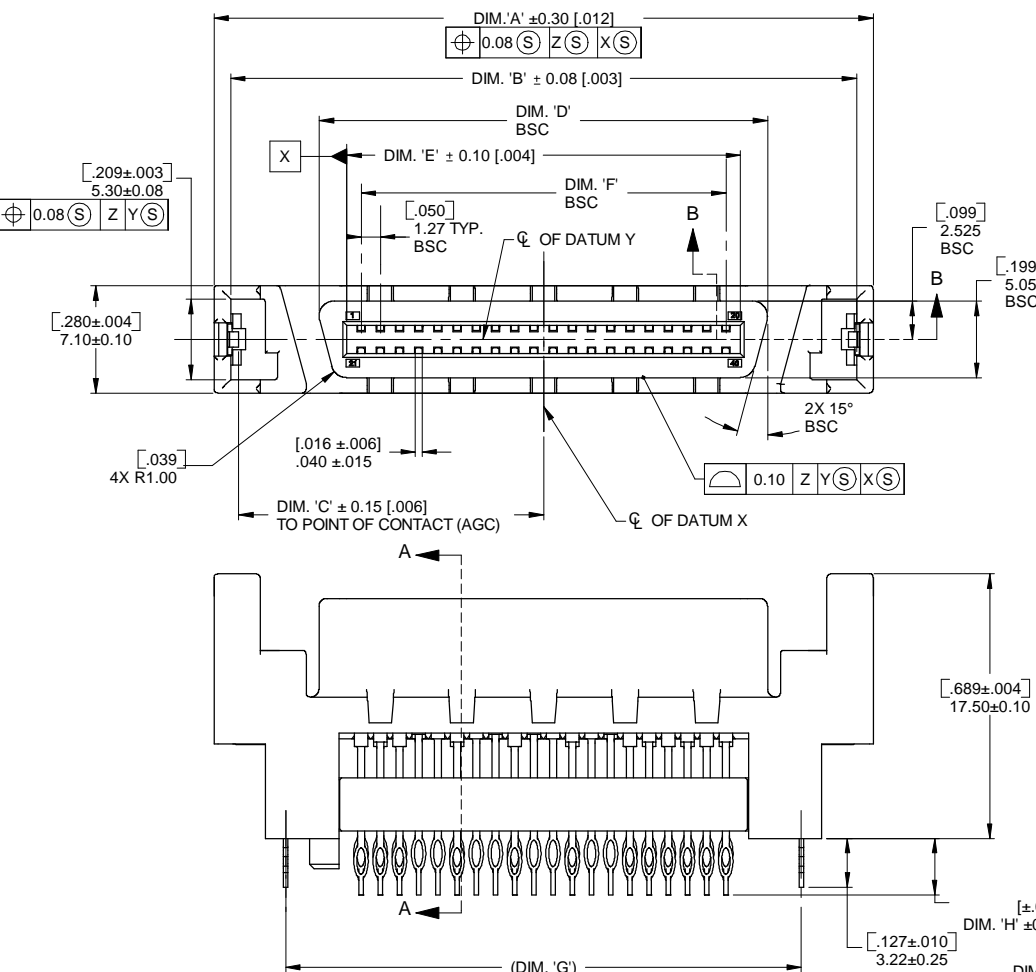


PART NO. CA-XXSCA2-XF-22



REVISIONS				
LTR	DESCRIPTION	DATE	APPROVED	
A	INITIAL RELEASE SEE DO 4793	AJ	3-21-02	L.F.
B	SEE DO 4879	CP	6-14-02	A.J.

CA-XXSCA2-XF-22

- NO. OF CONTACT POSITIONS**
40
80
- SINGLE CONNECTOR ATTACHMENT**
- TAIL LENGTH (DIM 'H')**
BLANK = 3.43 [.135]
2 = 3.79 [.149]
3 = 4.60 [.181]
- PLATING**
CONTACT:
MATING AREA : .76um [30uin] GOLD
TAIL AREA : 3.81um [150uin] TIN/LEAD
UNDERPLATE : 1.27um [50uin] NICKEL
CLIP : 3.81um [150uin] TIN/LEAD OVER
1.27um [50uin] NICKEL
- TAIL CONFIGURATION**
EXTENDED HEIGHT, PRESS FIT

SPECIFICATIONS:
CONFORMS TO SFF-8451 SPECIFICATIONS FOR SCA-2 UNSHIELDED CONNECTORS

- MECHANICAL**
 - MATING FORCE : 90g MAX. PER CONTACT
 - UNMATING FORCE : 15g MIN. PER CONTACT
 - DURABILITY : 500 CYCLES MINIMUM
 - CONTACT MATERIAL : PHOSPHOR BRONZE
 - INSULATOR MATERIAL : HIGH TEMPERATURE THERMOPLASTIC BLACK, UL94V-0
 - CLIP MATERIAL : BRASS
 - CONTACT PLATING:
MATING AREA : 0.00076 [30uin] GOLD
TAIL AREA : 0.0038 [150uin] TIN/LEAD
UNDERPLATE : 0.0013 [50uin] NICKEL
 - CLIP PLATING : 0.0038 [150uin] TIN/LEAD OVER
0.0013 [50uin] NICKEL

- ENVIRONMENTAL**
 - TEMPERATURE RANGE : -55°C TO 105°C
- ELECTRICAL**
 - VOLTAGE RATING : 250V AC
 - DIELECTRIC WITHSTANDING VOLTAGE : 500V DC FOR 1 MIN.
 - INSULATOR RESISTANCE : >1000 MEGOHMS @ 250 Vrms
 - CONTACT RESISTANCE : <35 MILLIOHMS
 - CURRENT RATING : 1 AMP

3 DIMENSIONS AND GEO. TOLERANCES PER SCA-2 SPECIFICATION RELEASED BY SFF COMMITTEE. IN CASE OF ROUND OFF DISCREPANCIES IN DUAL DIMENSIONS, THE METRIC DIMENSIONS IN THE CURRENT REVISION OF SFF-8451 SPECIFICATION SHOULD BE USED.

- ② (80 POS. CONNECTOR) THE FOLLOWING CONTACTS: 1,36,37,38,39,40,41, 42,43,45,46,75,76,77,78,79,80 ARE LONG AND FIRST TO MATE. REMAINING CONTACTS ARE SHORT AND LAST TO MATE. SEE SECTION A-A
- ① (40 POS. CONNECTOR) THE FOLLOWING CONTACTS: 21, 22, 23, 26, 29, 32, 35-40 ARE LONG AND FIRST TO MATE. REMAINING CONTACTS ARE SHORT AND LAST TO MATE. SEE SECTION A-A

NOTES: UNLESS OTHERWISE SPECIFIED

TABULATION

NO. OF POSITIONS	A		B		C		D		E		F		G	
	in.	mm.	in.	mm.	in.	mm.	in.	mm.	in.	mm.	in.	mm.	in.	mm.
40	1.717	43.60	1.630	41.40	0.791	20.10	1.168	29.67	1.025	26.03	0.950	24.13	1.343	34.11
80	2.717	69.00	2.630	66.80	1.291	32.80	2.168	55.07	2.025	51.43	1.950	49.53	2.343	59.51

DIMENSIONS ARE IN MM TOLERANCES ARE:
DECIMALS ANGLES
.XX ±.25 ±1°
.XXX ±.15

DIMENSIONS IN BRACKETS [X.XXX] ARE IN INCHES TOLERANCES ARE:
DECIMALS ANGLES
.XX ± 0.010 ±1°
.XXX ± 0.006

DO NOT SCALE DRAWING

APPROVALS	DATE
DRAWN A.JOCHEN	3-21-02
CHECKED L.FONG	3-21-02

CA CIRCUIT ASSEMBLY CORP.
18 THOMAS ST., IRVINE, CALIFORNIA 92618-2777

SOCKET ASSEMBLY
EXT. HEIGHT, PRESS FIT 40 & 80 POS.
SCA-2

SIZE	CODE IDENT NO.	DRAWING NO.	REV.
C	52072	610287	B

SCALE: 4:1 SHEET 1 OF 1