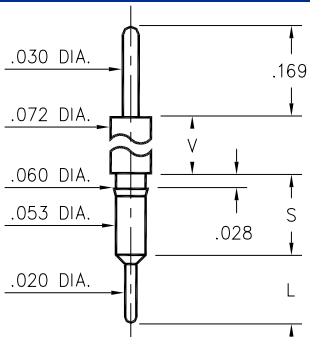


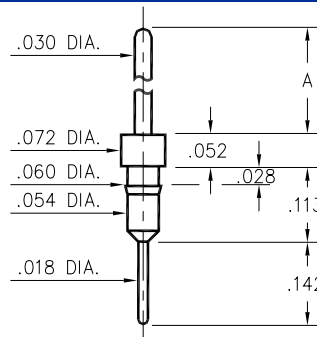
### 3400 ⇒ 3402/3405/3410



Basic Part Number	Shoulder Height V	Length S	Length L
3402-0	.052	.138	.115
3401-0	.100	.136	.115
3405-0	.169	.146	.115
3400-0	.481	.145	.115
3410-0	.934	.136	.124

**34XX-0-00-XX-00-00-03-0**  
Press-fit in .057 mounting hole

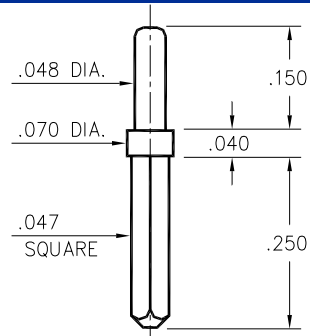
### 3411



Basic Part Number	Pin Length A
3411-0	.417
3411-1	.217

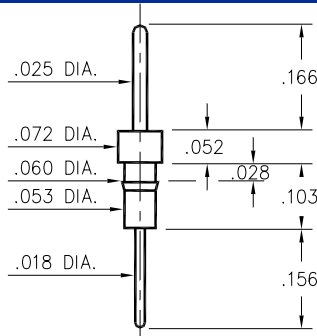
**3411-X-00-XX-00-00-03-0**  
Press-fit in .057 mounting hole

### 0600



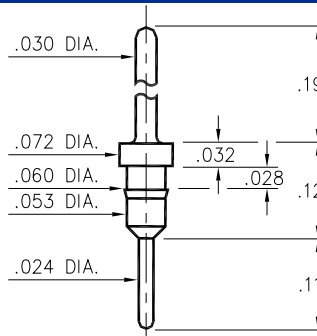
**0600-0-05-XX-00-00-01-0**  
Solder mount in .052 mounting hole

### 0290



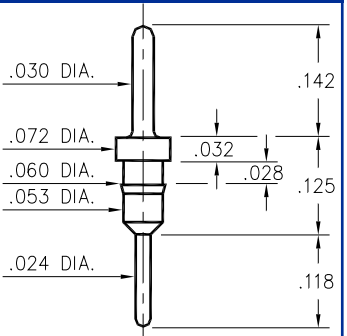
**0290-0-00-XX-00-00-03-0**  
Press-fit in .057 mounting hole

### 7007



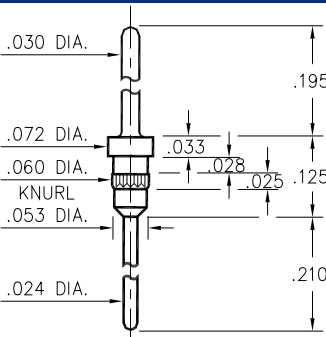
**7007-0-00-XX-00-00-03-0**  
Press-fit in .057 mounting hole

### 5016



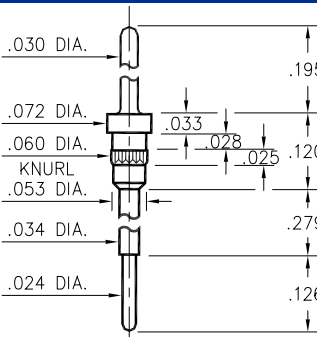
**5016-0-00-XX-00-00-03-0**  
Press-fit in .057 mounting hole

### 5005



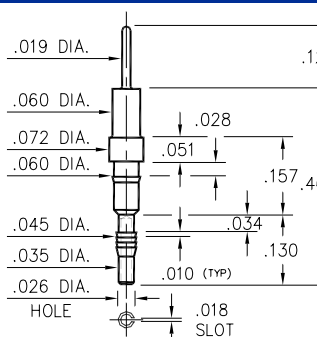
**5005-0-00-XX-00-00-03-0**  
Press-fit in .057 mounting hole

### 5107



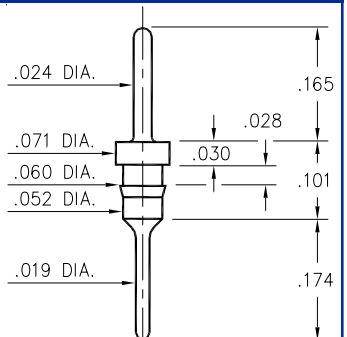
**5107-0-00-XX-00-00-03-0**  
Press-fit in .057 mounting hole

### 5604



**5604-0-01-XX-00-00-03-0**  
Compliant press-fit in .040±.003 plated hole. For .060→.100 thick board.

### 8919



**8919-0-00-XX-00-00-03-0**  
Press-fit in .057 mounting hole

## SPECIFICATIONS

**PIN MATERIAL:**  
Brass Alloy 360, 1/2 Hard  
(Except where noted)

**DIMENSION IN INCHES**  
**TOLERANCES ON:**  
LENGTHS: ±.005  
DIAMETERS: ±.002  
ANGLES: ± 2°

**ORDER CODE: XXXX - X - 0X - XX - 00 - 00 - 0X - 0**

**BASIC PART #** →

**SPECIFY PIN FINISH:**  
**01** 200µ" TIN/LEAD OVER NICKEL  
**15** 10µ" GOLD OVER NICKEL  
**21** 20µ" GOLD OVER NICKEL  
**34** 50µ" GOLD OVER NICKEL