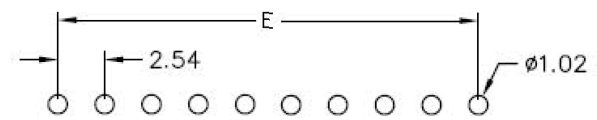
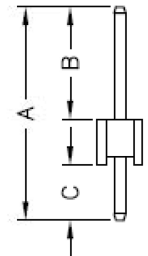
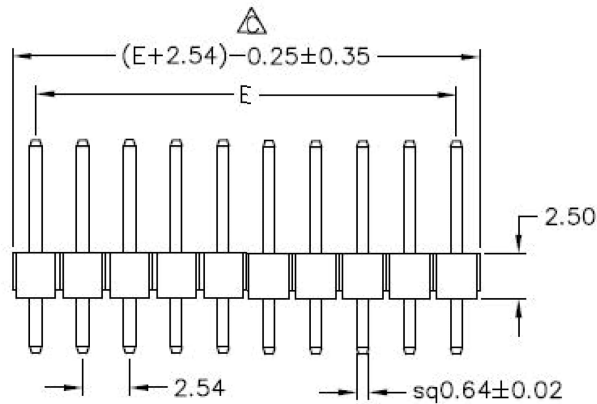
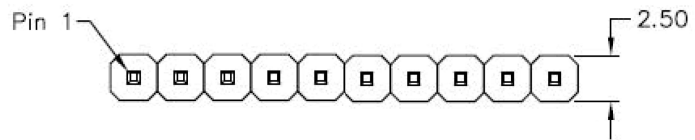


RoHS Compliance



Recommended P.C.B Layout

MATERIAL

Insulator: NY6T UL94-V0
Contact Pin : Brass

SPECIFICATION

Current Rate : 8 AMP PER PIN(20AWG)
Insulation Resistance : 5000MΩMin. at DC 500V
Contact Resistance : 20mΩMax. at DC 100mA
Dielectric Voltage : AC 500V for one minute
Operation Temperature : -40°C to + 105°C
15u" gold on contact matte tin on tail;
50u" Min Nickel plated

POLES	DIM E	POLES	DIM E
		21	50.80
2	2.54	22	53.34
3	5.08	23	55.88
4	7.62	24	58.42
5	10.16	25	60.96
6	12.70	26	63.50
7	15.24	27	66.04
8	17.78	28	68.58
9	20.32	29	71.12
10	22.86	30	73.66
11	25.40	31	76.20
12	27.94	32	78.74
13	30.48	33	81.28
14	33.02	34	83.82
15	35.56	35	86.36
16	38.10	36	88.90
17	40.64	37	91.44
18	43.18	38	93.98
19	45.72	39	96.52
20	48.26	40	99.06

DIM A	DIM B	DIM C
13.7	8	3.2

DO NOT SCALE DRAWING	TOLERANCES UNLESS OTHERWISE NOTED	INCH	MM	DR. <i>M.L.HUANG</i>	DATE JAN-09 '15
PROJECTION	LINEAR	$\frac{MM}{INCH}$	$\frac{00 \pm .01}{000 \pm .005}$ $\frac{0.0 \pm 0.25}{0.00 \pm 0.13}$ $\frac{0.000 \pm .002}{0.000 \pm 0.05}$	CK'D <i>M.CHANG</i>	JAN-09 '15
MM INCH	ANGLE $\pm 0^\circ 30'$	RADII	$\frac{+0.40}{-0.15}$	APP'D <i>W.J.YANG</i>	JAN-09 '15

METZ CONNECT

TITLE Pin header 2.54x2.54mm, straight type, single row

SCALE SIZE DWG.NO. REV. SHEET
PR202xxVBNN0096 5 1