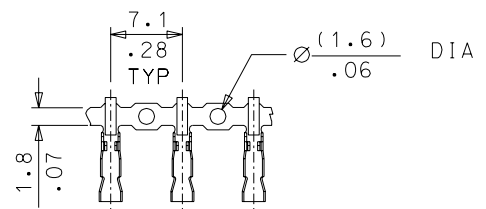
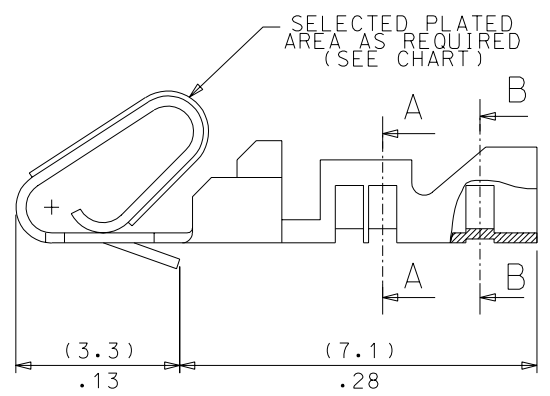
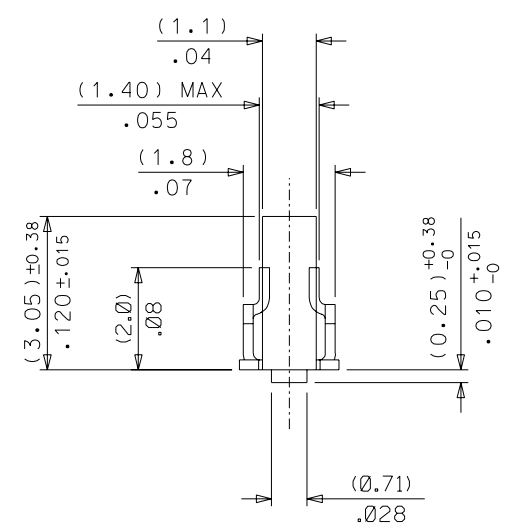
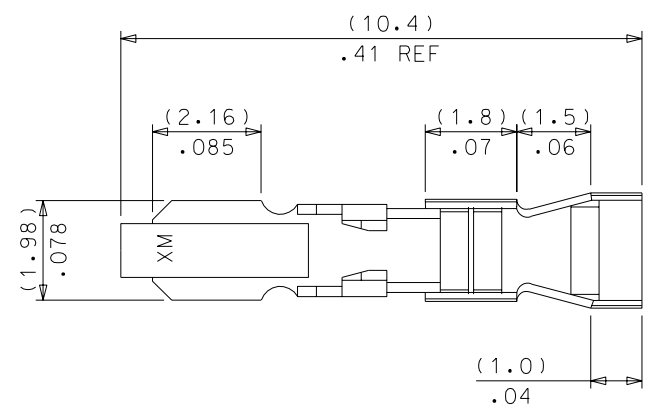


PART NO. SEE CHART
 DWG. NO. SD-8088-(****)*

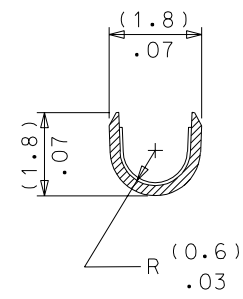


CARRIER VIEW
 SCALE 2:1

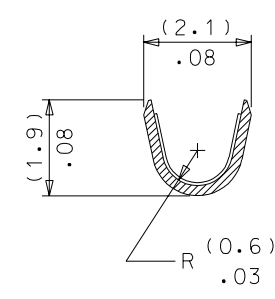


SELECTED PLATED AREA AS REQUIRED (SEE CHART)

PART No.	ENG No.	FORM	FINISH
97-00-0225	8088-(999)	CHAIN	UNPLATED
97-00-0226	8088-(999)L	LOOSE	
97-00-0227	8088-(102)	CHAIN	(102) POST PLATED .00020 MIN ELECTRO TIN OVER .0010 MIN COPPER PLATE
97-00-0228	8088-(102)L	LOOSE	
08-65-0105	8088-(555)	CHAIN	000025/.000015 GOLD IN CONTACT AREA OVER .0004/.00003 NICKEL OVERALL PER ENG STD SD-88-555.
08-65-0106	8088-(555)L	LOOSE	
N. T.	8088-(501)	CHAIN	.00030/.00020 GOLD OVER .00040/.00030 NICKEL PER ENG STD SD-88-501
N. T.	8088-(501)L	LOOSE	
08-52-0103	8088-(P902)	CHAIN	HOT TIN DIP (1.0-2.5um) .000040/.00010
08-52-0104	8088-(P902)L	LOOSE	



A-A



B-B

- NOTES:
- FOR 22-30 AWG WIRE; .062 DIA. MAX INSULATION
 - TERMINAL MUST MEET BEND SPECS ON ENG. STD. 219
 - THIS PART CONFORMS TO MOLEX PRODUCT SPEC.99020-0088
 - MATERIAL: (0.20)//.008 THICK PHOS BRONZE ALLOY!

FOR PREVIOUS DRAWING ISSUES SEE MRI.

CHANGED PLATING CODE EC NO. E2004-0036 DRWN: PSHEAHAN 03/07/24 CHK: / / / / APPR: / / / /	QUALITY SYMBOLS MAJOR = CRITICAL =	GENERAL TOLERANCES: (UNLESS SPECIFIED)		SCALE 10:1	DESIGN UNITS <input type="checkbox"/> mm <input type="checkbox"/> INCH	THIRD ANGLE PROJECTION <input checked="" type="checkbox"/> mm INCH <input type="checkbox"/> mm <input type="checkbox"/> ONLY	SHT	REV				
		4 PLACES ±0.25	3 PLACES ±0.25	2 PLACES ±0.25	1 PLACE ±0.51	ANGULAR: ± 1/2°	DRAWN BY & DATE T.MAHON 98/10/26		CHECKED BY & DATE M.GOONEY / /		APPROVED BY & DATE MWILHITE / /	
DRAFT WHERE APPLICABLE MUST REMAIN WITHIN DIMENSIONS		THIS DRAWING CONTAINS INFORMATION THAT IS PROPRIETARY TO MOLEX INCORPORATED AND SHOULD NOT BE USED WITHOUT WRITTEN PERMISSION.		CAD FILENAME S8088X1.DGN		MATERIAL NO. SEE CHART	DRAWING NO. SD-8088 -****	SHEET NO. 1 OF 1		SIZE B		