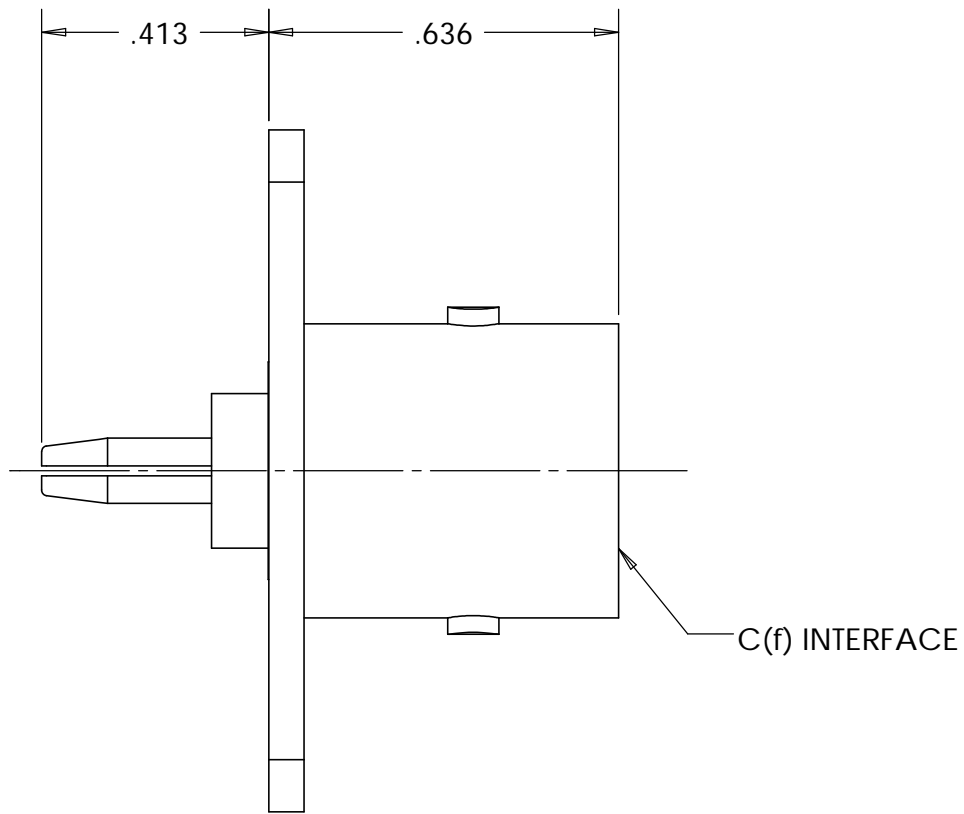
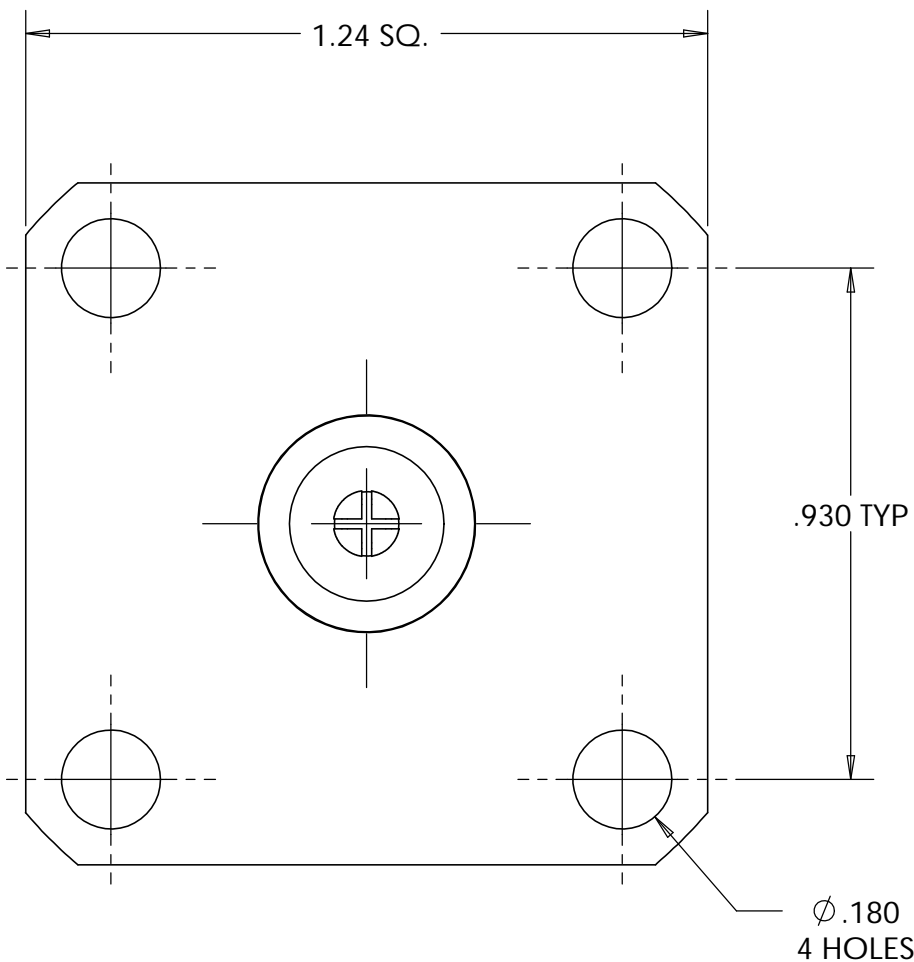
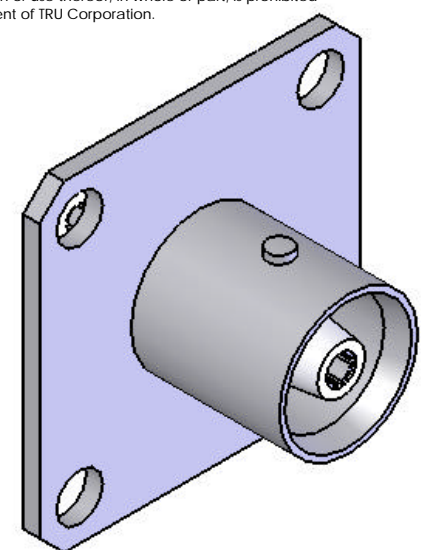



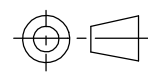
This document, including the design, configuration and mechanical features revealed herein are the sole, confidential and proprietary property of TRU Corporation. Reproduction or use thereof, in whole or part, is prohibited without the prior written consent of TRU Corporation.

REV.	DESCRIPTION	DATE	APPROVED
/	ORIGINAL ISSUE	01-05-98	RMK
A	CHANGED PER ECO 2992	10-19-06	DA



MATERIAL:
 BODY - BRASS
 CONTACT - BERYLLIUM COPPER
 INSULATOR - TEFLON

FINISH:
 BODY - NICKEL PLATED
 CONTACT - SILVER PLATED

MATERIAL	DO NOT SCALE DRAWING	DRAWN JDW	DATE 01-05-98	 TRU CORPORATION 245 LYNNFIELD STREET, PEABODY, MA 01960 <i>The Custom Interconnect Leader™</i>
	UNLESS OTHERWISE SPECIFIED: DIMENSIONS ARE IN INCHES	ENG APPR. RMK	DATE 01-05-98	
COMMENTS:	TOLERANCES: FRACTIONS: ±1/64 .XX : ±.01 .XXX: ±.005 ANGLES: ±1/2° MACHINED SURFACES: 63/√	MFG APPR.	DATE	TITLE: CONNECTOR, COAXIAL, RF C(f) to QC(m) ADAPTER, STRAIGHT
		OTHER APPR.	DATE	
surface area: sq inch	weight: 0.05 lbs	THIRD ANGLE PROJECTION 		SIZE B DWG. NO. TRU-4998 REV A
		CAGE CODE: 92180		SCALE: 3:1 SHEET 1 OF 1