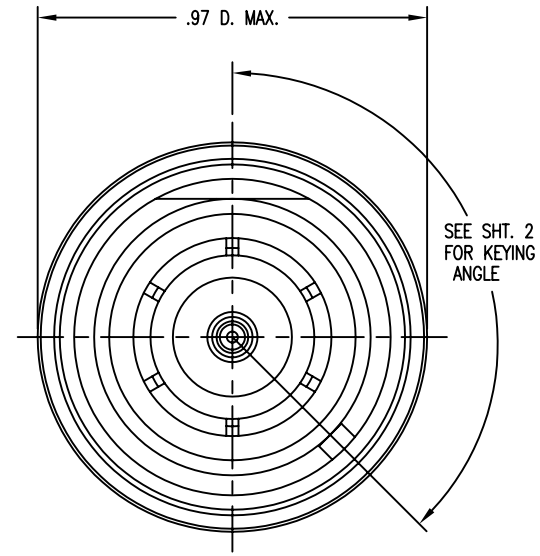
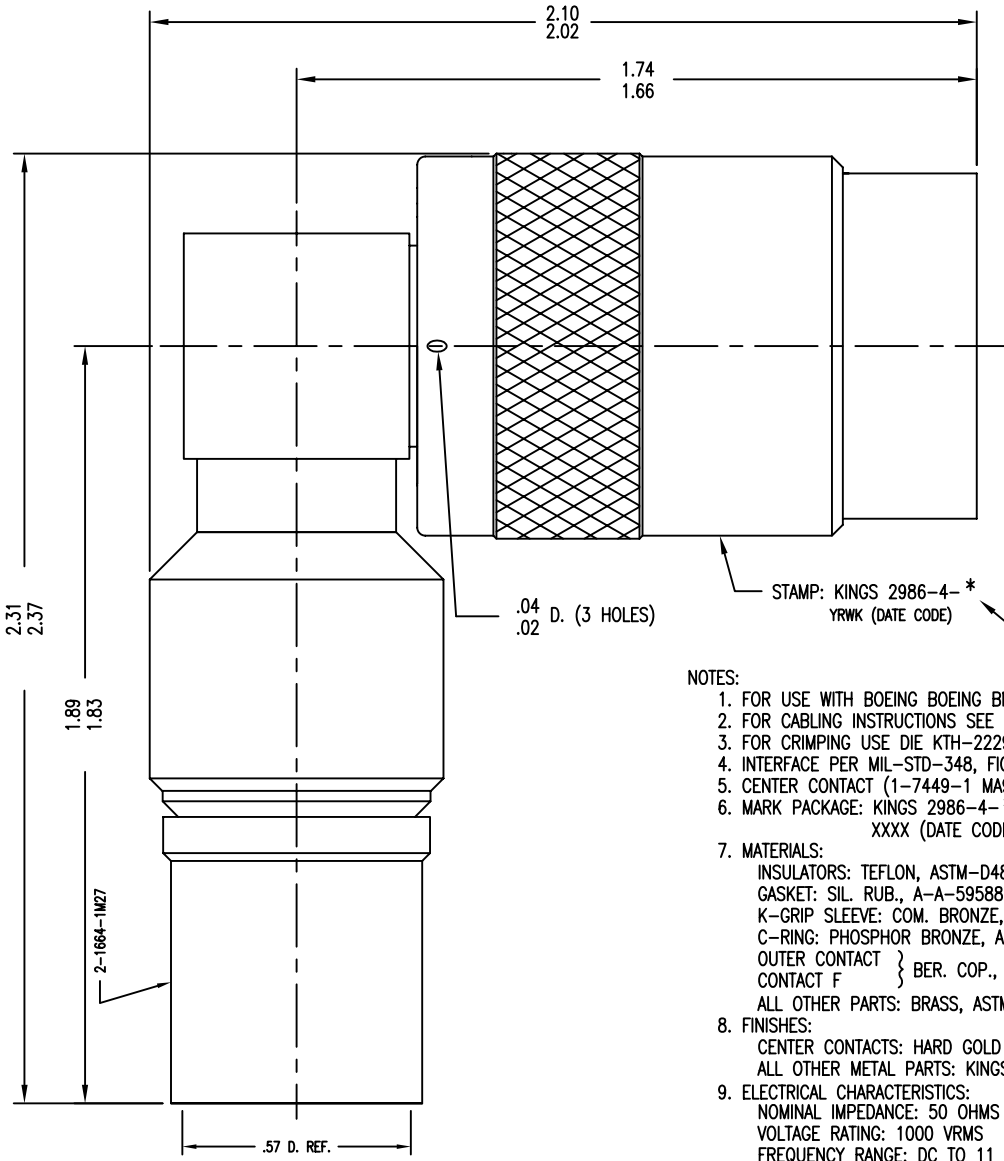


# GSD

2986-4-\* (SHEET 1 OF 2)

REVISIONS	
ISSUE	CHANGES
0	ER 39493 DCT 6/15/6



STAMP: KINGS 2986-4-\*  
YRWK (DATE CODE) SEE SHEET 2

- NOTES:
- FOR USE WITH BOEING BOEING BMS 13-65 TYPE OK, S280W503-6 & ADAMS RUSSELL FC48Z CABLES.
  - FOR CABLING INSTRUCTIONS SEE 3-546-2.
  - FOR CRIMPING USE DIE KTH-2229.
  - INTERFACE PER MIL-STD-348, FIG. 309-1. (EX. KEYING)
  - CENTER CONTACT (1-7449-1 MA9) SUPPLIED UNASSEMBLED.
  - MARK PACKAGE: KINGS 2986-4-\*  
XXXX (DATE CODE) SEE SHEET 2
  - MATERIALS:  
INSULATORS: TEFLON, ASTM-D4894  
GASKET: SIL. RUB., A-A-59588, CLASS1B  
K-GRIP SLEEVE: COM. BRONZE, ASTM-B-140  
C-RING: PHOSPHOR BRONZE, ASTM-B-103  
OUTER CONTACT } BER. COP., ASTM-B-196  
CONTACT F }  
ALL OTHER PARTS: BRASS, ASTM-B16
  - FINISHES:  
CENTER CONTACTS: HARD GOLD PLATE PER ASTM-B488.  
ALL OTHER METAL PARTS: KINGS TARNISH RESISTANT NICKEL FINISH (TR-5)
  - ELECTRICAL CHARACTERISTICS:  
NOMINAL IMPEDANCE: 50 OHMS  
VOLTAGE RATING: 1000 VRMS  
FREQUENCY RANGE: DC TO 11 GHz
  - WEIGHT, 4.12 OZ (116.8 G).

# GSD


SCALE 3:1	
APPROX SURFACE AREA	
USED ON	
REF: BOEING	
PLUG, ANGLE, SC (KEYED)	
DRAWN DCT	DATE 6/15/6
DESIGN DCT	DATE 6/15/6
APPR.	DATE

**KINGS**  
ELECTRONICS CO., INC.  
ROCK HILL, SOUTH CAROLINA 29730  
2986-4-\* (SHEET 1 OF 2)

KINGS PART NO.	KEYING ANGLE
2986-4-1	42°
2986-4-2	54°
2986-4-3	66°
2986-4-4	78°
2986-4-5	90°
2986-4-6	102°
2986-4-7	114°
2986-4-8	126°
2986-4-9	138°
2986-4-10	150°
2986-4-11	162°
2986-4-12	174°
2986-4-13	186°
2986-4-14	198°
2986-4-15	210°
2986-4-16	222°
2986-4-17	234°
2986-4-18	246°
2986-4-19	258°
2986-4-20	270°
2986-4-21	282°
2986-4-22	294°
2986-4-23	306°
2986-4-24	318°

GSD

GSD

2986-4-* (SHEET 2 OF 2)	
REVISIONS	
ISSUE	CHANGES
0	ER 39493 DCT 6/15/6
SCALE 1:1	
APPROX SURFACE AREA	
USED ON	
REF:	
PART NO. & ANGLE TABLE	
DRAWN DCT	DATE 6/15/6
DESIGN DCT	DATE 6/15/6
APPR.	DATE
 <b>KINGS</b> ELECTRONICS CO., INC. ROCK HILL, SOUTH CAROLINA, 29730	
2986-4-* (SHEET 2 OF 2)	