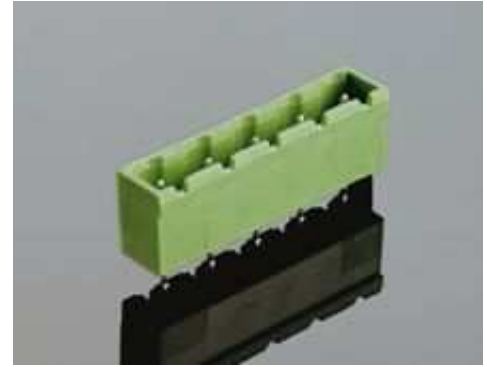


Typ ST18..

- 7,62 mm pin spacing
- 2 .. 16-poles single mold
- vertical header
- selective loading possible
- not to be connected or disconnected under electrical load
- closed end



	cULus	VDE
Rated voltage	300 V	400 V
Rated current	15 A	12 A
Rated impulse voltage		6 kV
Pollution degree		3
Dimensions	Spacing	7,62 mm
	PCB hole diameter	1,4 mm
Materials	Insulating material	PA
	Flammability class	UL 94 V-0
	Temperature range	-30 °C/+105 °C
	Contact pin	Cu
Colour	RAL 6018	green

Dimensions

